

ANJLL FOUR ARRIVAL (RNAV)

SW-3, 30 DEC 2021 to 27 JAN 2022

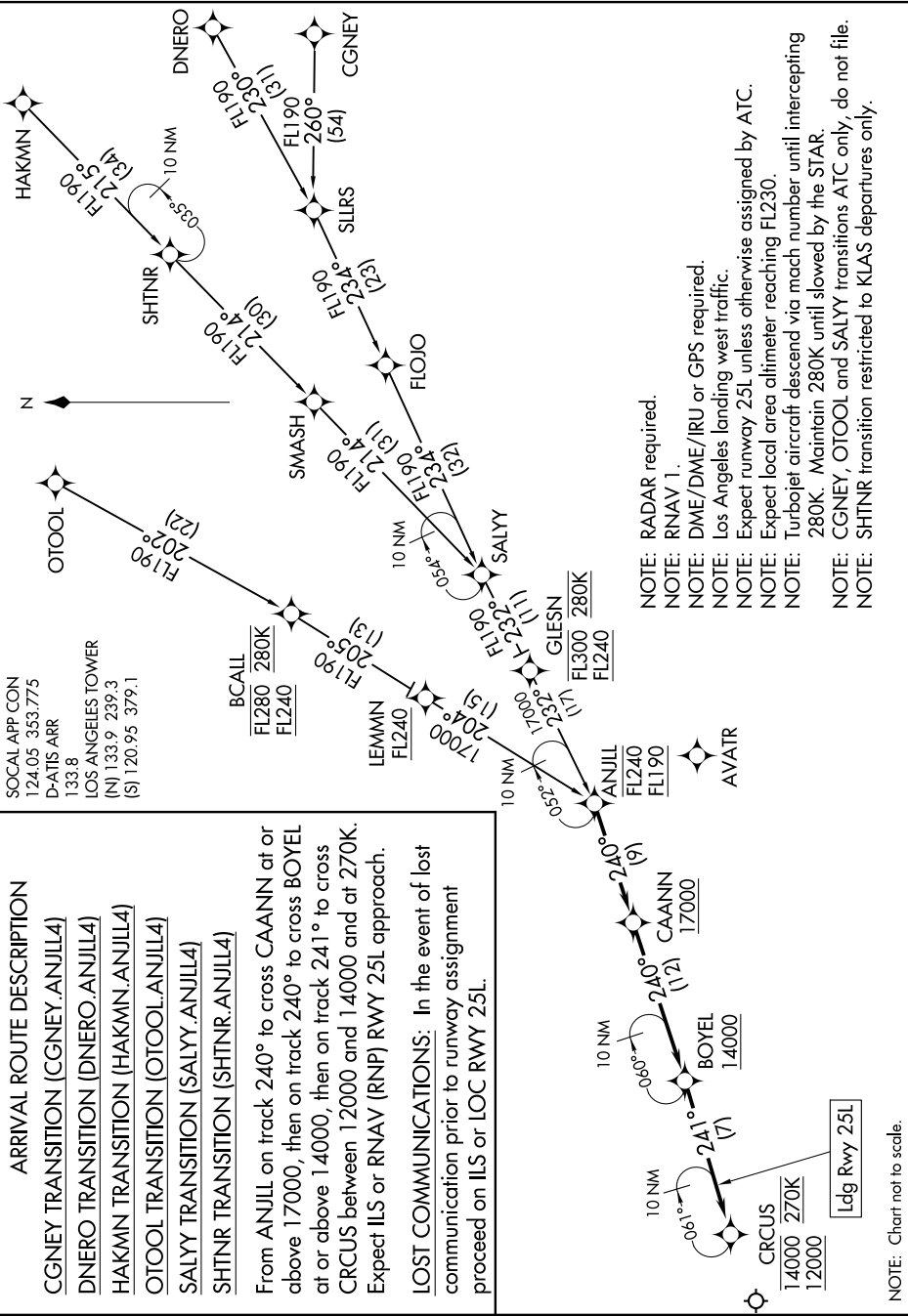
ARRIVAL ROUTE DESCRIPTION

- CGNEY TRANSITION (CGNEY.ANJLL4)
- DNERO TRANSITION (DNERO.ANJLL4)
- HAKMN TRANSITION (HAKMN.ANJLL4)
- OTOOL TRANSITION (OTOOL.ANJLL4)
- SALYY TRANSITION (SALYY.ANJLL4)
- SHTNR TRANSITION (SHTNR.ANJLL4)

From ANJLL on track 240° to cross CAANN at or above 17000, then on track 240° to cross BOYEL at or above 14000, then on track 241° to cross CRCUS between 12000 and 14000 and at 270K. Expect ILS or RNAV (RNP) RWY 25L approach.

LOST COMMUNICATIONS: In the event of lost communication prior to runway assignment proceed on ILS or LOC RWY 25L.

SOCAL APP CON
124.05 353.775
D-ATIS ARR
133.8
LOS ANGELES TOWER
(N) 133.9 239.3
(S) 120.95 379.1



NOTE: RADAR required.

NOTE: RNAV 1.

NOTE: DME/DME/IRU or GPS required.

NOTE: Los Angeles landing west traffic.

NOTE: Expect runway 25L unless otherwise assigned by ATC.

NOTE: Expect local area altimeter reaching FL230.

NOTE: Turbojet aircraft descend via mach number until intercepting 280K. Maintain 280K until slowed by the STAR.

NOTE: CGNEY, OTOOL and SALYY transitions ATC only, do not file.

NOTE: SHTNR transition restricted to KLAS departures only.

NOTE: Chart not to scale.

ANJLL FOUR ARRIVAL (RNAV)

SW-3, 30 DEC 2021 to 27 JAN 2022