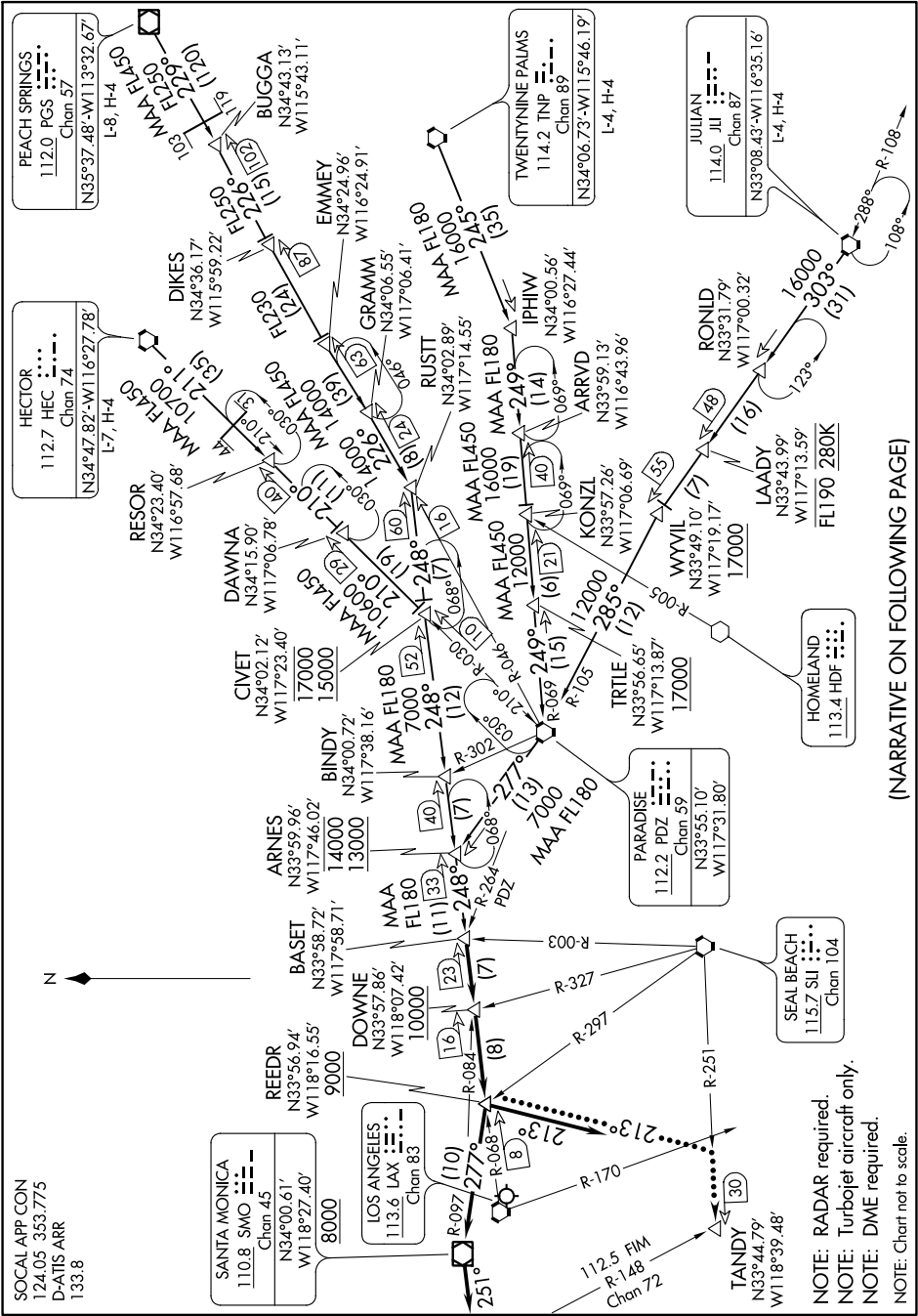


BASET FIVE ARRIVAL

AL-237 (FAA)

LOS ANGELES, CALIFORNIA

SW-3, 30 DEC 2021 to 27 JAN 2022



SOCAL APP CON
124.05 353.775
D-ATIS ARR
133.8

SANTA MONICA
110.8 SMO
Chan 45
N34°00.61'
W118°27.40'

REEDR
N33°56.94'
W118°16.55'

DOWNE
N33°57.86'
W118°07.42'

ARNES
N33°59.96'
W117°46.02'

BINDY
N34°00.72'
W117°38.16'

CIVET
N34°02.12'
W117°23.40'

DAWNA
N34°15.90'
W117°06.78'

RESOR
N34°23.40'
W116°57.68'

HECTOR
112.7 HEC
Chan 74
N34°47.82'-W116°27.78'

DIKENS
N34°36.17'
W115°59.22'

BUGGA
N34°43.13'
W115°43.11'

PEACH SPRINGS
112.0 PGS
Chan 57
N35°37.48'-W113°32.67'

LOS ANGELES
113.6 LAX
Chan 83

BASET
N33°58.72'
W117°58.71'

MAA
N34°00.72'
W117°38.16'

MAA FL180
7000
N34°00.72'
W117°38.16'

MAA FL450
15000
N34°02.12'
W117°23.40'

MAA FL1600
16000
N34°02.89'
W117°14.55'

MAA FL450
16000
N34°02.89'
W117°14.55'

MAA FL180
249°
N34°00.56'
W116°27.44'

MAA FL450
16000
N34°00.56'
W116°27.44'

MAA FL180
249°
N34°00.56'
W116°27.44'

MAA FL450
16000
N34°00.56'
W116°27.44'

TWENTYNINE PALMS
114.2 TNP
Chan 89
N34°06.73'-W115°46.19'

PARADISE
112.2 PDZ
Chan 59
N33°55.10'
W117°31.80'

TRITLE
N33°56.65'
W117°13.87'

KONZLI
N33°57.26'
W117°06.69'

ARRVD
N33°59.13'
W116°43.96'

WYVIL
N33°49.10'
W117°19.17'

LAADY
N33°43.99'
W117°13.59'

RONID
N33°31.79'
W117°00.32'

JULIAN
114.0 JUI
Chan 87
N33°08.43'-W116°35.16'

TANDY
N33°44.79'
W118°39.48'

SEAL BEACH
115.7 SLI
Chan 104

NOTE: RADAR required.
NOTE: Turbojet aircraft only.
NOTE: DME required.
NOTE: Chart not to scale.

(NARRATIVE ON FOLLOWING PAGE)

SW-3, 30 DEC 2021 to 27 JAN 2022

BASET FIVE ARRIVAL