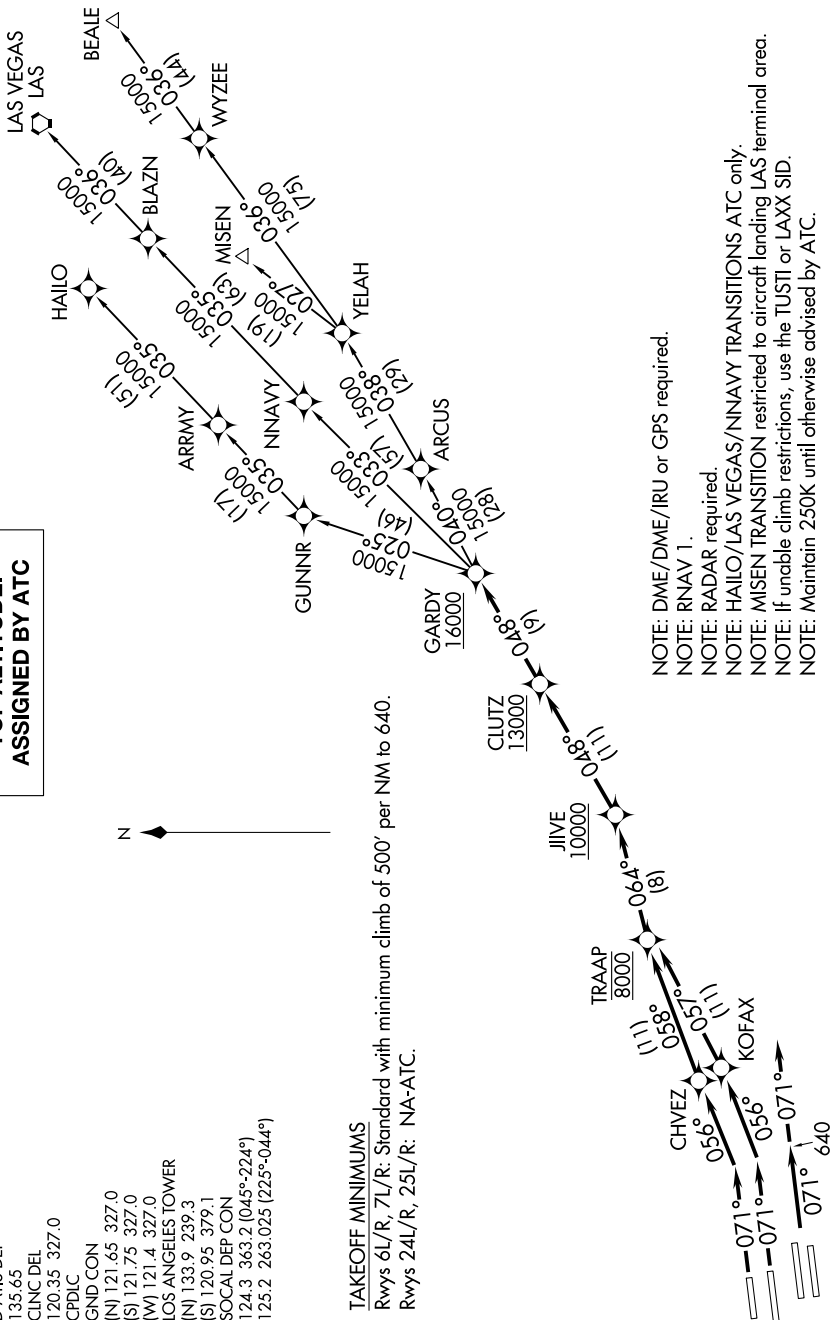


SW-3, 30 DEC 2021 to 27 JAN 2022

**TOP ALTITUDE:  
ASSIGNED BY ATC**

- D-ATIS DEP 135.65
- CLNC DEL 120.35 327.0
- CPDLC
- GND CON (N) 121.65 327.0
- (S) 121.75 327.0
- (W) 121.4 327.0
- LOS ANGELES TOWER (N) 133.9 239.3
- (S) 120.95 379.1
- SOCAL DEP CON 124.3 363.2 (045°-224°)
- 125.2 263.025 (225°-044°)

**TAKEOFF MINIMUMS**  
 Rwy 6L/R, 7L/R: Standard with minimum climb of 500' per NM to 640.  
 Rwy 24L/R, 25L/R: NA-ATC.



- NOTE: DME/DME/IRU or GPS required.
- NOTE: RNAV 1.
- NOTE: RADAR required
- NOTE: HAILO/LAS VEGAS/NNAV TRANSITIONS ATC only.
- NOTE: MISEN TRANSITION restricted to aircraft landing LAS terminal area.
- NOTE: If unable climb restrictions, use the TUSTI or LAXX SID.
- NOTE: Maintain 250K until otherwise advised by ATC.

(NARRATIVE ON FOLLOWING PAGE)

SW-3, 30 DEC 2021 to 27 JAN 2022

NOTE: Chart not to scale.