

LOC/DME I-OSS 108.5 Chan 22	APP CRS 251°	Rwy Idg 8926 TDZE 122 Apt Elev 128
---	------------------------	---

ILS RWY 24R (CAT II & III)

LOS ANGELES INTL (LAX)

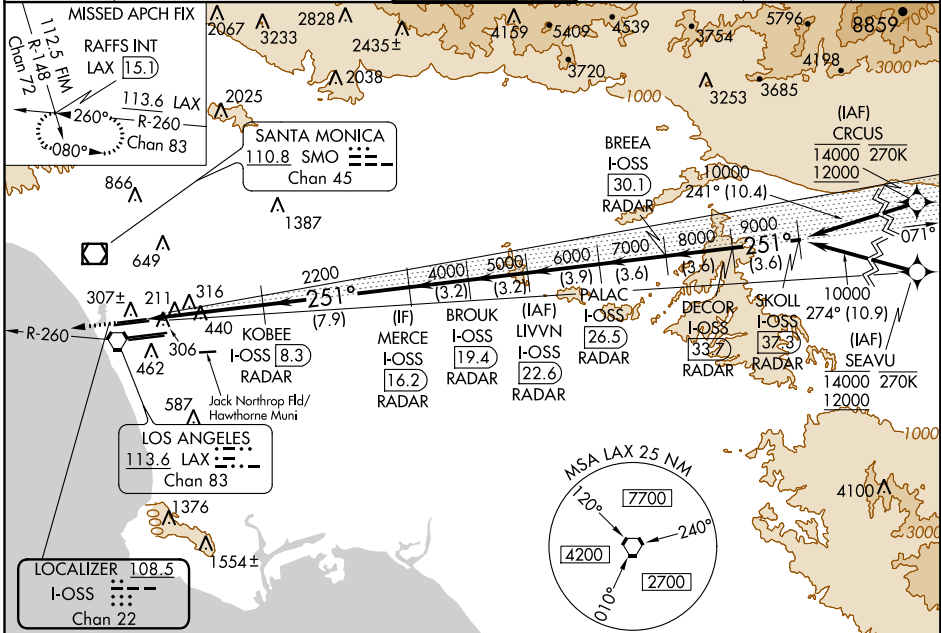
From CRCSU, SEAVU: RNAV 1-GPS required. DME or RADAR required.



Simultaneous approach authorized with HHR.
Simultaneous approach authorized.

MISSED APPROACH: Climb to 2000 on heading 251° and LAX VORTAC R-260 to RAFFS INT/LAX 15.1 DME and hold.

D-ATIS ARR 133.8 DEP 135.65	SOCAL APP CON 124.3 363.2 [APCH FM WEST] 124.5 235.975 [225°-044°]	124.9 269.0 [090°-224°] 128.5 360.7 [045°-089°]	LOS ANGELES TOWER N 133.9 239.3 S 120.95 379.1	GND CON N 121.65 327.0 S 121.75 327.0 W 121.4 327.0	CLNC DEL 120.35 327.0	CPDLC
---	--	--	--	---	---	-------



SW-3, 30 DEC 2021 to 27 JAN 2022

SW-3, 30 DEC 2021 to 27 JAN 2022

ELEV 128 TDZE 122	↑ 2000 hdg 251°	LAX R-260	RAFFS INT	VGSI and ILS glidepath not coincident (VGSI Angle 3.00/TCH 73).	DECOR I-OSS [33.7] RADAR	SKOLL I-OSS [37.3] RADAR				
		KOBE E I-OSS [8.3] RADAR	MERCE I-OSS [16.2] RADAR	BROOK I-OSS [19.4] RADAR	LIVV N I-OSS [22.6] RADAR	PALC I-OSS [26.3] RADAR	BREA I-OSS [30.1] RADAR	251° 10000		
		2200		4000	5000	6000	7000	8000	9000	10000
		6.4 NM	7.9 NM	3.2 NM	3.2 NM	3.9 NM	3.6 NM	3.6 NM	3.6 NM	3.6 NM
		CATEGORY	A	B	C	D				
		S-ILS 24R	CAT II RA 118/12 100 DA 222							
		S-ILS 24R	CAT III RVR 06							
CATEGORY II & III ILS - SPECIAL AIRCREW & AIRCRAFT CERTIFICATION REQUIRED										

TDZ/CL Rwy 6R, 7L, 24R, and 25L
HIRL all Rwy

LOS ANGELES, CALIFORNIA
Amdt 26B 20MAY21

33°57'N-118°24'W

LOS ANGELES INTL (LAX)
ILS RWY 24R (CAT II & III)