

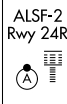
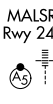
LOC/DME I-HQB 111.7 Chan 54	APP CRS 251°	Rwy Idg TDZE Apt Elev	24L 9483 123 128	24R 8926 122 128
---	------------------------	-----------------------------	--	--

ILS or LOC RWY 24L

LOS ANGELES INTL (LAX)

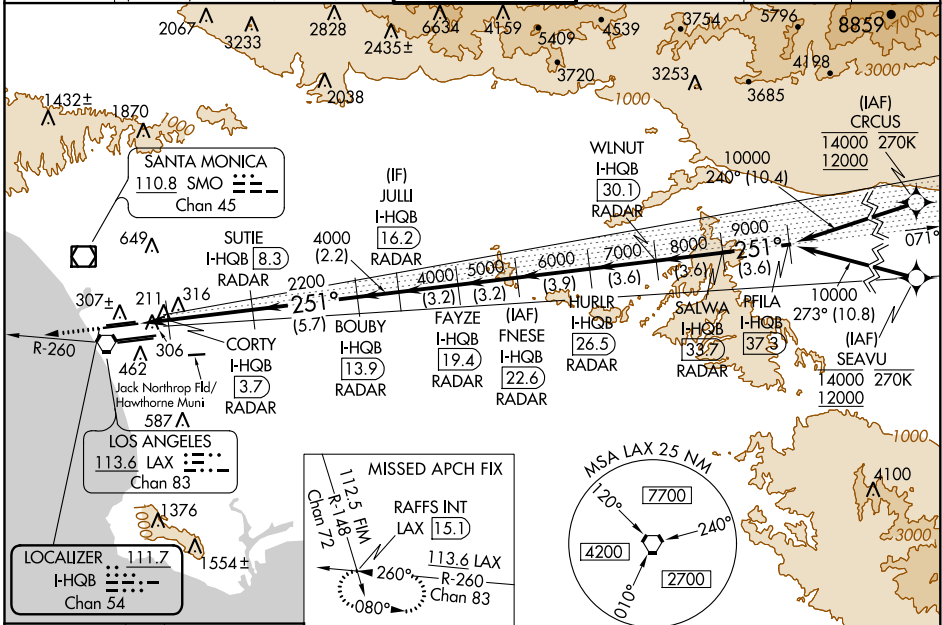
RNAV 1-GPS or RADAR required for procedure entry. DME or RADAR required.
From CRCSU: RNAV 1-GPS required. From SEAVU: RNAV 1-GPS required.

Simultaneous approach authorized with HHR. Inop table does not apply to Sidestep Rwy 24R Cat A and B. Simultaneous approach authorized. LOC procedure NA during simultaneous operations with HHR LOC RWY 25. For inop ALS, increase Sidestep 24R Cat C visibility to 1½SM. For inop ALS, increase S-LOC 24L Cat C/D visibility to RVR 5500. #RVR 1800 authorized with use of FD or AP or HUD to DA.



MISSED APPROACH:
Climb to 2000 on heading 251° and LAX VORTAC R-260 to RAFFS INT/LAX 15.1 DME and hold.

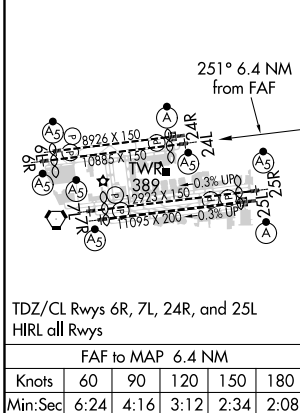
D-ATIS ARR 133.8 DEP 135.65	SOCAL APP CON 124.3 363.2 (APCH FM WEST) 124.5 235.975 (225°-044°)	124.9 269.0 (090°-224°) 128.5 360.7 (045°-089°)	LOS ANGELES TOWER N 133.9 239.3 S 120.95 379.1	GND CON N 121.65 327.0 S 121.75 327.0 W 121.4 327.0	CLNC DEL 120.35 327.0	CPDLC
---	--	--	---	--	--	-------



SW-3, 30 DEC 2021 to 27 JAN 2022

SW-3, 30 DEC 2021 to 27 JAN 2022

ELEV 128	D	TDZE 24L 123	TDZE 24R 122
----------	----------	--------------	--------------



2000	LAX R-260	RAFFS INT	VGSI and ILS glidepath not coincident (VGSI Angle 3.00/TCH 79).				SALWA I-HQB	PFILA I-HQB	
hdg 251°						33.7	37.3		
*LOC only.	CORTY I-HQB	SUTIE I-HQB	BOUBY I-HQB	JULI I-HQB	FAYZE I-HQB	FNESE I-HQB	HURLR I-HQB	WLNUT I-HQB	RAFFS INT
	3.7	8.3	13.9	16.2	19.4	22.6	26.5	30.1	15.1
	RADAR	RADAR	RADAR	RADAR	RADAR	RADAR	RADAR	RADAR	RADAR
	2200	2200	4000	4000	5000	6000	7000	8000	9000
	1.9	2.9	4.6	5.7	6.2	6.2	6.2	6.2	6.2
CATEGORY	A		B		C		D		
S-ILS 24L#	323/24				200 (200-½)				
S-LOC 24L	500/24		377 (400-½)			500/35		377 (400-¾)	
SIDESTEP 24R	500/55				378 (400-1)			500-1½ 378 (400-1½)	