

| | | |
|---|------------------------|---|
| LOC/DME I-OSS 108.5 Chan 22 | APP CRS 251° | Rwy Idg 24R 8926 24L 9483 TDZE 122 123 Apt Elev 128 128 |
|---|------------------------|---|

ILS or LOC RWY 24R

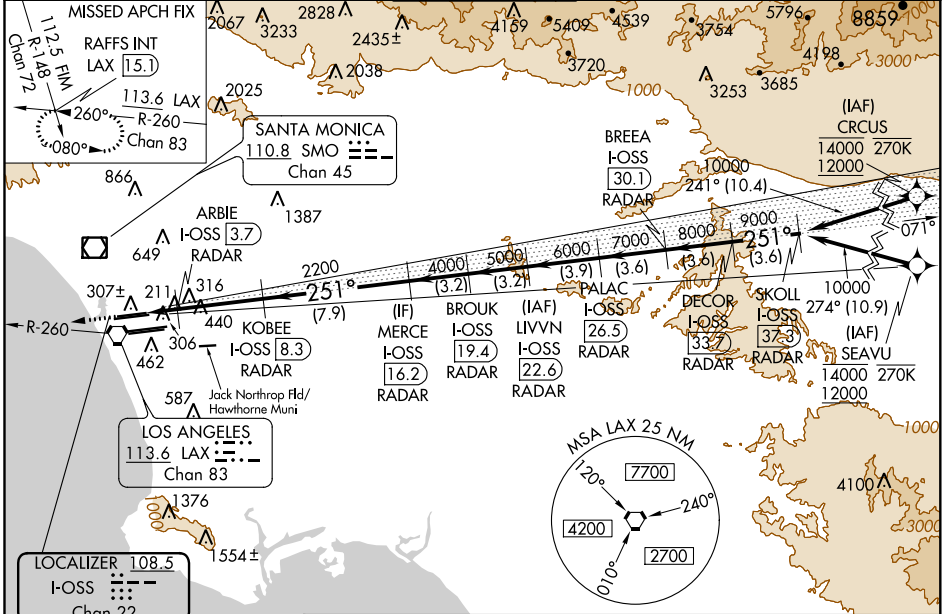
LOS ANGELES INTL (LAX)

From CRJUS, SEAVU: RNAV 1-GPS required. DME or RADAR required.

⚠ Simultaneous approach authorized with HHR. LOC procedure NA during simultaneous operations with HHR LOC RWY 25. Simultaneous approach authorized. For inop ALS, increase S-LOC 24R Cat C/D visibility to RVR 5500.

| | | |
|-------------------|-------------------|---|
| ALS-2 Rwy 24R | MALSR Rwy 24L | MISSED APPROACH: Climb to 2000 on heading 251° and LAX VORTAC R-260 to RAFFS INT/LAX 15.1 DME and hold. |
|-------------------|-------------------|---|

| | | | | | | |
|---|--|--|--|---|---|-------|
| D-ATIS ARR 133.8 DEP 135.65 | SOCAL APP CON 124.3 363.2 (APCH FM WEST) 124.5 235.975 (225°-044°) | 124.9 269.0 (090°-224°) 128.5 360.7 (045°-089°) | LOS ANGELES TOWER N 133.9 239.3 S 120.95 379.1 | GND CON N 121.65 327.0 S 121.75 327.0 W 121.4 327.0 | CLNC DEL 120.35 327.0 | CPDLC |
|---|--|--|--|---|---|-------|



SW-3, 30 DEC 2021 to 27 JAN 2022

SW-3, 30 DEC 2021 to 27 JAN 2022

