

LOC/DME I-FCFN 111.1 Chan 48	APP CRS 251°	Rwy Idg TDZE Apt Elev	25R 11134 104 128	25L 11095 104 128
--	------------------------	-----------------------------	---	---

ILS or LOC RWY 25R

LOS ANGELES INTL (LAX)

From CRCUS, SEAVU, TRNDO, CLPUR: RNAV 1-GPS required. DME or RADAR required.

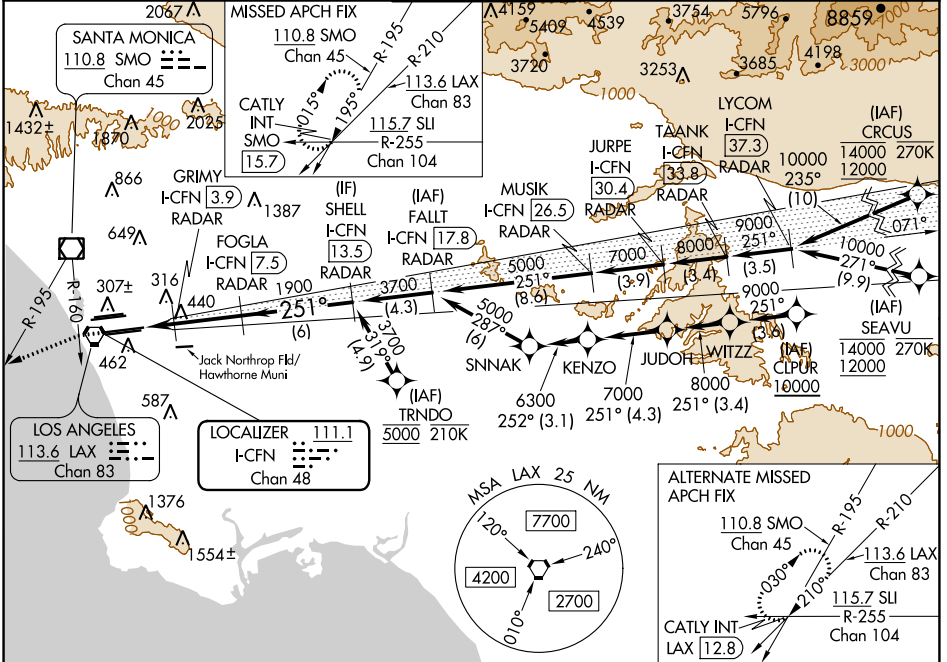
MALSR Rwy 25R

ALSF-2 Rwy 25L

MISSED APPROACH: Climb to 2000 on heading 251° until crossing SMO R-160 then left turn on heading 236° and SMO VOR/DME R-195 to CATLY INT/SMO 15.7 DME and hold.

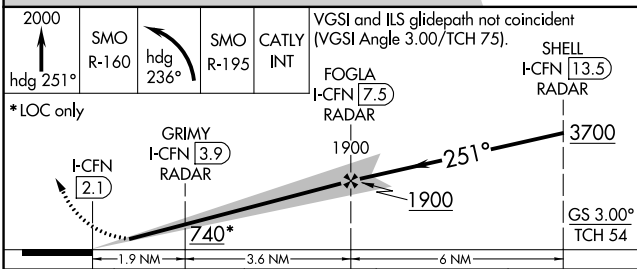
Simultaneous approach authorized. Simultaneous approach authorized with HHR. For inop ALS increase Sidestep 25L Cat C visibility to 1½ SM. #RVR 1800 authorized with use of FD or AP or HUD to DA.

D-ATIS ARR 133.8 DEP 135.65	SOCAL APP CON 124.3 363.2 (APCH FM WEST) 124.9 269.0 (090°-224°) 124.5 235.975 (225°-044°) 128.5 360.7 (045°-089°)	LOS ANGELES TOWER N 133.9 239.3 S 120.95 379.1	GND CON N 121.65 327.0 S 121.75 327.0 W 121.4 327.0	CLNC DEL 120.35 327.0	CPDLC
---	--	--	---	---	-------

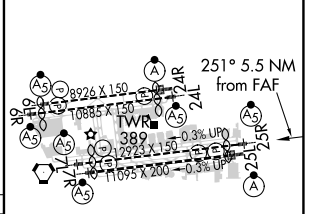


SW-3, 30 DEC 2021 to 27 JAN 2022

SW-3, 30 DEC 2021 to 27 JAN 2022



ELEV 128	D TDZE 25R 104	TDZE 25L 104
----------	-----------------------	--------------



CATEGORY	A	B	C	D
S-ILS 25R#	304/24 200 (200-½)			
S-LOC 25R	700/24 596 (600-½)	700-1¼ 596 (600-1¼)		
SIDESTEP 25L	700/55 596 (600-1)	700-1¼ 596 (600-1¼)	700-1½ 596 (600-1½)	

TDZ/CL Rwy's 6R, 7L, 24R, and 25L	HRL all Rwy's				
FAF to MAP 5.5 NM					
Knots	60	90	120	150	180
Min:Sec	5:30	3:40	2:45	2:12	1:50