

PERCH THREE DEPARTURE

AL-237 (FAA)

LOS ANGELES INTL (LAX)
LOS ANGELES, CALIFORNIA

D-ATIS DEP
135.65
CLNC DEL
120.35 327.0
CPDLC
GND CON
(N) 121.65 327.0
(S) 121.75 327.0
(W) 121.4 327.0
LOS ANGELES TOWER
(N) 133.9 239.3
(S) 120.95 379.1
SOCAL DEP CON
124.3 363.2 (045°-224°)
125.2 263.025 (225°-044°)

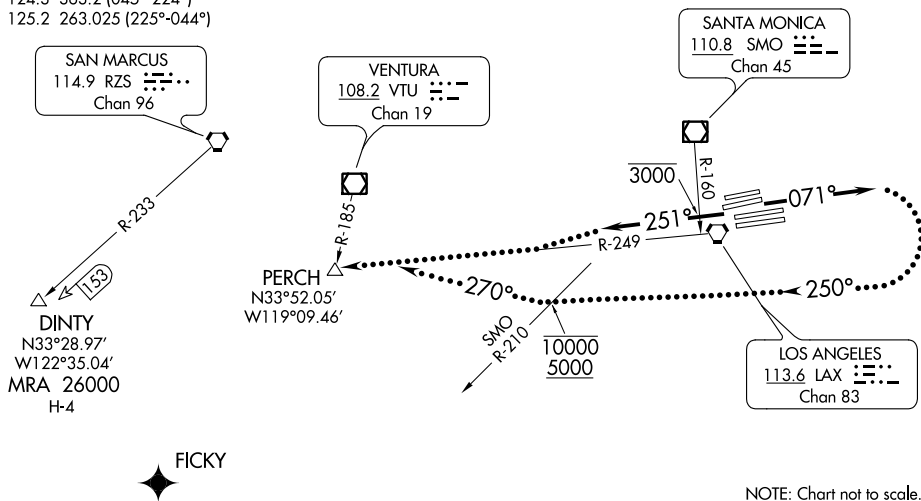
TAKEOFF MINIMUMS

Rwys 6L/R, 7L/R, 24L/R, 25L/R: Standard.

**TOP ALTITUDE:
ASSIGNED BY ATC**

NOTE: RADAR and DME required.

NOTE: Route depicted is a LOST COMMUNICATION PROCEDURE only.



SW-3, 30 DEC 2021 to 27 JAN 2022

SW-3, 30 DEC 2021 to 27 JAN 2022

DEPARTURE ROUTE DESCRIPTION

TAKEOFF RUNWAYS 6L/R, 7L/R: Climb on heading 071° for RADAR vectors to DINTY or FICKY, thence. . . .

TAKEOFF RUNWAYS 24L/R, 25L/R: Climb on heading 251° to cross SMO R-160 at or below 3000, then on RADAR vectors to DINTY or FICKY, thence. . . .

. . . .on (assigned route). All aircraft expect further clearance to filed altitude 5 minutes after departure.

LOST COMMUNICATIONS:

TAKEOFF RUNWAYS 6L/R, 7L/R: If not in contact with Departure Control within 3 minutes after departure, turn right heading 250°, cross SMO R-210 at or above 5000 and at or below 10000. After leaving 10000, turn right heading 270° to intercept and proceed on LAX R-249 to PERCH INT. Climb to FL230 or filed altitude whichever is lower. Aircraft filing FL240 or above climb to filed altitude 10 minutes after departure.

TAKEOFF RUNWAYS 24L/R, 25L/R: If not in contact with Departure Control within 5 minutes after departure, proceed to PERCH INT on LAX R-249. Climb to FL230 or filed altitude whichever is lower. Aircraft filing FL240 or above climb to filed altitude 10 minutes after departure.

PERCH THREE DEPARTURE

(PRCH3.LAX) 17AUG17

LOS ANGELES, CALIFORNIA
LOS ANGELES INTL (LAX)