


RNAV (RNP) Z RWY 24L

LOS ANGELES INTL (LAX)

APP CRS	Rwy Idg	9483
251°	TDZE	123
	Apt Elev	128

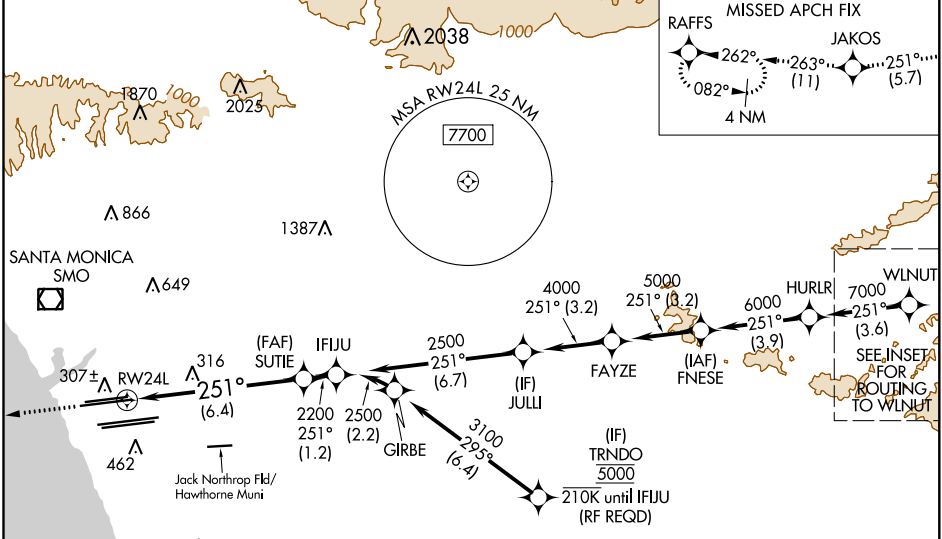
RNP AR APCH.

Simultaneous approach authorized. Simultaneous approach authorized with HHR. For uncompensated Baro-VNAV systems, procedure NA below 5°C or above 54°C. For inop ALS, increase RNP 0.15 all Cats visibility to 1 3/8 SM.

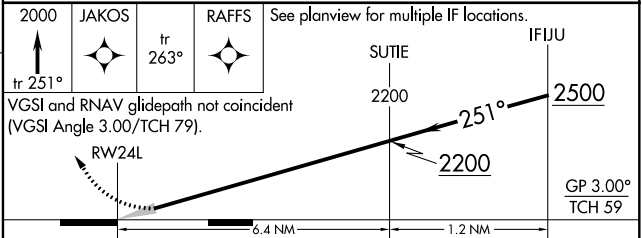
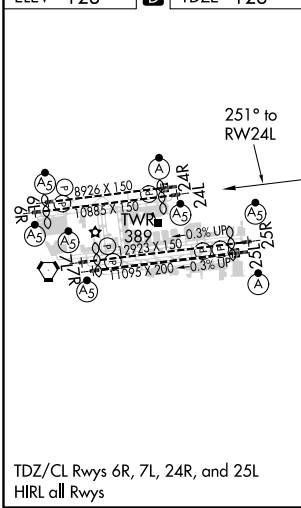
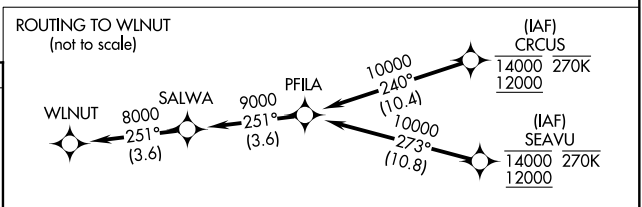
MALSR 

MISSED APPROACH: Climb to 2000 on track 251° to JAKOS and track 263° to RAFFS and hold.

D-ATIS	SOCAL APP CON	LOS ANGELES TOWER	GND CON	CLNC DEL	CPDLC
ARR 133.8	124.3 363.2 <small>(APCH FM WEST)</small>	124.9 269.0 <small>(090°-224°)</small>	N 121.65 327.0 S 121.75 327.0 W 121.4 327.0	120.35 327.0	
DEP 135.65	124.5 235.975 <small>(225°-044°)</small>	128.5 360.7 <small>(045°-089°)</small>			



ELEV 128	D	TDZE 123
----------	----------	----------



CATEGORY	A	B	C	D
RNP 0.15 DA		545/35	422 (500-5%)	
RNP 0.30 DA		592/45	469 (500-7%)	

AUTHORIZATION REQUIRED

SW-3, 30 DEC 2021 to 27 JAN 2022

SW-3, 30 DEC 2021 to 27 JAN 2022