

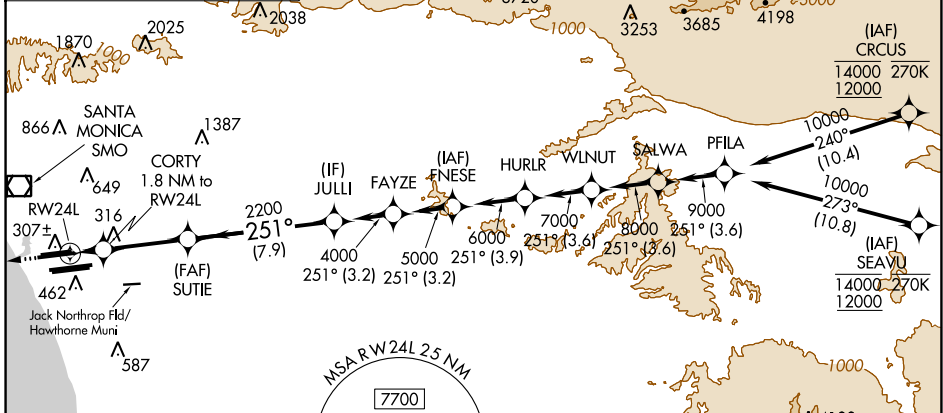
WAAS CH <b>56407</b> <b>W24B</b>	APP CRS <b>251°</b>	Rwy Idg TDZE Apt Elev	<b>9483</b> <b>123</b> <b>128</b>
--	------------------------	-----------------------------	---

# RNAV (GPS) Y RWY 24L

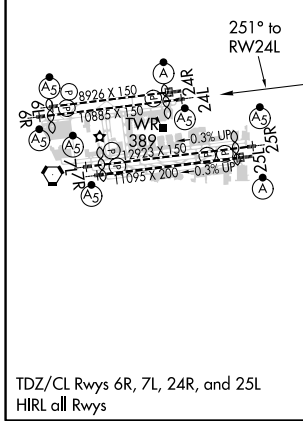
LOS ANGELES INTL (LAX)

RNP APCH.		MALSR	MISSED APPROACH: Climb to 2000 direct JAKOS and on track 263° to RAFFS and hold.
<p>Simultaneous approach authorized. LNAV procedure NA during simultaneous operations. Use of FD or AP providing RNAV track guidance required during simultaneous operations. Simultaneous approach authorized with HHR. For uncompensated Baro-VNAV systems, LNAV/VNAV NA below 5°C or above 54°C. For inop ALS, increase LNAV/VNAV all Cats visibility to 1½ SM. #RVR 1800 authorized with use of FD or AP or HUD to DA.</p>			

D-ATIS ARR <b>133.8</b> DEP <b>135.65</b>	SOCAL APP CON <b>124.3 363.2</b> (APCH FM WEST) <b>124.5 235.975</b> (225°-044°)	<b>124.9 269.0</b> (090°-224°) <b>128.5 360.7</b> (045°-089°)	LOS ANGELES TOWER <b>N 133.9 239.3</b> <b>S 120.95 379.1</b>	GND CON <b>N 121.65 327.0</b> <b>S 121.75 327.0</b> <b>W 121.4 327.0</b>	CLNC DEL <b>120.35</b> <b>327.0</b>	CPDLC
---	--	--	--	---	---	-------



ELEV 128	<b>D</b>	TDZE 123
----------	----------	----------



2000	JAKOS	tr 263°	RAFFS	VGSI and RNAV glidepath not coincident (VGSI Angle 3.00/TCH 79).
*LNAV only				
	CORTY 1.8 NM to RW24L		SUTIE 2200	JULI 4000
		740*	2200	GP 3.00° TCH 59
	1.8 NM	4.6 NM	7.9 NM	

CATEGORY	A	B	C	D
LPV DA#		323/24	200 (200-½)	
LNAV/VNAV DA		608/50	485 (500-1)	
LNAV MDA	660/24	537 (600-½)	660/55	537 (600-1)

SW-3, 30 DEC 2021 to 27 JAN 2022

SW-3, 30 DEC 2021 to 27 JAN 2022