

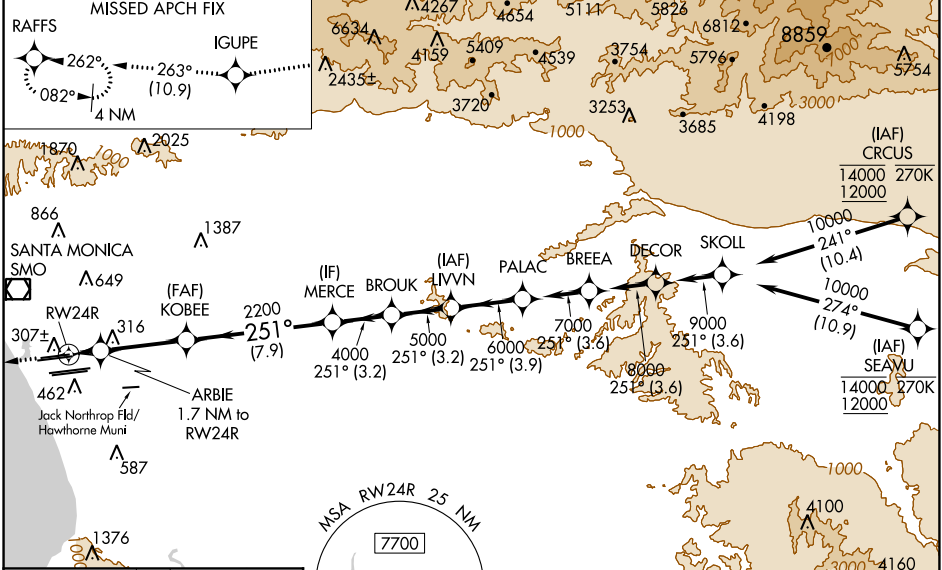
RNAV (GPS) Y RWY 24R

LOS ANGELES INTL (LAX)

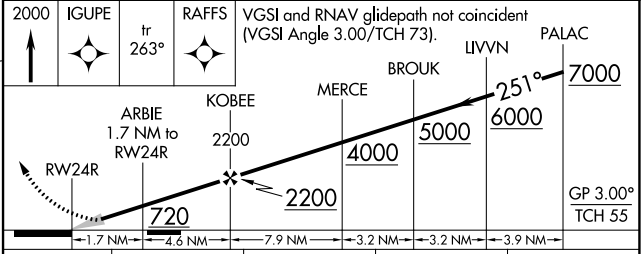
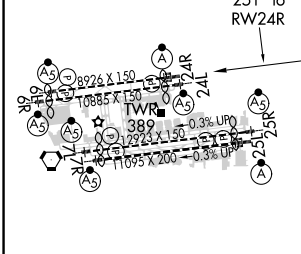
WAAS CH 69307 W24A	APP CRS 251°	Rwy Idg TDZE Apt Elev	8926 122 128
--	------------------------	-----------------------------	---

RNP APCH.	<p>▼ LNAV procedure NA during simultaneous operations. Use of FD or AP required during simultaneous operations. Simultaneous approach authorized with HHR. For uncompensated Baro-VNAV systems, LNAV/VNAV NA below 6°C or above 54°C. Simultaneous approach authorized. For inop ALS, increase LNAV/VNAV all Cats visibility to 1½ SM, and LNAV Cat C/D visibility to 1⅓ SM.</p>	<p>ALSIF-2</p> <p>MISSED APPROACH: Climb to 2000 direct IGUPE and track 263° to RAFFS and hold.</p>
-----------	--	---

D-ATIS ARR 133.8 DEP 135.65	SOCAL APP CON 124.3 363.2 <small>(APCH FM WEST)</small> 124.5 235.975 <small>(225°-044°)</small>	124.9 269.0 <small>(090°-224°)</small> 128.5 360.7 <small>(045°-089°)</small>	LOS ANGELES TOWER N 133.9 239.3 S 120.95 379.1	GND CON N 121.65 327.0 S 121.75 327.0 W 121.4 327.0	CLNC DEL 120.35 327.0	CPDLC
---	--	--	--	---	---	-------



ELEV 128	D	TDZE 122
-----------------	----------	-----------------



TDZ/CL Rwy 6R, 7L, 24R, and 25L HIRL all Rwys	<table border="1"> <tr> <th>CATEGORY</th> <th>A</th> <th>B</th> <th>C</th> <th>D</th> </tr> <tr> <td>LPV DA</td> <td></td> <td>322/18</td> <td>200 (200-½)</td> <td></td> </tr> <tr> <td>LNAV/VNAV DA</td> <td></td> <td>589/60</td> <td>467 (500-1¼)</td> <td></td> </tr> <tr> <td>LNAV MDA</td> <td>640/24</td> <td>518 (600-½)</td> <td>640/55</td> <td>518 (600-1)</td> </tr> </table>	CATEGORY	A	B	C	D	LPV DA		322/18	200 (200-½)		LNAV/VNAV DA		589/60	467 (500-1¼)		LNAV MDA	640/24	518 (600-½)	640/55	518 (600-1)
CATEGORY	A	B	C	D																	
LPV DA		322/18	200 (200-½)																		
LNAV/VNAV DA		589/60	467 (500-1¼)																		
LNAV MDA	640/24	518 (600-½)	640/55	518 (600-1)																	

SW-3, 30 DEC 2021 to 27 JAN 2022

SW-3, 30 DEC 2021 to 27 JAN 2022