

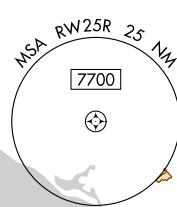
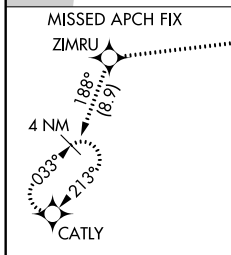
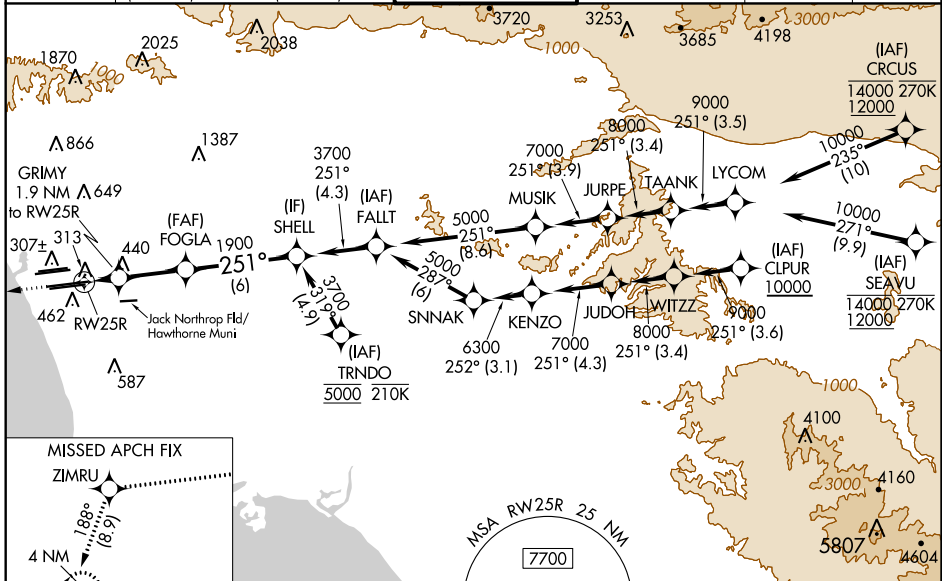
WAAS CH <b>49007</b> <b>W25B</b>	APP CRS <b>251°</b>	Rwy Idg <b>11134</b> TDZE <b>104</b> Apt Elev <b>128</b>
--	------------------------	--

# RNAV (GPS) Y RWY 25R

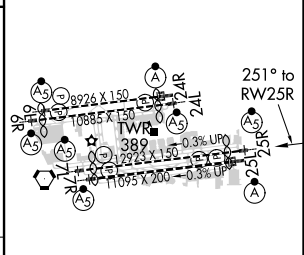
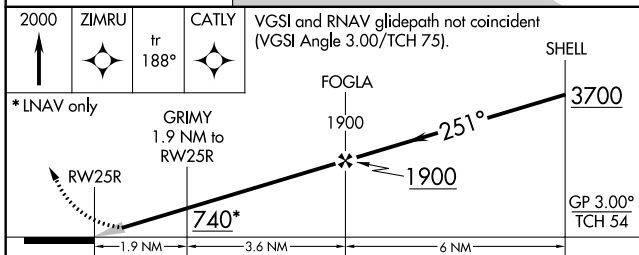
LOS ANGELES INTL (LAX)

RNP APCH.	<p>▼ For uncompensated Baro-VNAV systems, LNAV/VNAV NA below 5°C or above 54°C. Simultaneous approach authorized. Simultaneous approach authorized with HHR. LNAV procedure NA during simultaneous operations. Use of FD or AP required during simultaneous operations. # RVR 1800 authorized with use of FD or AP or HUD to DA.</p>	<p>MALSR</p>	<p>MISSED APPROACH: Climb to 2000 direct ZIMRU and track 188° to CATLY and hold.</p>
-----------	--	--------------	--

D-ATIS ARR <b>133.8</b> DEP <b>135.65</b>	SOCAL APP CON (APCH FM WEST) <b>124.3 363.2</b> (225°-044°)	LOS ANGELES TOWER <b>124.9 269.0</b> (090°-224°) <b>N 133.9 239.3</b> <b>S 120.95 379.1</b>	GND CON <b>N 121.65 327.0</b> <b>S 121.75 327.0</b> <b>W 121.4 327.0</b>	CLNC DEL <b>120.35</b> <b>327.0</b>	CPDLC
---	--	---	---	---	-------



ELEV 128	<b>D</b> TDZE 104
----------	-------------------



CATEGORY	A	B	C	D
LPV DA#		304/24	200 (200-1/2)	
LNAV/VNAV DA		578/60	474 (500-1/4)	
LNAV MDA	640/24	536 (600-1/2)	640/55	536 (600-1)

TDZ/CL Rwy 6R, 7L, 24R, and 25L  
HIRL all Rwy's

SW-3, 30 DEC 2021 to 27 JAN 2022

SW-3, 30 DEC 2021 to 27 JAN 2022