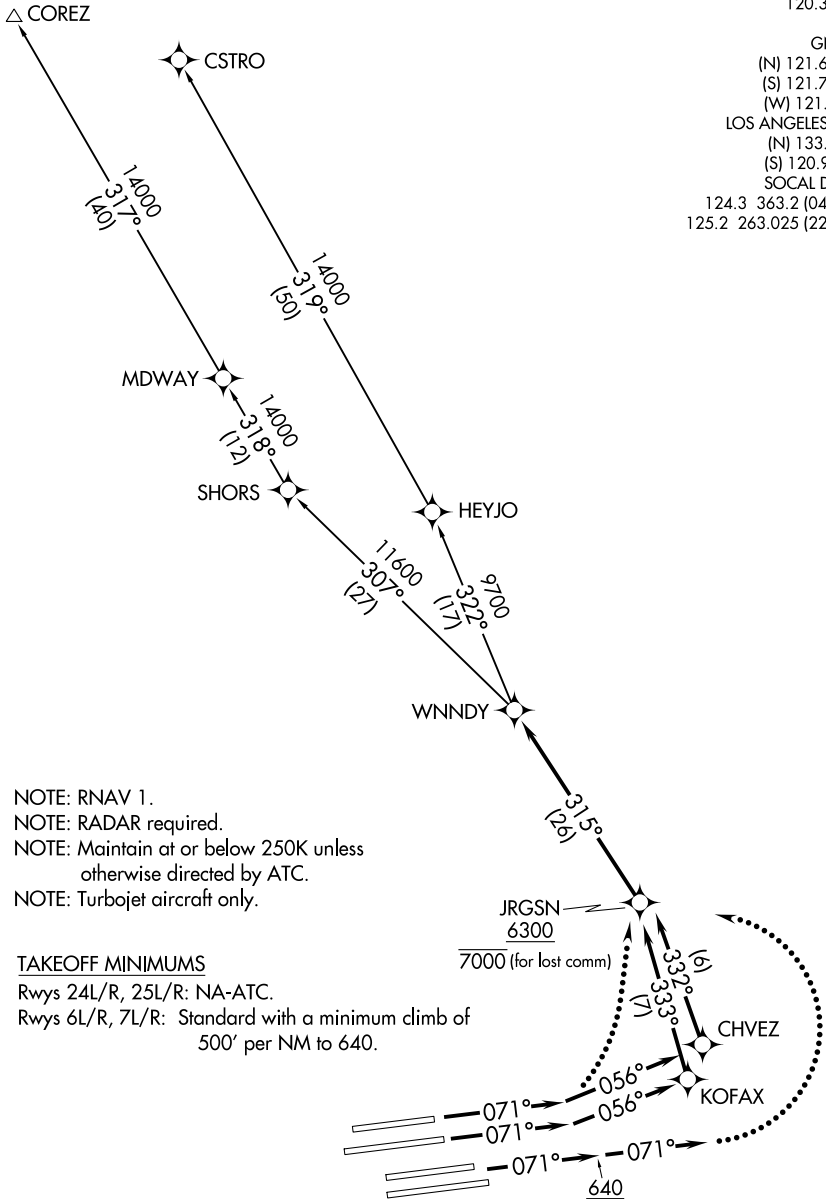


**TOP ALTITUDE:  
FL230**

D-ATIS DEP 135.65  
 CLNC DEL 120.35 327.0  
 CPDLC  
 GND CON (N) 121.65 327.0  
 (S) 121.75 327.0  
 (W) 121.4 327.0  
 LOS ANGELES TOWER (N) 133.9 239.3  
 (S) 120.95 379.1  
 SOCAL DEP CON 124.3 363.2 (045°-224°)  
 125.2 263.025 (225°-044°)



NOTE: RNAV 1.  
 NOTE: RADAR required.  
 NOTE: Maintain at or below 250K unless otherwise directed by ATC.  
 NOTE: Turbojet aircraft only.

TAKEOFF MINIMUMS

Rwys 24L/R, 25L/R: NA-ATC.  
 Rwys 6L/R, 7L/R: Standard with a minimum climb of 500' per NM to 640.

JRGSN  
 6300  
 7000 (for lost comm)

(NARRATIVE ON FOLLOWING PAGE)

NOTE: Chart not to scale.