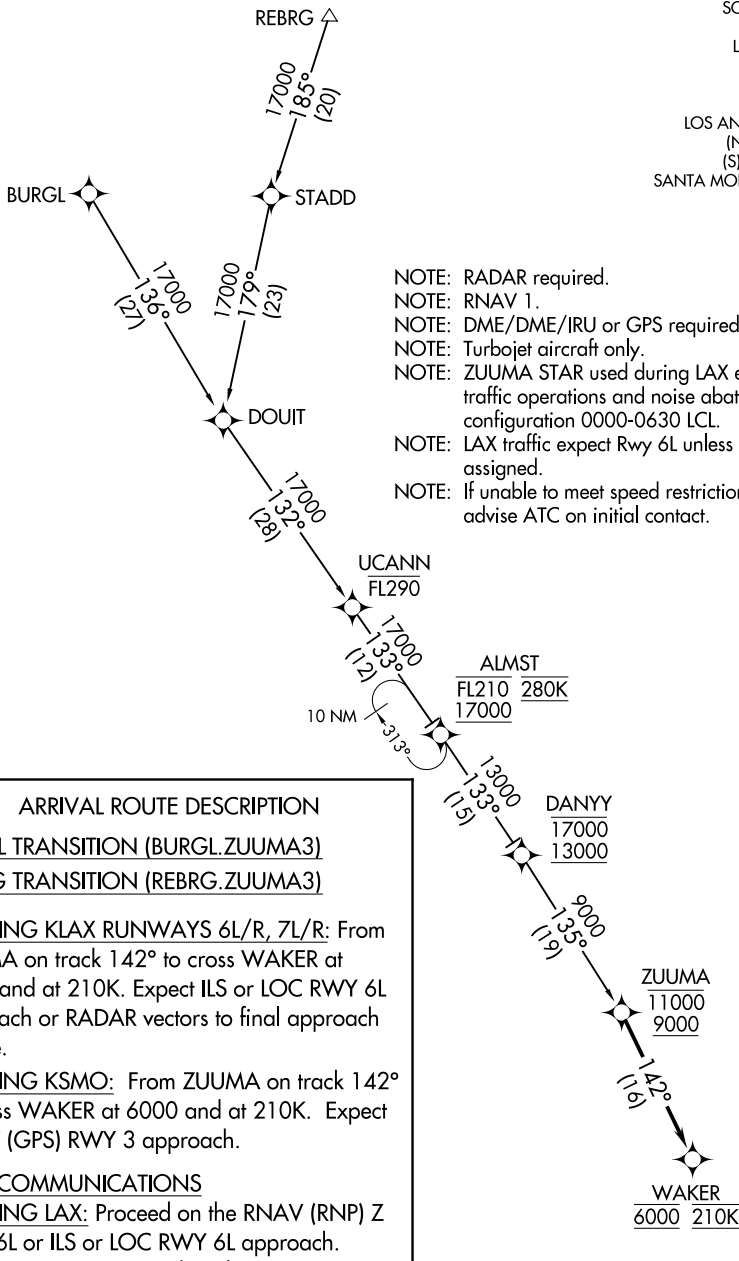


SOCAL APP CON
 128.5 360.7
 LAX D-ATIS ARR
 133.8
 SMO ATIS
 119.15
 LOS ANGELES TOWER
 (N) 133.9 239.3
 (S) 120.95 379.1
 SANTA MONICA TOWER *
 120.1 257.8



- NOTE: RADAR required.
- NOTE: RNAV 1.
- NOTE: DME/DME/IRU or GPS required.
- NOTE: Turbojet aircraft only.
- NOTE: ZUUMA STAR used during LAX east traffic operations and noise abatement configuration 0000-0630 LCL.
- NOTE: LAX traffic expect Rwy 6L unless otherwise assigned.
- NOTE: If unable to meet speed restriction at ALMST, advise ATC on initial contact.

ARRIVAL ROUTE DESCRIPTION

BURGL TRANSITION (BURGL.ZUUMA3)

REBRG TRANSITION (REBRG.ZUUMA3)

LANDING KLAX RUNWAYS 6L/R, 7L/R: From ZUUMA on track 142° to cross WAKER at 6000 and at 210K. Expect ILS or LOC RWY 6L approach or RADAR vectors to final approach course.

LANDING KSMO: From ZUUMA on track 142° to cross WAKER at 6000 and at 210K. Expect RNAV (GPS) RWY 3 approach.

LOST COMMUNICATIONS

LANDING LAX: Proceed on the RNAV (RNP) Z RWY 6L or ILS or LOC RWY 6L approach.

LANDING SMO: Proceed on the RNAV (GPS) RWY 3 approach.

NOTE: Chart not to scale.



SW-3, 30 DEC 2021 to 27 JAN 2022

SW-3, 30 DEC 2021 to 27 JAN 2022