

APP CRS	Rwy Idg	<b>5008</b>
<b>062°</b>	TDZE	<b>21</b>
	Apt Elev	<b>36</b>

# RNAV (GPS) RWY 6

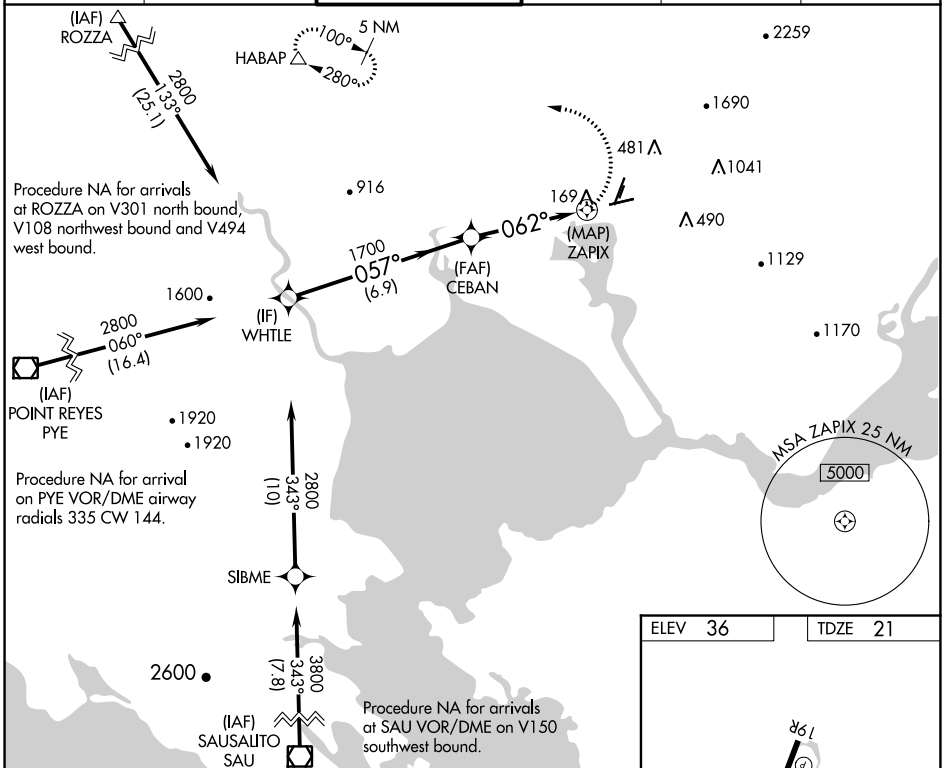
NAPA COUNTY (APC)

RNP APCH-GPS.

**▼** Rwy 6 helicopter visibility reduction below 1 SM NA.  
**▲** Circling Cats A/B/C NA northeast of Rwys 19R and 24.  
 Circling Cat D NA east of Rwy 19L-1R.  
 Straight-in Rwy 6 NA at night, Circling Rwy 6 NA at night.

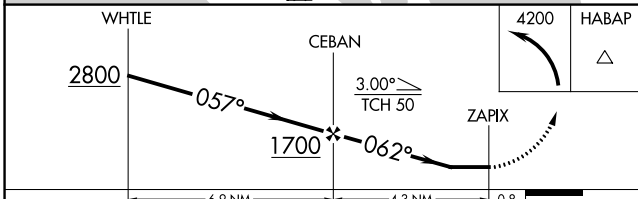
MISSED APPROACH: Climbing left turn to 4200 feet  
 HABAP and hold, continue climb-in-hold to 4200.  
 \*Missed approach requires minimum climb of 365 feet per NM to 2000.

ATIS <b>124.05</b>	OAKLAND CENTER <b>127.8 353.5</b>	NAPA TOWER ★ <b>118.7 (CTAF) 257.8</b>	GND CON <b>121.7</b>	CLNC DEL <b>127.85</b>	UNICOM <b>122.95</b>
-----------------------	--------------------------------------	---	-------------------------	---------------------------	-------------------------



SW-2, 30 DEC 2021 to 27 JAN 2022

SW-2, 30 DEC 2021 to 27 JAN 2022



ELEV 36	TDZE 21
---------	---------

REIL Rwy 6  
 MIRL Rws 6-24 and 1L-19R

CATEGORY	A	B	C	D
RNAV MDA*	480-1	459 (500-1)	480-1 3/8	459 (500-1 3/8)
RNAV MDA	1120-1 1/4 1099 (1100-1 1/4)	1120-1 1/2 1099 (1100-1 1/2)	1120-3	1099 (1100-3)
<b>C</b> CIRCLING	1120-1 1/4 1084 (1100-1 1/4)	1120-1 1/2 1084 (1100-1 1/2)	1180-3	1144 (1200-3)