

VORTAC	SGD	APP CRS	Rwy Idg	5008
<u>112.1</u>		<u>050°</u>	TDZE	21
Chan 58			Apt Elev	36

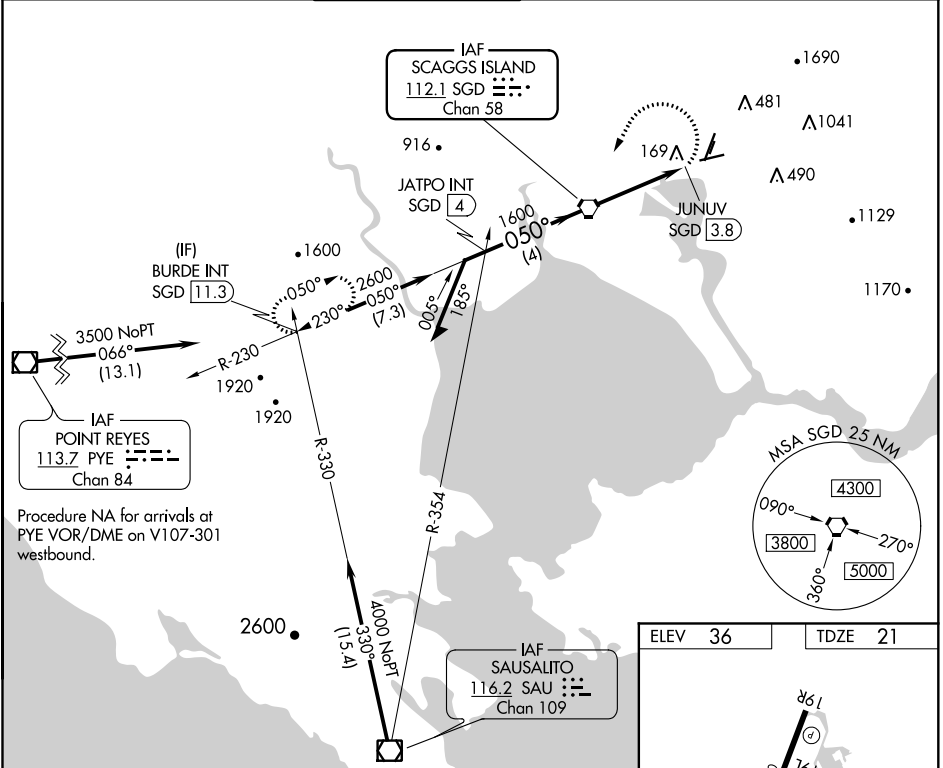
VOR RWY 6

NAPA COUNTY (APC)

▼ Rwy 6 helicopter visibility reduction below 1 SM NA. Straight-in Rwy 6 NA at night. Circling Rwy 6 NA at night. Circling Cats A/B/C NA northeast of Rwys 19R and 24. Circling Cat D NA east of Rwy 19L-1R.

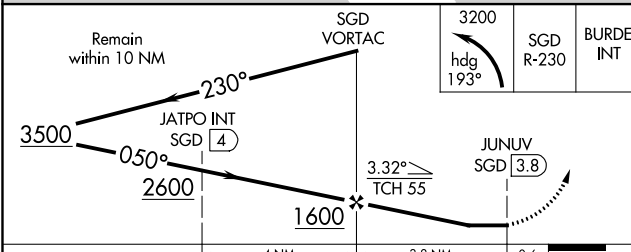
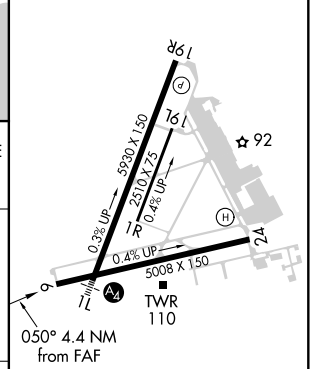
MISSED APPROACH: Climbing left turn to 3200 on heading 193° and SGD VORTAC R-230 to BURDE INT/SGD 11.3 DME and hold, continue climb-in-hold to 3200.

ATIS	OAKLAND CENTER	NAPA TOWER *	GND CON	CLNC DEL	UNICOM
124.05	127.8 353.5	118.7 (CTAF) 0 257.8	121.7	127.85	122.95



Procedure NA for arrivals at PYE VOR/DME on V107-301 westbound.

ELEV 36	TDZE 21
---------	---------



CATEGORY	A	B	C	D
S-6	460-1	439 (500-1)	460-1¼	439 (500-1¼)
C CIRCLING	600-1 564 (600-1)	680-1 644 (700-1)	1280-3 1244 (1300-3)	1300-3 1264 (1300-3)

REIL Rwy 6 !					
MIRL Rws 6-24 and 1L-19R !					
FAF to MAP 3.8 NM					
Knots	60	90	120	150	180
Min:Sec	3:48	2:32	1:54	1:31	1:16

SW-2, 30 DEC 2021 to 27 JAN 2022

SW-2, 30 DEC 2021 to 27 JAN 2022