

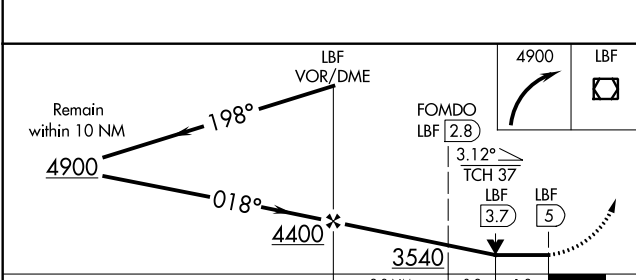
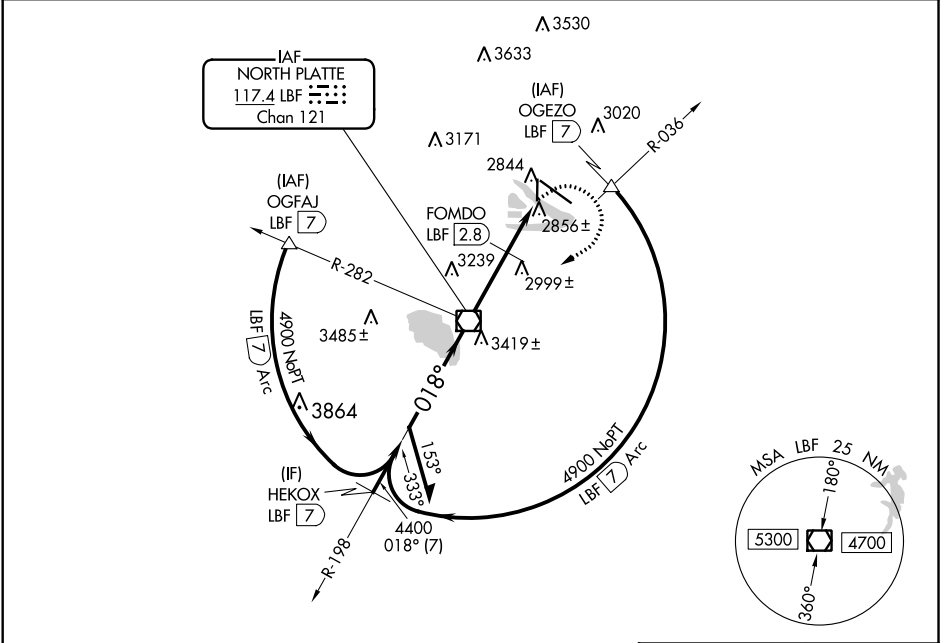
VOR/DME LBF 117.4 Chan 121	APP CRS 018°	Rwy Idg 4135 TDZE 2777 Apt Elev 2777
--	------------------------	---

VOR RWY 35

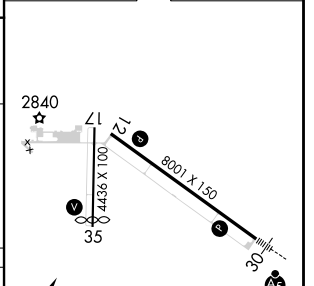
NORTH PLATTE RGNL/LEE BIRD FLD (L,B,F)

⚠ Rwy 35 helicopter visibility reduction below 3/4 SM NA. MISSED APPROACH: Climbing right turn to 4900 direct LBF VOR/DME and hold, continue climb-in-hold to 4900.

ASOS 118.425	DENVER CENTER 132.7 226.675	CLNC DEL 132.7	UNICOM 123.0 (CTAF) 0
------------------------	---------------------------------------	--------------------------	---------------------------------



ELEV 2777 TDZE 2777



CATEGORY	A	B	C	D
S-35	3540-1 763 (800-1)	3540-1¼ 763 (800-1¼)	3540-2¼ 763 (800-2¼)	3540-2½ 763 (800-2½)
C CIRCLING	3540-1 763 (800-1)	3540-1¼ 763 (800-1¼)	3540-2¼ 763 (800-2¼)	3560-2½ 783 (800-2½)
FOMDO FIX MINIMUMS				
S-35	3220-1	443 (500-1)	3220-1¼ 443 (500-1¼)	3220-1½ 443 (500-1½)
C CIRCLING	3280-1 503 (600-1)	3320-1 543 (600-1)	3420-1¾ 643 (700-1¾)	3560-2½ 783 (800-2½)

HIRL Rwy 12-30	0				
REIL Rwy 35	0				
MIRL Rwy 17-35	0				
FAF to MAP 5 NM					
Knots	60	90	120	150	180
Min:Sec	5:00	3:20	2:30	2:00	1:40

NC-2, 30 DEC 2021 to 27 JAN 2022

NC-2, 30 DEC 2021 to 27 JAN 2022