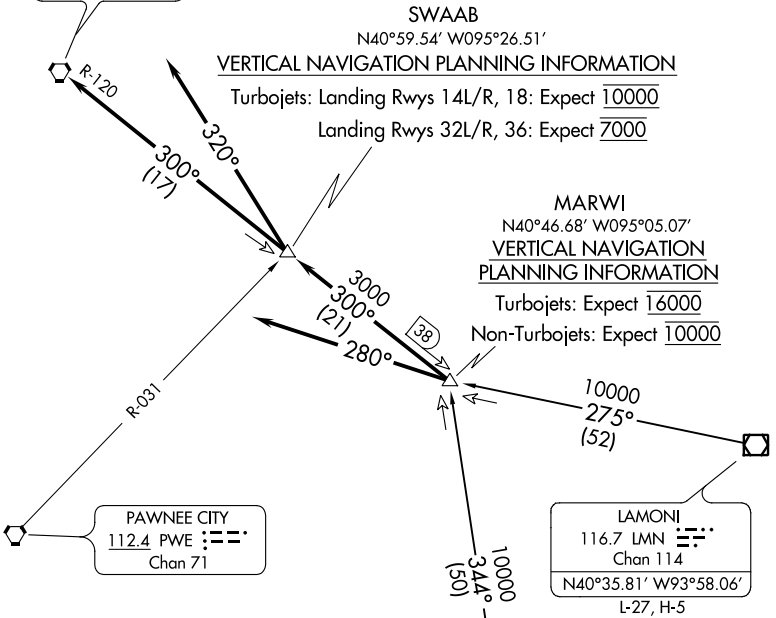


EPPLEY AIRFIELD

OMAHA
116.3 OVR
Chan 110
N41°10.03'
W95°44.21'

OFFUTT AFB



SWAAB
N40°59.54' W095°26.51'

VERTICAL NAVIGATION PLANNING INFORMATION

Turbojets: Landing Rwy 14L/R, 18: Expect 10000

Landing Rwy 32L/R, 36: Expect 7000

MARWI
N40°46.68' W095°05.07'

VERTICAL NAVIGATION PLANNING INFORMATION

Turbojets: Expect 16000

Non-Turbojets: Expect 10000

PAWNEE CITY
112.4 PWE
Chan 71

LAMONI
116.7 LMN
Chan 114
N40°35.81' W93°58.06'
L-27, H-5

ST JOSEPH
115.5 STJ
Chan 102
N39°57.63' W94°55.51'
L-10, H-5

ARRIVAL ROUTE DESCRIPTION

LAMONI TRANSITION (LMN.MARWI3): From over LMN VOR/DME via LMN R-275 to MARWI INT.

ST. JOSEPH TRANSITION (STJ.MARWI3): From over STJ VORTAC via STJ R-344 to MARWI INT.

LANDING EPPLEY AIRFIELD:

RUNWAYS 14L/R, 18: Depart MARWI INT via OVR R-120 to SWAAB INT/OVR 17 DME then via heading 320°. Thence

RUNWAYS 32L/R, 36: Depart MARWI INT via OVR R-120 to SWAAB INT/OVR 17 DME, then via OVR R-120 to OVR VORTAC. Thence

LANDING OFFUTT AFB:

Depart MARWI INT via heading 280°. Thence
. . . . Expect RADAR vectors to final approach course.

NOTE: RADAR required.

NOTE: Chart not to scale.

NC-2, 30 DEC 2021 to 27 JAN 2022

NC-2, 30 DEC 2021 to 27 JAN 2022