


APP CRS	Rwy Idg	8153
358°	TDZE	979
	Apt Elev	985

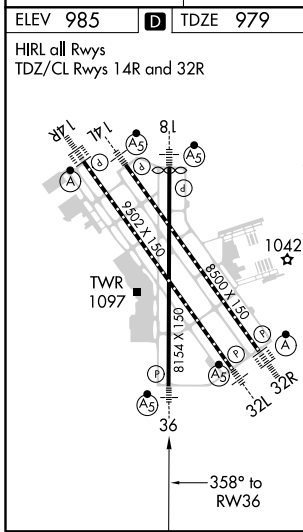
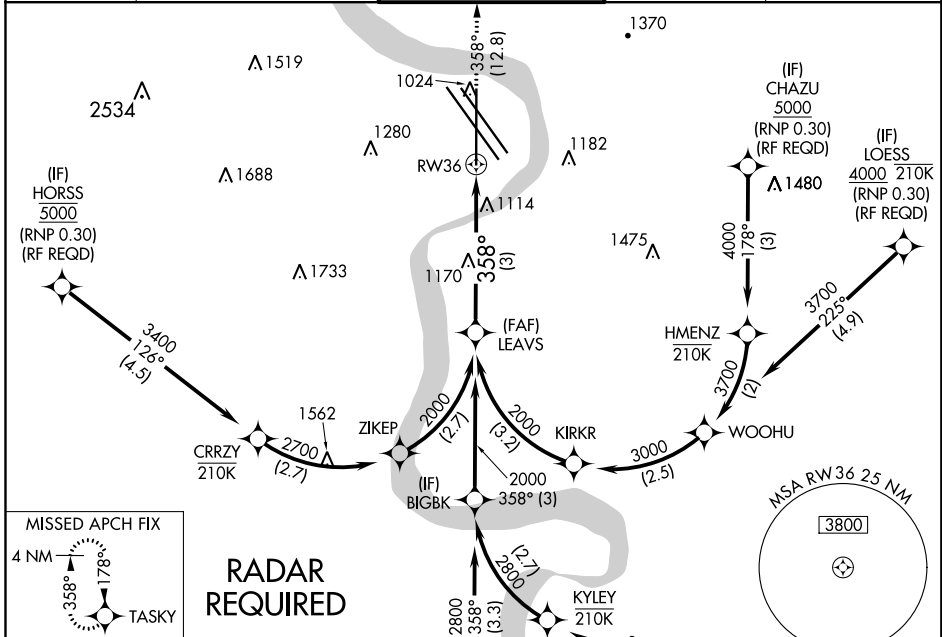
RNAV (RNP) Z RWY 36

EPPLEY AIRFIELD (OMA)

▼ For uncompensated Baro-VNAV systems, procedure NA below -19°C (-2°F) or above 54°C (130°F). When VGSi inop, procedure NA at night. For inop ALS, increase RNP 0.30 all Cats visibility to 1½ SM. GPS required.

MALSRR  MISSED APPROACH: Climb to 3000 on track 358° to TASKY and hold.

D-ATIS 120.4	OMAHA APP CON 120.1 354.05	OMAHA TOWER 132.1 256.9	GND CON 121.9	CLNC DEL 119.9
------------------------	--------------------------------------	-----------------------------------	-------------------------	--------------------------



LEAVS See planview for multiple IF locations.

3000 TASKY
↑
Ir 358°

2000

2000

GP 3.00°
TCH 58

3 NM

CATEGORY	A	B	C	D
RNP 0.30 DA	1425-1		446 (500-1)	

AUTHORIZATION REQUIRED

NC-2, 30 DEC 2021 to 27 JAN 2022

NC-2, 30 DEC 2021 to 27 JAN 2022