

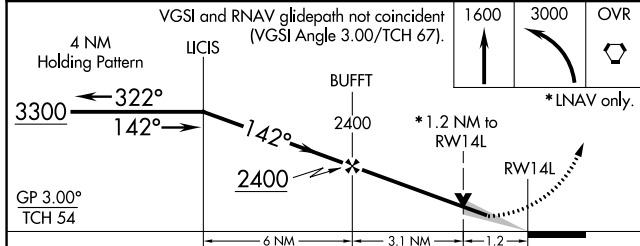
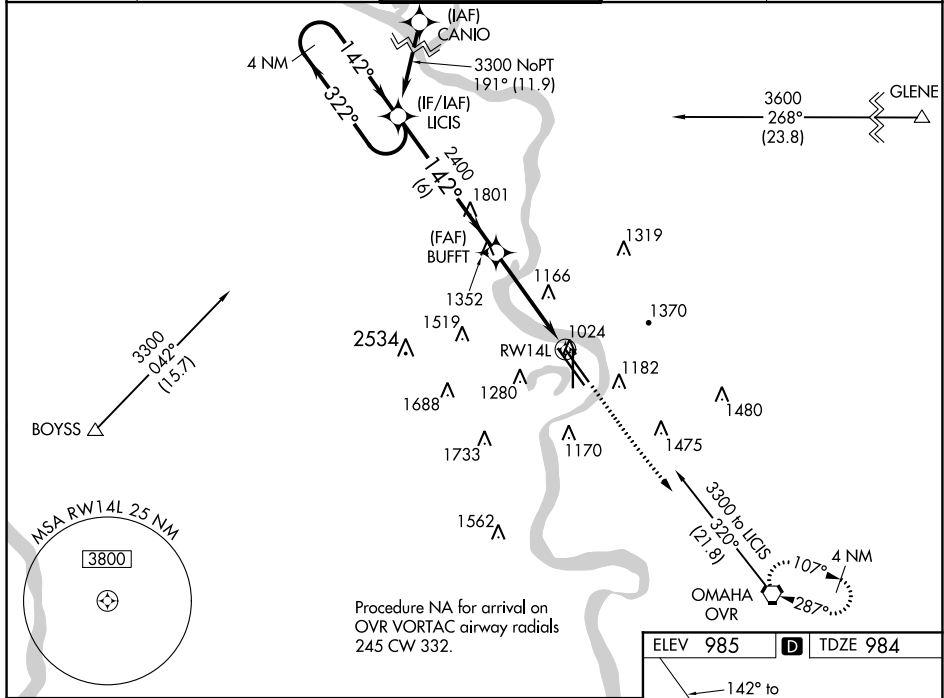
WAAS CH <b>56699</b> <b>W14B</b>	APP CRS <b>142°</b>	Rwy Idg <b>8500</b> TDZE <b>984</b> Apt Elev <b>985</b>
--	------------------------	---

# RNAV (GPS) Y RWY 14L

EPPLEY AIRFIELD (OMA)

RNP APCH.	MALSR 	MISSED APPROACH: Climb to 1600 then climbing left turn to 3000 direct OVR VORTAC and hold.
<p>▼ For uncompensated Baro-VNAV systems, LNAV/VNAV NA below -19°C (-2°F) or above 54°C (130°F). For inop ALS, increase LNAV/VNAV all Cats visibility to RVR 5500. #RVR 1800 authorized with use of FD or AP or HUD to DA.</p>		

D-ATIS <b>120.4</b>	OMAHA APP CON <b>120.1 354.05</b>	OMAHA TOWER <b>132.1 256.9</b>	GND CON <b>121.9</b>	CLNC DEL <b>119.9</b>
------------------------	--------------------------------------	-----------------------------------	-------------------------	--------------------------



ELEV 985	<b>D</b>	TDZE 984
----------	----------	----------

TWR 1097

HIRL all Rwys  
TDZ/CL Rwys 14R and 32R

NC-2, 30 DEC 2021 to 27 JAN 2022

NC-2, 30 DEC 2021 to 27 JAN 2022