

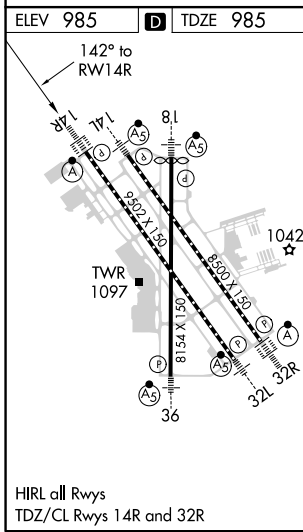
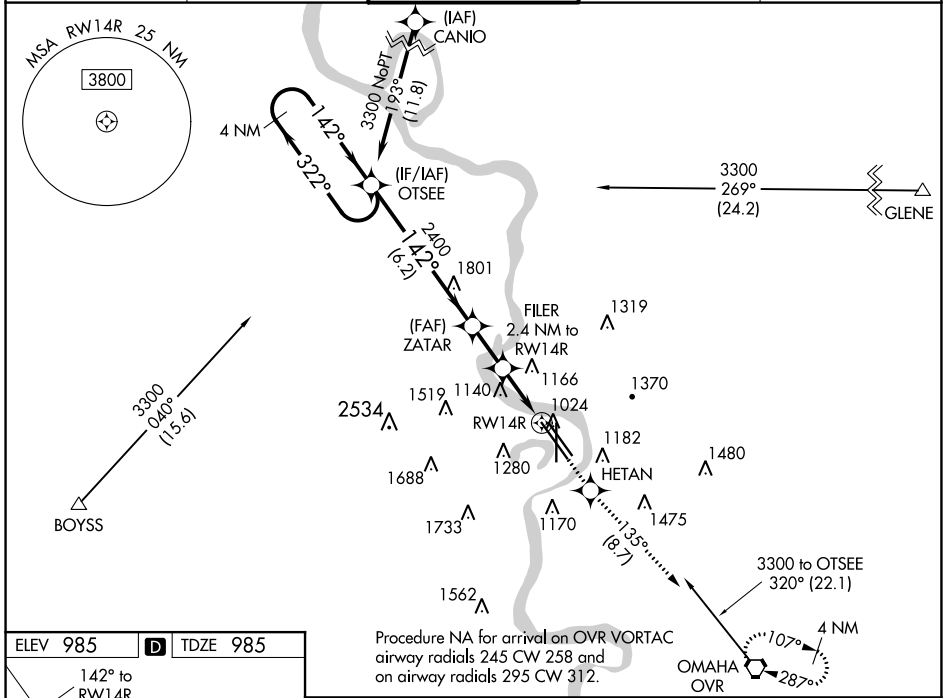
WAAS CH <b>56217</b> W14A	APP CRS <b>142°</b>	Rwy Idg TDZE Apt Elev	<b>9502</b> <b>985</b> <b>985</b>
---------------------------------	------------------------	-----------------------------	---

# RNAV (GPS) Y RWY 14R

EPPLEY AIRFIELD (OMA)

RNP APCH.	ALSF-2	MISSED APPROACH: Climb to 3000 direct HETAN and on track 135° to OVR VORTAC and hold.
<p>▼ For uncompensated Baro-VNAV systems, LNAV/VNAV NA below -19°C (-2°F) or above 54°C (130°F).                  ▲ For inop ALS, increase LNAV/VNAV all Cats visibility to 1 3/8 SM.</p>		

D-ATIS <b>120.4</b>	OMAHA APP CON <b>120.1 354.05</b>	OMAHA TOWER <b>132.1 256.9</b>	GND CON <b>121.9</b>	CLNC DEL <b>119.9</b>
------------------------	--------------------------------------	-----------------------------------	-------------------------	--------------------------



	OTSEE	ZATAR	FILER	HETAN	OVR
	4 NM Holding Pattern	2400	2.4 NM to RWY 14R	3000	tr 135°
	3300	322°	142°	1800	*LNAV only
	GP 3.00° TCH 57	142°	*1.1 NM to RWY 14R		
		6.2 NM	1.9 NM	1.3 NM	1.1 NM
CATEGORY	A	B	C	D	
LPV DA		1185/18	200 (200-1/2)		
LNAV/VNAV DA		1465/50	480 (500-1)		
LNAV MDA	1380/24	395 (400-1/2)	1380/35	395 (400-5/8)	
CIRCLING	1660-1 675 (700-1)	1680-1 695 (700-1)	2000-3 1015 (1100-3)	2040-3 1055 (1100-3)	

NC-2, 30 DEC 2021 to 27 JAN 2022

NC-2, 30 DEC 2021 to 27 JAN 2022