

WAAS CH <b>97325</b> <b>W10A</b>	APP CRS <b>099°</b>	Rwy Idg TDZE Apt Elev <b>6501</b> <b>1251</b> <b>1252</b>
--	------------------------	--

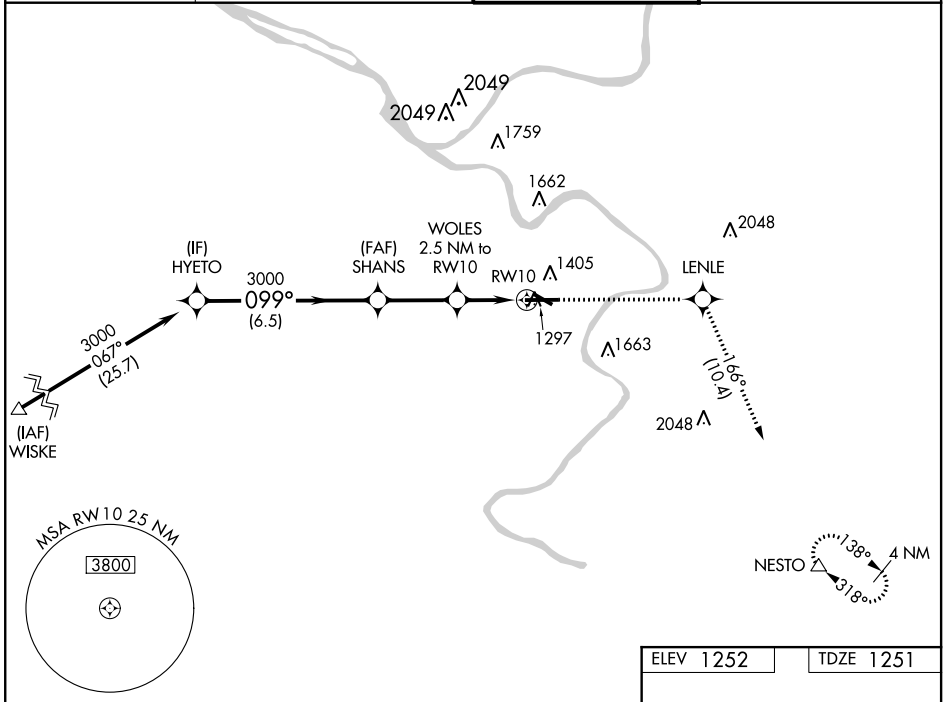
# RNAV (GPS) RWY 10

ALLEGHENY COUNTY (AGC)

For uncompensated Baro-VNAV systems, LNAV/VNAV NA below -17°C (2°F) or above 54°C (130°F). DME/DME RNP-0.3 NA.

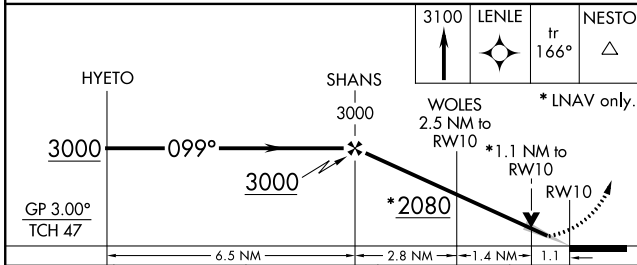
MISSED APPROACH: Climb to 3100 direct LENLE and on track 166° to NESTO and hold.

ATIS <b>120.55</b>	PITTSBURGH APP CON <b>119.35 285.575</b>	ALLEGHENY TOWER <b>121.1 239.0</b>	GND CON <b>121.7</b>
-----------------------	---	---------------------------------------	-------------------------

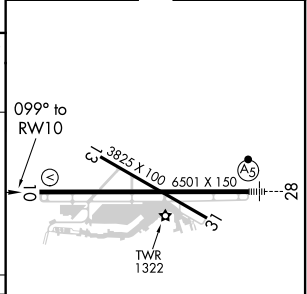


NE-4, 30 DEC 2021 to 27 JAN 2022

NE-4, 30 DEC 2021 to 27 JAN 2022



ELEV 1252	TDZE 1251
-----------	-----------



CATEGORY	A	B	C	D
LPV DA		1451-3/4	200 (200-3/4)	
LNAV/VNAV DA		1554-1	303 (400-1)	
LNAV MDA	1660-1	409 (500-1)	1660-1 1/8	409 (500-1 1/8)
CIRCLING	1720-1	468 (500-1)	1980-2 728 (800-2)	1980-2 1/4 728 (800-2 1/4)

REIL Rwy 10, 13, and 31  
HIRL Rwy 10-28 and 13-31