

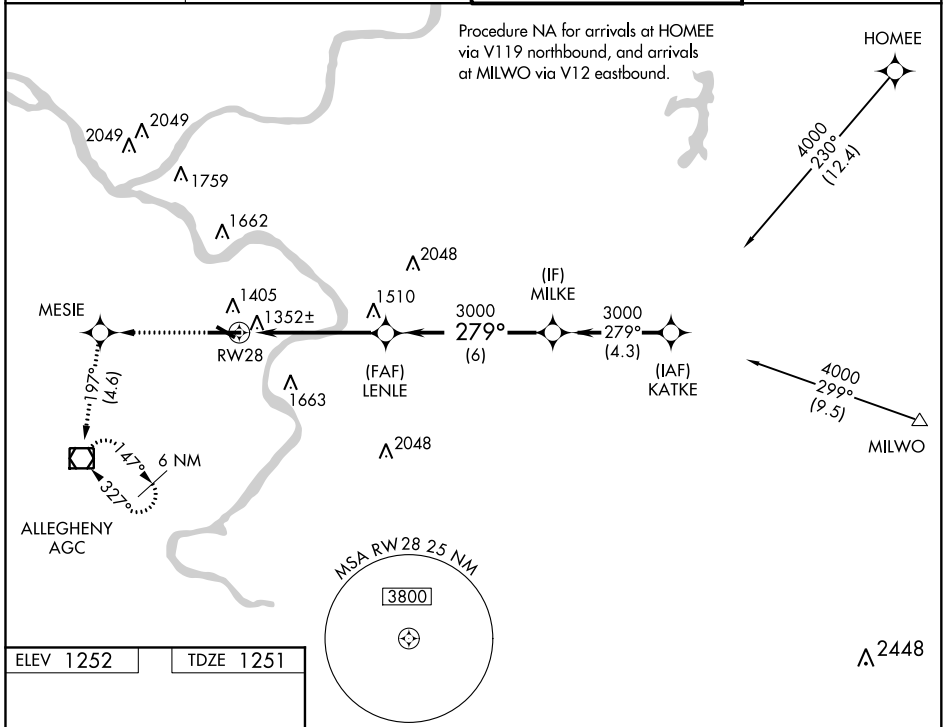
WAAS CH <b>65625</b> <b>W28A</b>	APP CRS <b>279°</b>	Rwy ldg TDZE <b>1251</b> Apt Elev <b>1252</b>	<b>6501</b>
--	------------------------	---	-------------

# RNAV (GPS) RWY 28

ALLEGHENY COUNTY (AGC)

<p><b>▼</b> Baro-VNAV NA below -17°C (2°F). DME/DME RNP-0.3 NA. For inoperative MALSRS, increase LPV visibility to RVR 5000 all Cats.</p>	<p>MALSRS</p>	<p>MISSED APPROACH: Climb to 3000 direct MESIE and via 197° track to AGC VOR/DME and hold.</p>
---	---------------	--

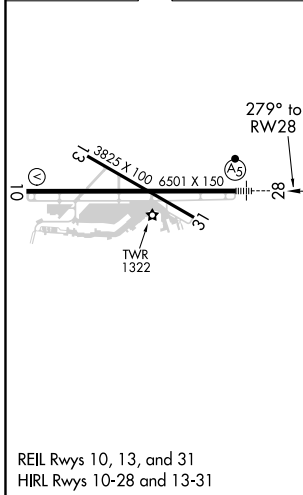
ATIS <b>120.55</b>	PITTSBURGH APP CON <b>119.35 285.575</b>	ALLEGHENY TOWER <b>121.1 239.0</b>	GND CON <b>121.7</b>
-----------------------	---	---------------------------------------	-------------------------



NE-4, 30 DEC 2021 to 27 JAN 2022

NE-4, 30 DEC 2021 to 27 JAN 2022

ELEV 1252	TDZE 1251
-----------	-----------



3000	MESIE	tr 197°	AGC	LENLE	MILKE	Procedure Turn NA
3000				279°	3000	GP 3.00° TCH 51

CATEGORY	A	B	C	D
LPV DA	1563/24 312 (400-½)			
LNAV/VNAV DA	1625/40 374 (400-¾)			
LNAV MDA	1700/24 449 (500-½)	1700/40 449 (500-¾)	1700/50 449 (500-1)	
<b>☑</b> CIRCLING	1720-1¼ 468 (500-1¼)	1980-2 728 (800-2)	1980-2¼ 728 (800-2¼)	