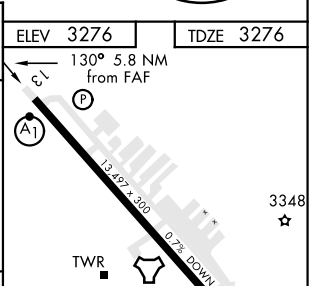
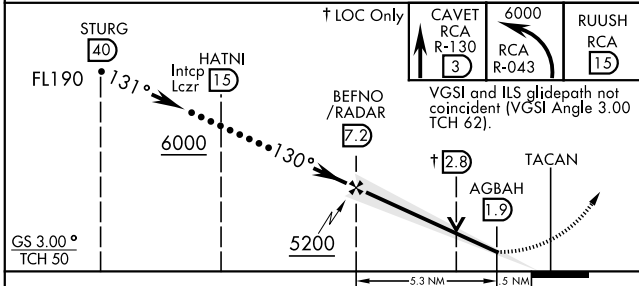
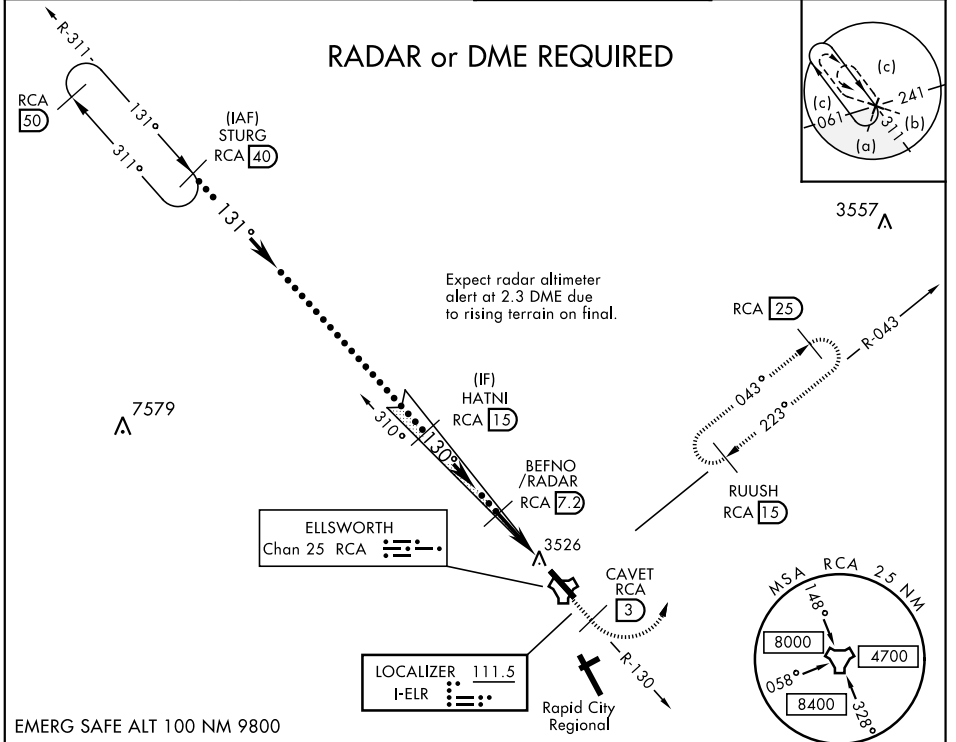


HI-ILS or LOC Z RWY 13

LOC I-ELR 111.5	APCH CRS 130°	Rwy Ldg 13,497 TDZE 3276 Arprt Elev 3276	JAL-343 [USAF]	ELLSWORTH AFB (KRCA)
* When ALS inop, increase RVR to 40 and vis to ¼ mile. ** When ALS inop, increase vis to 1 ½ miles. *** CAT E circling restricted to 28 BW aircraft only; 28 BW aircraft will remain within Class D airspace.		ALSF-1 (A1)	MISSED APPROACH: Track outbound RCA R-130 to 3 DME (CAVET), then turn left to join RCA R-043 to 15 DME (RUUSH) and hold. Maintain 6000.	

ATIS ★ 120.625 269.9	ELLSWORTH APP CON 119.5 259.1	ELLSWORTH TOWER ★ 126.05 253.5	GND CON 121.8 275.8
--------------------------------	---	--	-------------------------------



CATEGORY	C	D	E			
S-ILS 13 ★	3476/24	200	(200-½)			
S-LOC 13 ★★	3780/55	504	(600-1)			
*** CIRCLING	3880-1¾ 604 (700-1¾)	3980-2¼ 704 (800-2¼)	4040-2¾ 764 (800-2¾)			
	Knots	120	140	160	180	200
	Min:Sec	2:39	2:16	1:59	1:46	1:35

HI-ILS or LOC Z RWY 13

NC-1, 30 DEC 2021 to 27 JAN 2022

NC-1, 30 DEC 2021 to 27 JAN 2022