

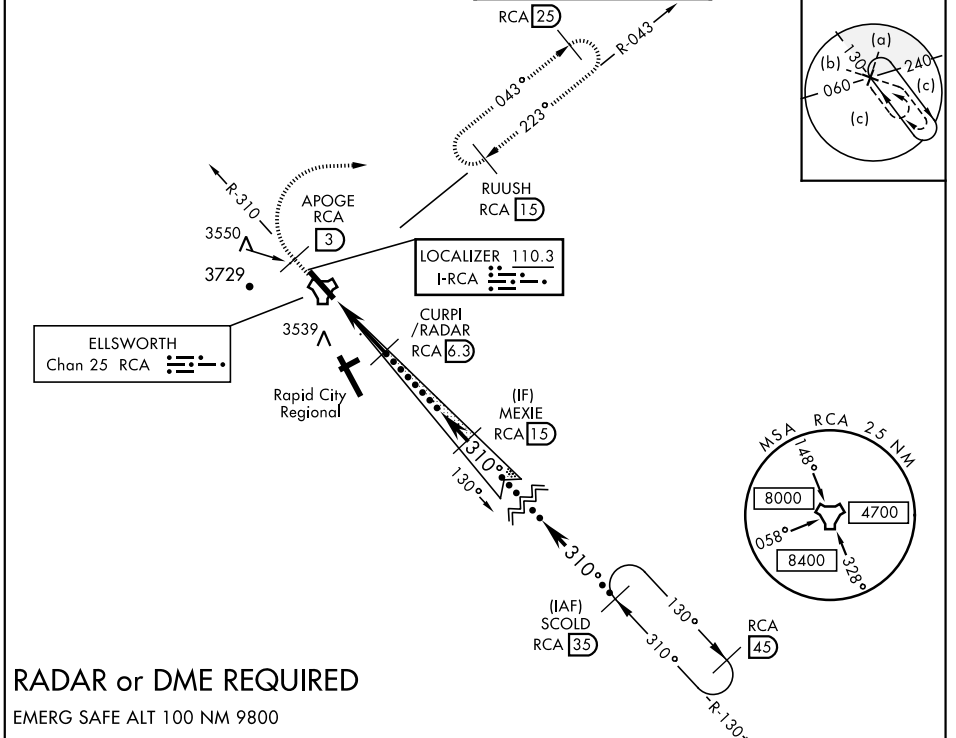
# HI-ILS or LOC Z RWY 31

LOC I-RCA <b>110.3</b>	APCH CRS <b>310°</b>	Rwy Ldg <b>13,497</b> TDZE <b>3192</b> Arprt Elev <b>3276</b>	JAL-343 [USAF]	ELLSWORTH AFB (KRCA)
---------------------------	-------------------------	---	----------------	----------------------

**▼** \* When ALS inop, increase RVR to 40, vis to ¼ mile.  
 \*\* When ALS inop, increase vis to 1 ¾ miles.  
 \*\*\* CAT E circling restricted to 28th BW aircraft only; 28th BW aircraft will remain within Class D airspace.

ALSF-1 MISSED APPROACH: Track outbound RCA R-310 to 3 DME (APOGE), then turn right to join RCA R-043 to 15 DME (RUUSH) and hold. Maintain 6000.

ATIS ★ <b>120.625 269.9</b>	ELLSWORTH APP CON <b>119.5 259.1</b>	ELLSWORTH TOWER ★ <b>126.05 253.5</b>	GND CON <b>121.8 275.8</b>
--------------------------------	---	--	-------------------------------



NC-1, 30 DEC 2021 to 27 JAN 2022

NC-1, 30 DEC 2021 to 27 JAN 2022

## RADAR or DME REQUIRED

EMERG SAFE ALT 100 NM 9800

APOGE RCA R-310  3	6000  RCA R-043	RUUSH RCA  15	VGSI and ILS glidepath not coincident (VGSI Angle 3.00 TCH 70).	SCOLD  35	ELEV 3276	TDZE 3192												
† LOC Only TACAN OPOGE  1.3 CURPI/RADAR  6.3 Intcp Lczr MEXIE  15 GS 3.00° TCH 54 FL180																		
<table border="1"> <thead> <tr> <th>CATEGORY</th> <th>C</th> <th>D</th> <th>E</th> </tr> </thead> <tbody> <tr> <td>S-ILS 31*</td> <td>3392/24</td> <td>200</td> <td>(200-½)</td> </tr> <tr> <td>S-LOC 31**</td> <td>3800-1 ¾</td> <td>608</td> <td>(600-1 ¾)</td> </tr> </tbody> </table>				CATEGORY	C	D	E	S-ILS 31*	3392/24	200	(200-½)	S-LOC 31**	3800-1 ¾	608	(600-1 ¾)	HIRL Rwy 13-31 FAF to MAP 5.0 NM		
CATEGORY	C	D	E															
S-ILS 31*	3392/24	200	(200-½)															
S-LOC 31**	3800-1 ¾	608	(600-1 ¾)															
*** CIRCLING				<table border="1"> <thead> <tr> <th>Knots</th> <th>120</th> <th>140</th> <th>160</th> <th>180</th> <th>200</th> </tr> </thead> <tbody> <tr> <td>Min:Sec</td> <td>2:30</td> <td>2:09</td> <td>1:53</td> <td>1:40</td> <td>1:30</td> </tr> </tbody> </table>			Knots	120	140	160	180	200	Min:Sec	2:30	2:09	1:53	1:40	1:30
Knots	120	140	160	180	200													
Min:Sec	2:30	2:09	1:53	1:40	1:30													

# HI-ILS or LOC Z RWY 31