

HI-TACAN Z RWY 13

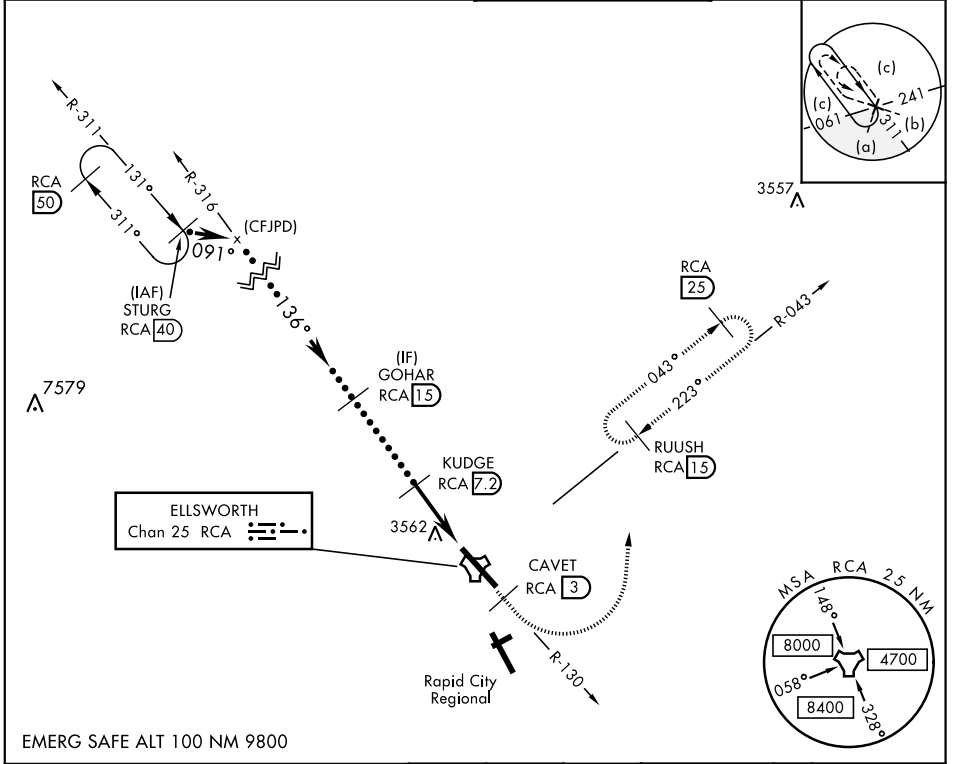
TACAN RCA Chan 25	APCH CRS 136°	Rwy ldg 13,497 TDZE 3276 Arprt Elev 3276	JAL-343 [USAF]	ELLSWORTH AFB (KRCA)
----------------------	------------------	--	----------------	----------------------

* When ALS inop, increase CAT CDE vis to 1½ mile.
 ** CAT E circling restricted to 28th BW aircraft only; 28th BW aircraft will remain within Class D airspace.



MISSED APPROACH: Track outbound RCA R-130 to 3 DME (CAVET), then turn left to join RCA R-043 to 15 DME (RUUSH) and hold. Maintain 6000.

ATIS * 120.625 269.9	ELLSWORTH APP CON 119.5 259.1	ELLSWORTH TOWER * 126.05 253.5	GND CON 121.8 275.8
--------------------------------	---	--	-------------------------------



EMERG SAFE ALT 100 NM 9800

STURG R-311 (40) FL190 Intcp R-316 (CFJPD) 3.05° TCH 62	GOHAR (15) 6000 136°	KUDGE (7.2) 5200 2.9	CAVET (3) RCA R-130 6000 RCA R-043	TUTGE (1.9)	RUUSH (15) 6000	ELEV 3276 TDZE 3276
CATEGORY	C	D	E			
S-13 *	3820/60	544 (600-1½)				
CIRCLING **	3880-1¾ 604 (700-1¾)	3980-2¼ 704 (800-2¼)	4040-2¾ 764 (800-2¾)	HIRL Rwy 13-31		

HI-TACAN Z RWY 13

NC-1, 30 DEC 2021 to 27 JAN 2022

NC-1, 30 DEC 2021 to 27 JAN 2022