

RAPID CITY, SOUTH DAKOTA

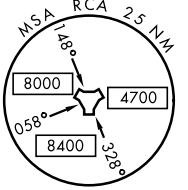
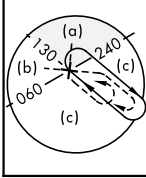
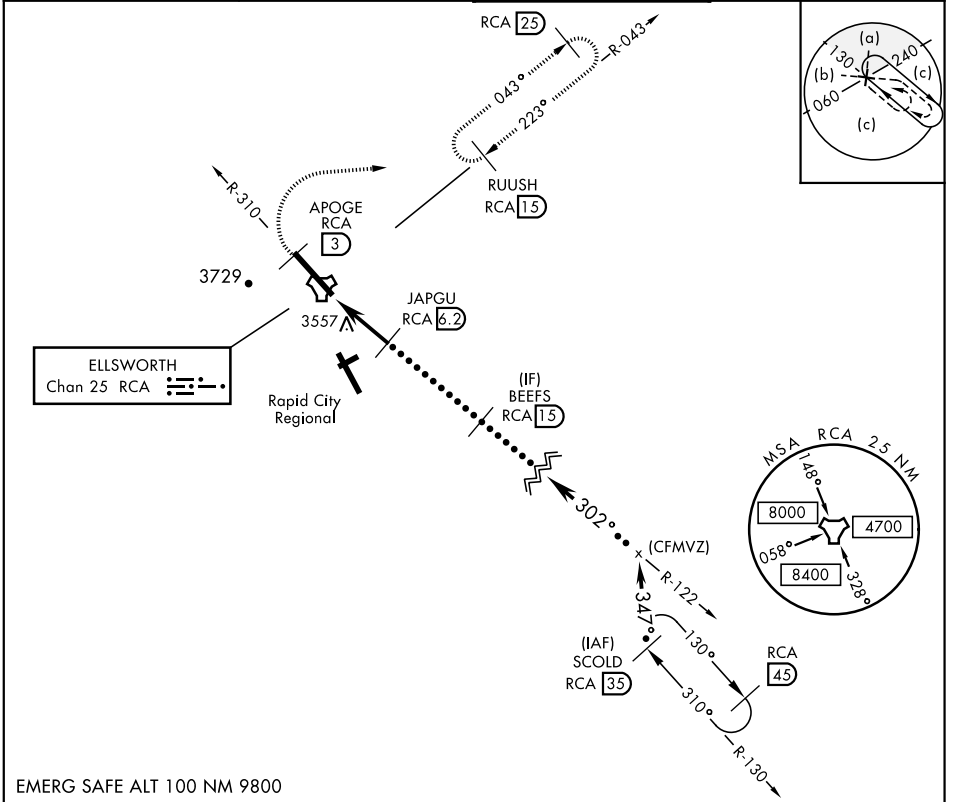
HI-TACAN Z RWY 31

TACAN RCA Chan 25	APCH CRS 302°	Rwy ldg 13,497 TDZE 3192 Arprt Elev 3276	JAL-343 [USAF]	ELLSWORTH AFB (KRCA)
-----------------------------	-------------------------	---	----------------	----------------------

*** When ALS inop, increase CAT CDE vis to 1 3/4 mile.**
**** CAT E circling restricted to 28th BW aircraft only; 28th BW aircraft will remain within Class D airspace.**

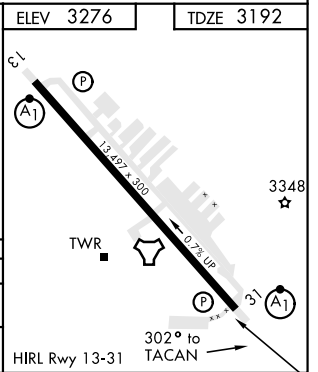
ALSF-1 MISSED APPROACH: Track outbound RCA R-310 to 3 DME (APOGE), then turn right to join RCA R-043 to 15 DME (RUUSH) and hold. Maintain 6000.

ATIS ★ 120.625 269.9	ELLSWORTH APP CON 119.5 259.1	ELLSWORTH TOWER ★ 126.05 253.5	GND CON 121.8 275.8
--------------------------------	---	--	-------------------------------



EMERG SAFE ALT 100 NM 9800

APOGE RCA R-310 3	6000 RCA R-043	RUUSH RCA 15	SCOLD R-130 35	ELEV 3276	TDZE 3192
TACAN	YODO 1.3	JAPGU 6.2	BEEFS 15	Incp R-122 (CFMVZ)	FL180
.5 NM		4.9 NM		3.06° TCH 70	
CATEGORY	C	D	E		
S-31*	3820-1 3/8		628 (600-1 3/8)		
CIRCLING**	3880-1 7/8 604 (700-1 7/8)	3980-2 1/4 704 (800-2 1/4)	4040-2 3/4 764 (800-2 3/4)		



RAPID CITY, SOUTH DAKOTA 44°09'N-103°06'W ELLSWORTH AFB (KRCA)
 Amdt 1 15SEP16

HI-TACAN Z RWY 31

NC-1, 30 DEC 2021 to 27 JAN 2022

NC-1, 30 DEC 2021 to 27 JAN 2022