

ILS or LOC Y RWY 13

LOC I-ELR 111.5	APCH CRS 130°	Rwy Idg 13,497 TDZE 3276 Arprt Elev 3276	AL-343 [USAF]	ELLSWORTH AFB (KRCA)
---------------------------	-------------------------	---	---------------	----------------------

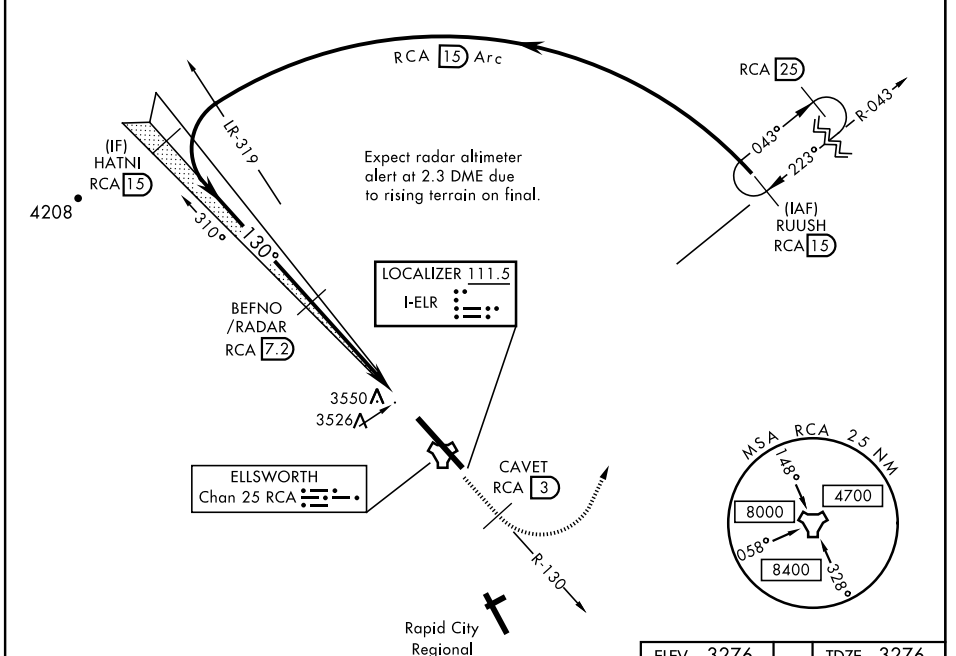
▼ *When ALS inop, increase RVR to 40 and vis to 3/4 mile.
** When ALS inop, increase CAT AB RVR to 55 and vis to 1 mile, CAT CDE vis to 1 1/8 miles.



MISSED APPROACH: Track outbound RCA R-130 to 3 DME (CAVET), then turn left to join RCA R-043 to 15 DME (RUUSH) and hold. Maintain 6000.

ATIS * 120.625 269.9	ELLSWORTH APP CON 119.5 259.1	ELLSWORTH TOWER * 126.05 253.5	GND CON 121.8 275.8
--------------------------------	---	--	-------------------------------

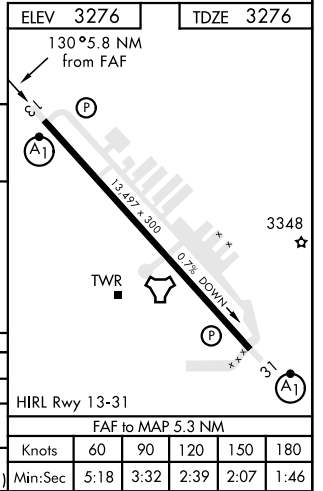
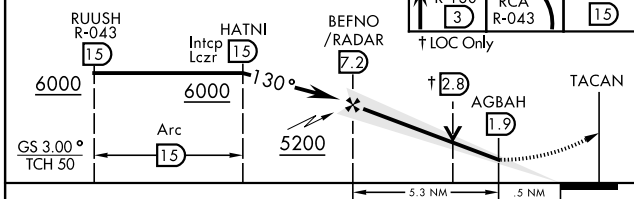
*** CAT E circling restricted to 28th BW aircraft only; 28th BW aircraft will remain within Class D airspace.



RADAR or DME REQUIRED

EMERG SAFE ALT 100 NM 9800

VGSI and ILS glidepath not coincident (VGSI Angle 3.00 TCH 62).



CATEGORY	A	B	C	D	E
S-ILS 13 *	3476/24		200	(200-1/2)	
S-LOC 13 **	3780/24 504 (600-1/2)		3780/55 504 (600-1)		
CIRCLING ***	3860-1	3880-1	3880-1 3/4	3980-2 1/4	4040-2 3/4
	584 (600-1)	604 (700-1)	604 (700-1 3/4)	704 (800-2 1/4)	764 (800-2 3/4)

HIRL Rwy 13-31					
FAF to MAP 5.3 NM					
Knots	60	90	120	150	180
Min:Sec	5:18	3:32	2:39	2:07	1:46

ILS or LOC Y RWY 13

NC-1, 30 DEC 2021 to 27 JAN 2022

NC-1, 30 DEC 2021 to 27 JAN 2022