

RAPID CITY, SOUTH DAKOTA

# ILS or LOC Y RWY 31

LOC I-RCA <b>110.3</b>	APCH CRS <b>310°</b>	Rwy ldg <b>13,497</b> TDZE <b>3192</b> Arprt Elev <b>3276</b>
---------------------------	-------------------------	---

AL-343 [USAF]

ELLSWORTH AFB (KRCA)

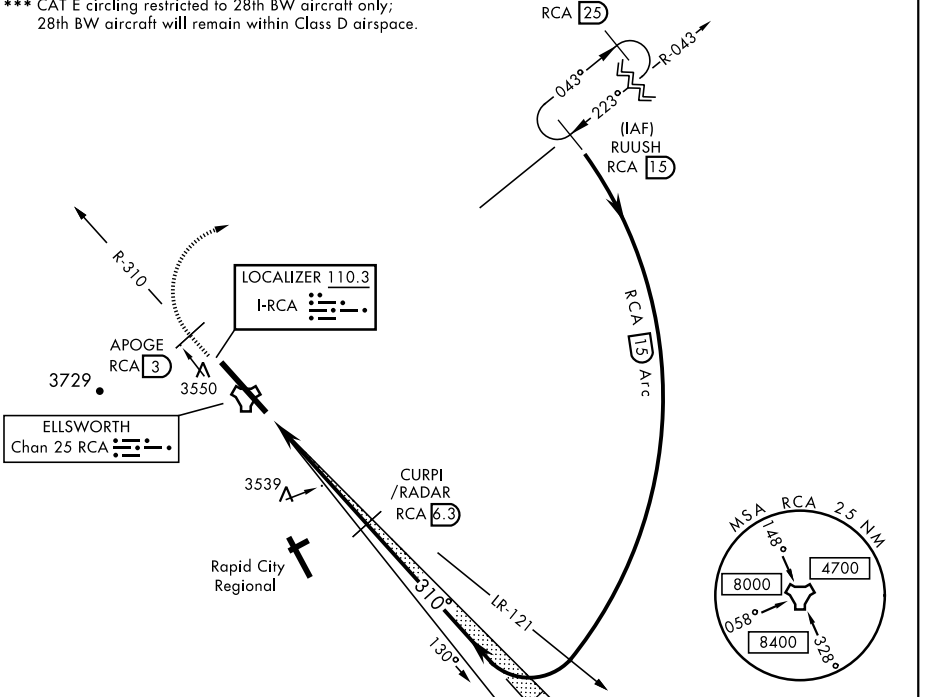
**▼** \* When ALS inop, increase RVR to 40 and vis to 3/4 mile.  
**\*\*** When ALS inop, increase CAT AB RVR to 55 and vis to 1 mile, CAT CDE vis to 1 3/4 miles.



**MISSED APPROACH:** Track outbound RCA R-310 to 3 DME (APOGE), then turn right to join RCA R-043 outbound to RCA 1.5 DME (RUUSH) and hold. Maintain 6000.

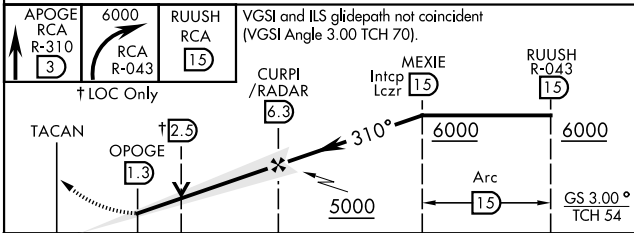
ATIS * <b>120.625 269.9</b>	ELLSWORTH APP CON <b>119.5 259.1</b>	ELLSWORTH TOWER * <b>126.05 253.5</b>	GND CON <b>121.8 275.8</b>
--------------------------------	---	--	-------------------------------

**\*\*\*** CAT E circling restricted to 28th BW aircraft only;  
 28th BW aircraft will remain within Class D airspace.

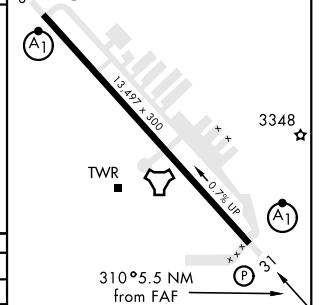


## RADAR or DME REQUIRED

EMERG SAFE ALT 100 NM 9800



ELEV 3276	TDZE 3192
HIRL Rwy 13-31	



CATEGORY	A	B	C	D	E
S-ILS 31*	3392/24				
S-LOC 31**	3800/24	608 (600-1/2)	3800-1 3/8	608 (600-1 3/8)	
<b>CIRCLING</b> ***	3860-1 584 (600-1)	3880-1 604 (700-1)	3880-1 3/4 604 (700-1 3/4)	3980-2 1/4 704 (800-2 1/4)	4040-2 3/4 764 (800-2 3/4)

FAF to MAP 5 NM					
Knots	60	90	120	150	180
Min:Sec	5:00	3:20	2:30	2:00	1:40

RAPID CITY, SOUTH DAKOTA

44°09'N-103°06'W

ELLSWORTH AFB (KRCA)

Amtd 1 15SEP16

# ILS or LOC Y RWY 31

NC-1, 30 DEC 2021 to 27 JAN 2022

NC-1, 30 DEC 2021 to 27 JAN 2022