

RAPID CITY, SOUTH DAKOTA

TACAN-A

VORTAC RAP 112.3 Chan 70	APCH CRS 146°	Rwy ldg TDZE Arprt Elev N/A N/A 3276
--------------------------------	------------------	---

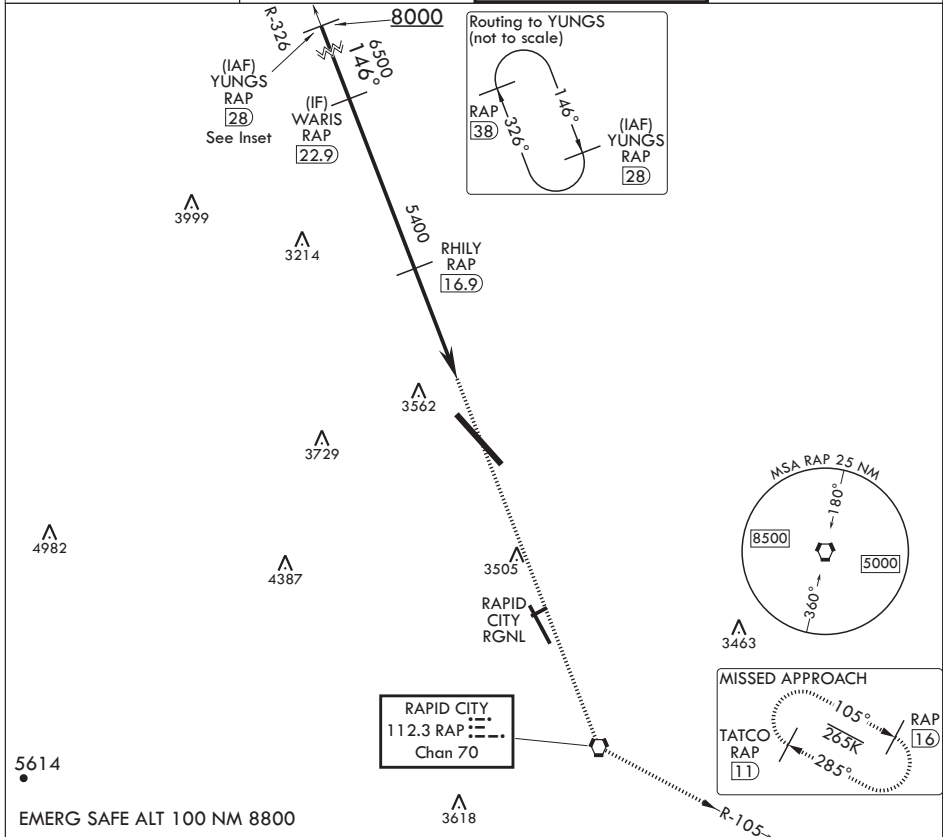
AL-343 (USAF)

ELLSWORTH AFB (KRCA)

⚠ * CAT E circling restricted to 28th BW aircraft only; 28th BW aircraft will remain within Class D airspace.

MISSED APPROACH: Track inbound RAP R-326 to RAP VORTAC then turn left to join RAP R-105 outbound to 11 DME and hold. Maintain 6000.

ATIS* 120.625 269.9	APP CON 119.5 259.1	TOWER* 126.05 253.5	GND CON 121.8 275.8
------------------------	------------------------	------------------------	------------------------



CATEGORY	A	B	C	D	E
	3860-1 3/8 584 (600-1 3/8)	3880-1 3/8 604 (700-1 3/8)	3880-1 1/4 604 (700-1 1/4)	3980-2 1/4 704 (800-2 1/4)	4040-2 3/4 764 (800-2 3/4)

CIRCLING*

RAPID CITY, SOUTH DAKOTA

44°09'N - 103°06'W

ELLSWORTH AFB (KRCA)

TACAN-A

Amdt 2 22JUN17

NC-1, 30 DEC 2021 to 27 JAN 2022

NC-1, 30 DEC 2021 to 27 JAN 2022