

TACAN Y RWY 31

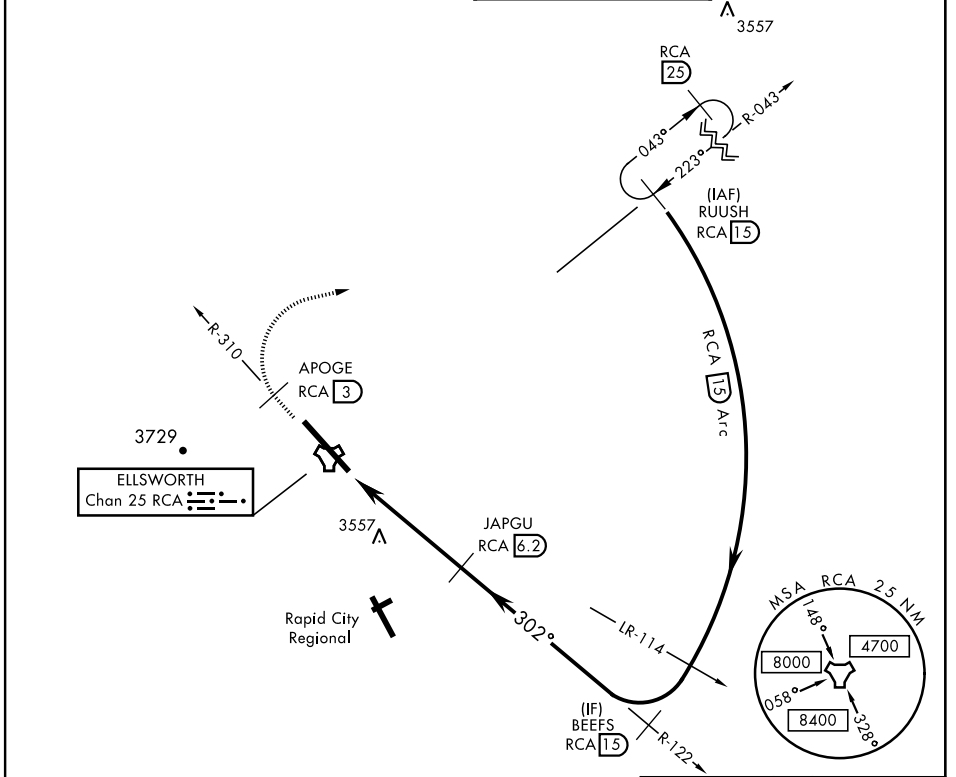
TACAN RCA Chan 25	APCH CRS 302°	Rwy ldg 13,497 TDZE 3192 Arprt Elev 3276	AL-343 [USAF]	ELLSWORTH AFB (KRCA)
----------------------	------------------	--	---------------	----------------------

* When ALS inop, increase CAT AB RVR to 55 and vis to 1 mile, increase CAT CDE vis to 1 1/4 mile.
 ** CAT E circling restricted to 28th BW aircraft only; 28th BW aircraft will remain within Class D airspace.



MISSED APPROACH: Track outbound RCA R-310 to 3 DME (APOGE), then turn right to join RCA R-043 to 15 DME (RUUSH) and hold. Maintain 6000.

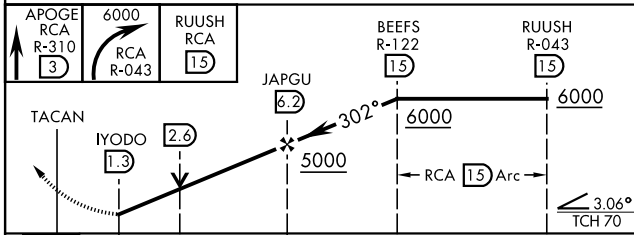
ATIS * 120.625 269.9	ELLSWORTH APP CON 119.5 259.1	ELLSWORTH TOWER * 126.05 253.5	GND CON 121.8 275.8
-------------------------	----------------------------------	-----------------------------------	------------------------



NC-1, 30 DEC 2021 to 27 JAN 2022

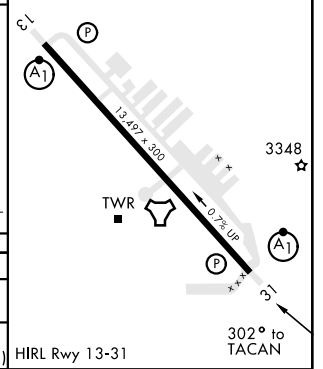
NC-1, 30 DEC 2021 to 27 JAN 2022

EMERG SAFE ALT 100 NM 9800



ELEV 3276	TDZE 3192
-----------	-----------

CATEGORY	A	B	C	D	E
S-31*	3820/24	628 (600-1/2)	3820-1 3/8	628 (600-1 3/8)	
CIRCLING**	3860-1 584 (600-1)	3880-1 604 (700-1)	3880-1 7/8 604 (700-1 7/8)	3980-2 1/4 704 (800-2 1/4)	4040-2 3/4 764 (800-2 3/4)



RAPID CITY, SOUTH DAKOTA 44°09'N-103°06'W ELLSWORTH AFB (KRCA)

Amtd 1 15SEP16

TACAN Y RWY 31