

# TACAN RWY 36

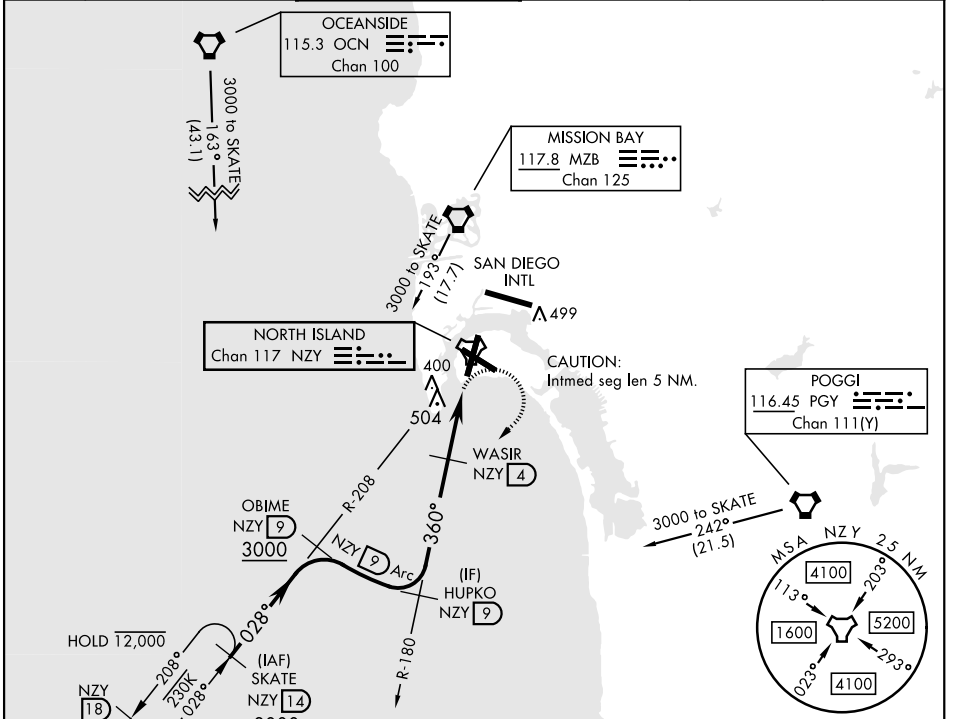
TACAN NZY Chan <b>117</b>	APCH CRS <b>360°</b>	Rwy Idg TDZE Arprt Elev <b>8000</b> <b>19</b> <b>26</b>
------------------------------	-------------------------	--

AL-374 [USN]

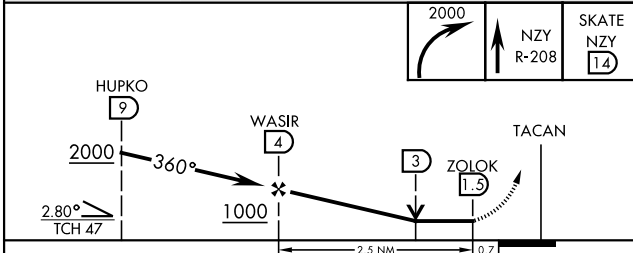
NORTH ISLAND NAS (HALSEY FIELD) (KNZY)

<p>▼ *When ALS inop, increase CAT A vis to 1 mile, CAT B vis to 1/4 miles, CAT CD vis to 2 miles.</p>	<p>SALSF A2</p>	<p>MISSED APPROACH: Climbing right turn to 2000 intercept the NZY TACAN R-208 to SKATE and hold.</p>
---	---------------------	--

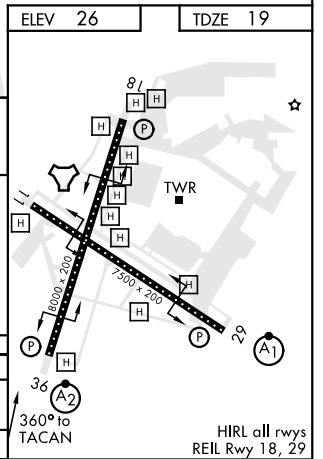
<p>ATIS ★ <b>317.8</b></p>	<p>SOCAL APP CON <b>125.15 317.55</b></p>	<p>TOWER ★ <b>135.1 336.4</b></p>	<p>GND CON <b>118.0 360.675</b></p>	<p>CLNC DEL <b>128.4 288.25</b></p>	<p>PAR/ASR</p>
--------------------------------	---	---------------------------------------	---	---	----------------



EMERG SAFE ALT 100 NM 13,600



CATEGORY	A	B	C	D
S-36 *	760 3/4 741 (800-3/4)	760-1 741 (800-1)	760-1 7/8 741 (800-1 7/8)	
CIRCLING	NOT AUTHORIZED			



SAN DIEGO, CALIFORNIA 32°42'N-117°13'W NORTH ISLAND NAS (HALSEY FIELD) (KNZY)

Amdt 4 05NOV20

# TACAN RWY 36

SW-3, 30 DEC 2021 to 27 JAN 2022

SW-3, 30 DEC 2021 to 27 JAN 2022