

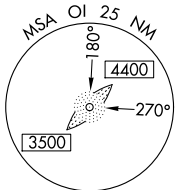
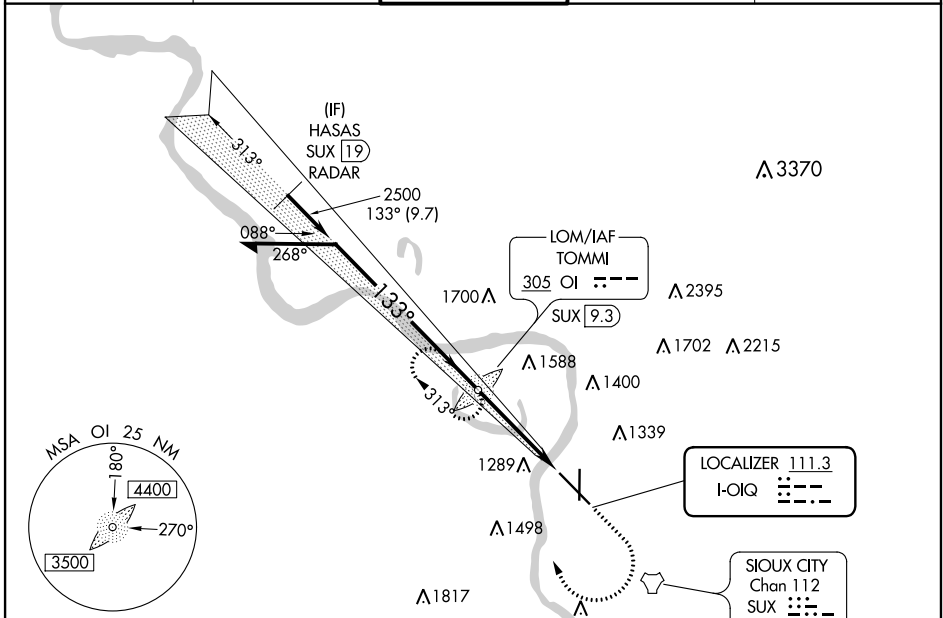
LOC I-OIG <b>111.3</b>	APP CRS <b>133°</b>	Rwy Idg <b>9002</b>
		TDZE <b>1095</b>
		Apt Elev <b>1098</b>

# ILS or LOC RWY 13

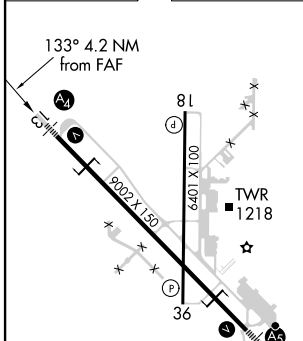
SIoux GATEWAY/BRIG GENERAL BUD DAY FLD (SUX)

ADF required. ADF or RADAR required for procedure entry.		MALS	MISSED APPROACH: Climb to 2000 then climbing right turn to 3100 direct TOMMI LOM/SUX 9.3 DME and hold, continue climb-in-hold to 3100	
⚠ For inop ALS, increase S-LOC 13 Cat E visibility to 1½ SM. Inop table does not apply to S-ILS 13.				

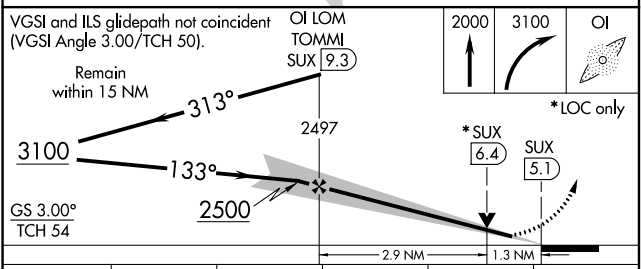
ATIS <b>119.45 270.8</b>	SIoux CITY APP CON* <b>124.6 307.0</b>	SIoux CITY TOWER* <b>118.7 (CTAF) 0 254.3</b>	GND CON <b>121.9 348.6</b>	UNICOM <b>122.95</b>
-----------------------------	---	--	-------------------------------	-------------------------



ELEV 1098	<b>D</b>	TDZE 1095
-----------	----------	-----------



REIL Rwy 18 <b>0</b>				
HIRL Rwy 13-31 <b>0</b>				
MIRL Rwy 18-36 <b>0</b>				
FAF to MAP 4.2 NM				
Knots	60	90	120	150
Min:Sec	4:12	2:48	2:06	1:41
				1:24



CATEGORY	A	B	C	D	E
S-ILS 13	1295/40 200 (200-¾)				
S-LOC 13	1560/40	465 (500-¾)	1560/60 465 (500-1¼)		
<b>C</b> CIRCLING	1640-1 542 (600-1)	1700-1 602 (700-1)	1700-1¾ 602 (700-1¾)	1800-2¼ 702 (800-2¼)	1940-3 842 (900-3)

NC-3, 30 DEC 2021 to 27 JAN 2022

NC-3, 30 DEC 2021 to 27 JAN 2022