


LOC I-SUX 109.3	APP CRS 313°	Rwy Idg TDZE Apt Elev	9002 1096 1098
---------------------------	------------------------	-----------------------------	---

ILS or LOC RWY 31

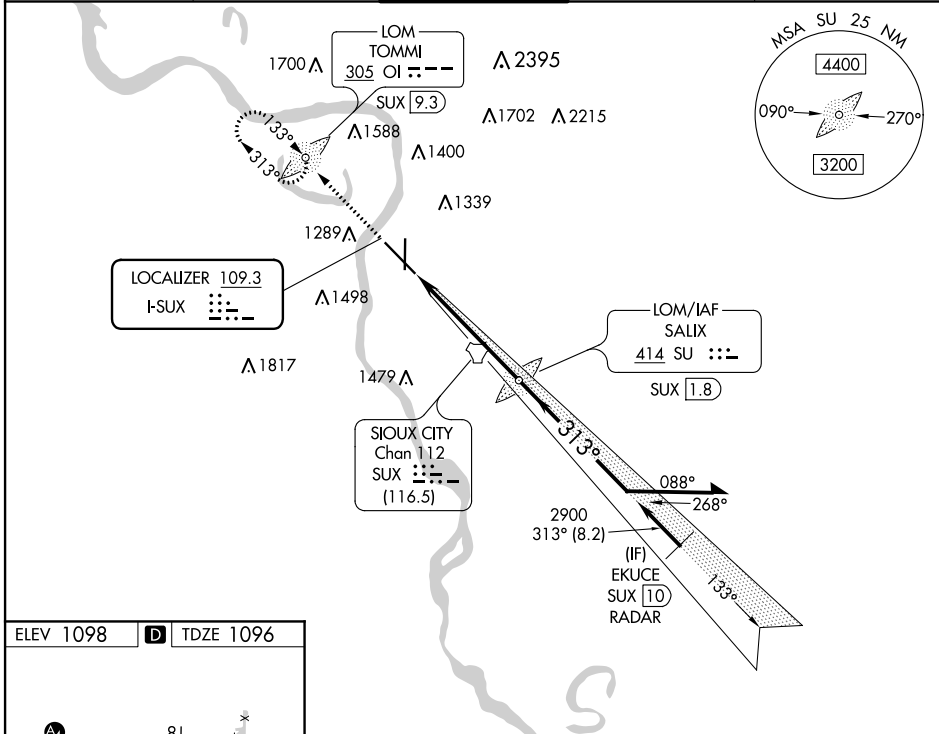
SIoux GATEWAY/BRIG GENERAL BUD DAY FLD (SUX)

ADF required. ADF or RADAR required for procedure entry.

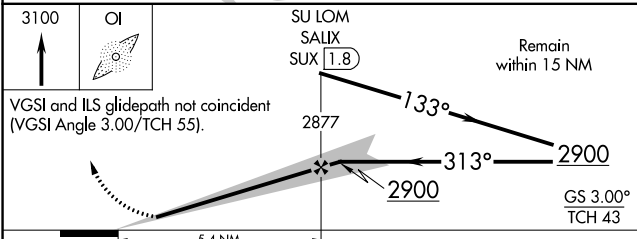
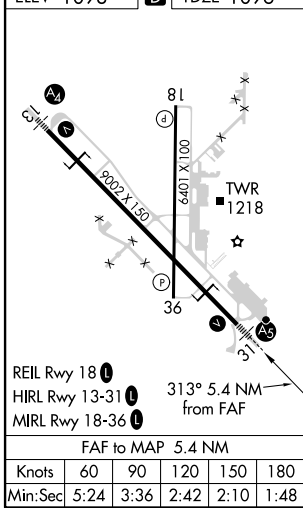
⚠ Autopilot coupled approach NA below 2025 MSL. For inop ALS, increase S-ILS 31 Cat E visibility to RVR 4000 and S-LOC 31 Cat C/D/E to 1 3/8 SM. *RVR 1800 authorized with use of FD or AP or HUD to DA.

MALSR  MISSED APPROACH: Climb to 3100 direct TOMMI LOM/SUX 9.3 DME and hold, continue climb-in-hold to 3100.

ATIS 119.45 270.8	SIoux CITY APP CON * 124.6 307.0	SIoux CITY TOWER * 118.7 (CTAF) 254.3	GND CON 121.9 348.6	UNICOM 122.95
-----------------------------	--	---	-------------------------------	-------------------------



ELEV 1098 **D** TDZE 1096



CATEGORY	A	B	C	D	E
S-ILS 31*	1296/24 200 (200-1/2)				
S-LOC 31	1560/24	464 (500-1/2)	1560/50 464 (500-1)		
C CIRCLING	1640-1 542 (600-1)	1700-1 602 (700-1)	1700-1 3/4 602 (700-1 3/4)	1800-2 1/4 702 (800-2 1/4)	1940-3 842 (900-3)

NC-3, 30 DEC 2021 to 27 JAN 2022

NC-3, 30 DEC 2021 to 27 JAN 2022