

DADES EIGHT ARRIVAL (RNAV) Transition Routes

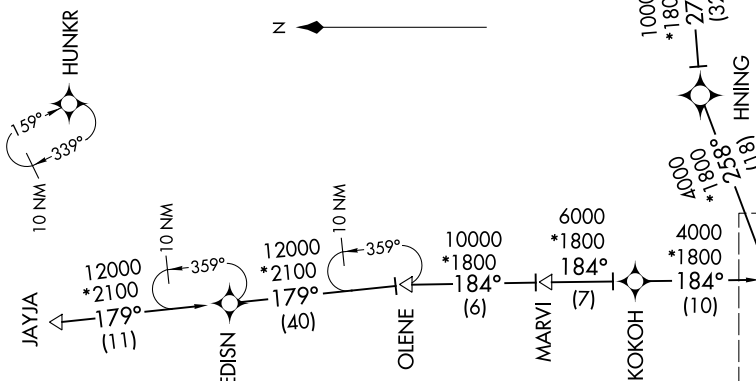
TAMPA, FLORIDA

SE-3, 30 DEC 2021 to 27 JAN 2022

TAMPA APP CON  
 135.5 279.6  
 KMCF ATIS  
 133.825 270.1  
 PIE ATIS  
 134.5  
 TPA D-ATIS  
 126.45

RNAV 1 - DME/DME/IRU or GPS.  
 RADAR required.

NOTE: Primary landing Rwys 1L/R, 19L/R.  
 NOTE: EDISN, BEAUX and NICK Transitions, ATC assigned only.  
 NOTE: Jet and turboprop aircraft only.



BEAUX TRANSITION (BEAUX.DADES8)  
 EDISN TRANSITION (EDISN.DADES8)  
 HIBAC TRANSITION (HIBAC.DADES8)  
 JAYJA TRANSITION (JAYJA.DADES8)  
 NICK TRANSITION (NICK.DADES8)

(NARRATIVE ON FOLLOWING PAGE)  
 (CONTINUED IN FOLLOWING PAGE)

See following page  
 for arrival routes.

NOTE: Chart not to scale.

SE-3, 30 DEC 2021 to 27 JAN 2022

DADES EIGHT ARRIVAL (RNAV) Transition Routes

TAMPA, FLORIDA