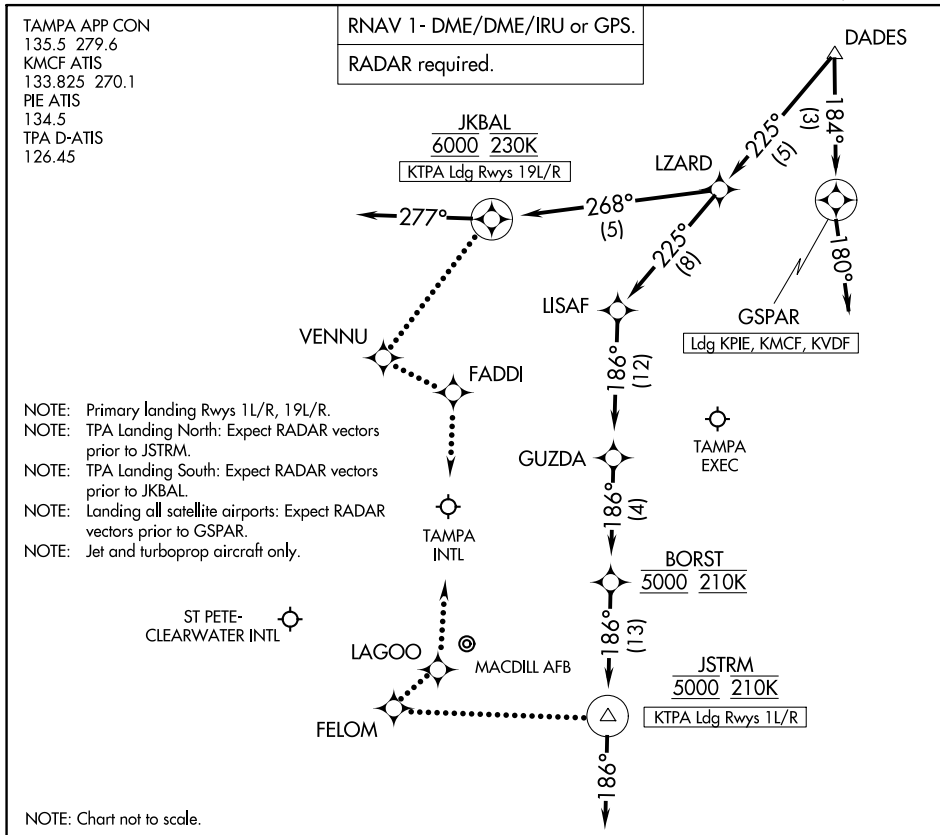


DADES EIGHT ARRIVAL (RNAV) Arrival Routes

TAMPA, FLORIDA



SE-3, 30 DEC 2021 to 27 JAN 2022

SE-3, 30 DEC 2021 to 27 JAN 2022

ARRIVAL ROUTE DESCRIPTION

LANDING KTPA RUNWAYS 1L/R: From DADES on track 225° to LZARD, then on track 225° to LISAF, then on track 186° to GUZDA, then on track 186° to cross BORST at 5000 and at 210K, then on track 186° to JSTRM at 5000 and at 210K, then on heading 186° or as assigned by ATC. Expect RADAR vectors to final approach course.

LANDING KTPA RUNWAYS 19L/R: From DADES on track 225° to LZARD, then on track 268° to JKBAL at 6000 and at 230K, then on heading 277° or as assigned by ATC. Expect RADAR vectors to final approach course.

LANDING KPIE/KMCF/KVDF: From DADES on track 184° to GSPAR, then on track 180°. Expect RADAR vectors to final approach course.

LOST COMMUNICATIONS

KTPA LANDING NORTH: Continue track to FELOM, proceed direct LAGOO, conduct Rwy 1L approach.

KTPA LANDING SOUTH: Continue track to VENNU, proceed direct FADDI, conduct Rwy 19R approach.