

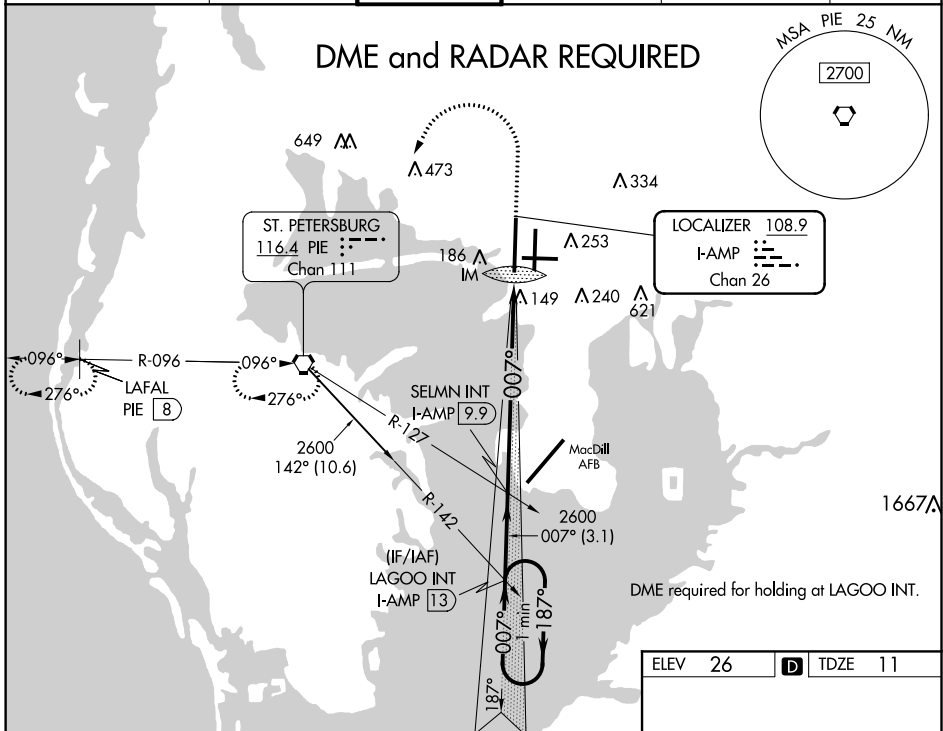
LOC/DME I-AMP 108.9 Chan 26	APP CRS 007°	Rwy Idg 10800 TDZE 11 Apt Elev 26
---	------------------------	--

ILS RWY 1L (SA CAT I)

TAMPA INTL (TPA)

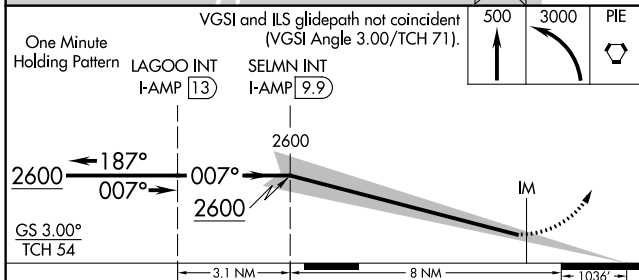
Simultaneous approach authorized. Requires specific OPSPEC, MSPEC, or LOA approval and use of HUD to DH.	ALSIF-2	MISSED APPROACH: Climb to 500 then climbing left turn to 3000 direct PIE VORTAC and hold, continue climb-in-hold to 3000 (TACAN aircraft climb to 500 then climbing left turn to 4000 direct PIE VORTAC then on PIE VORTAC R-276 to LAFAL/PIE 8 DME and hold W, RT, 096 inbound)

ARR 126.45	D-ATIS 128.475	DEP 128.475	TAMPA APP CON 118.5 307.175	TAMPA TOWER 119.5 269.4	GND CON 121.7 269.4	CLNC DEL 133.6	CPDLC
----------------------	--------------------------	-----------------------	---------------------------------------	-----------------------------------	-------------------------------	--------------------------	-------

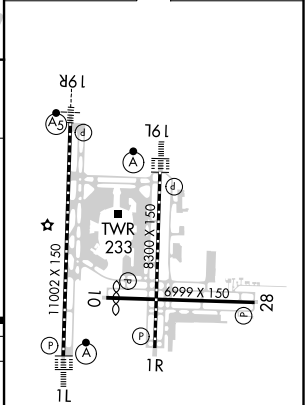


SE-3, 30 DEC 2021 to 27 JAN 2022

SE-3, 30 DEC 2021 to 27 JAN 2022



ELEV 26		TDZE 11
---------	--	---------



CATEGORY	A	B	C	D
S-ILS 1L	RA 155/14 150 DA 161			

SA CATEGORY I ILS - SPECIAL AIRCREW & AIRCRAFT CERTIFICATION REQUIRED

REIL Rwy 1R
TDZ/CL Rwy 1L and 19L
HIRL Rwy 1L-19R, 1R-19L, and 10-28