

KNOST ONE DEPARTURE (RNAV)

SE-3, 30 DEC 2021 to 27 JAN 2022

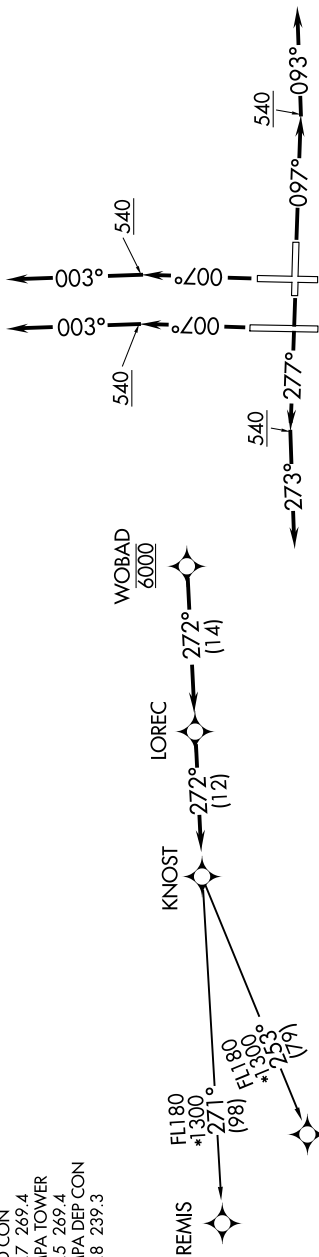
D-ATIS DEP
128.475
CLNC DEL
133.6
GPDIRC
GND CON
121.7 269.4
TAMPA TOWER
119.5 269.4
TAMPA DEP CON
118.8 239.3

TAKEOFF MINIMUMS

Rwys 19L/R: NA - ATC.

Rwys 1L/R, 10, 28: Standard with minimum climb of 500' per NM to 540.

**TOP ALTITUDE:
6000**



DEPARTURE ROUTE DESCRIPTION

TAKEOFF RUNWAYS 1L/R: Climb on heading 007° to 540, then on heading 003° or as assigned by ATC, for vectors to cross WOBAD at 6000 thence. . . .

TAKEOFF RUNWAY 10: Climb on heading 097° to 540, then on heading 093° or as assigned by ATC, for vectors to cross WOBAD at 6000 thence. . . .

TAKEOFF RUNWAY 28: Climb on heading 277° to 540, then on heading 273° or as assigned by ATC, for vectors to cross WOBAD at 6000 thence. . . .

. . . on track 272° to LOREC, then on track 272° to KNOST. Expect clearance to filed altitude within ten minutes after departure.

CIGAR TRANSITION (KNOST1.CIGAR)
REMIS TRANSITION (KNOST1.REMIS)

- NOTE: RNAV 1.
- NOTE: Jets only.
- NOTE: RADAR required.
- NOTE: GPS required.

NOTE: Chart not to scale.