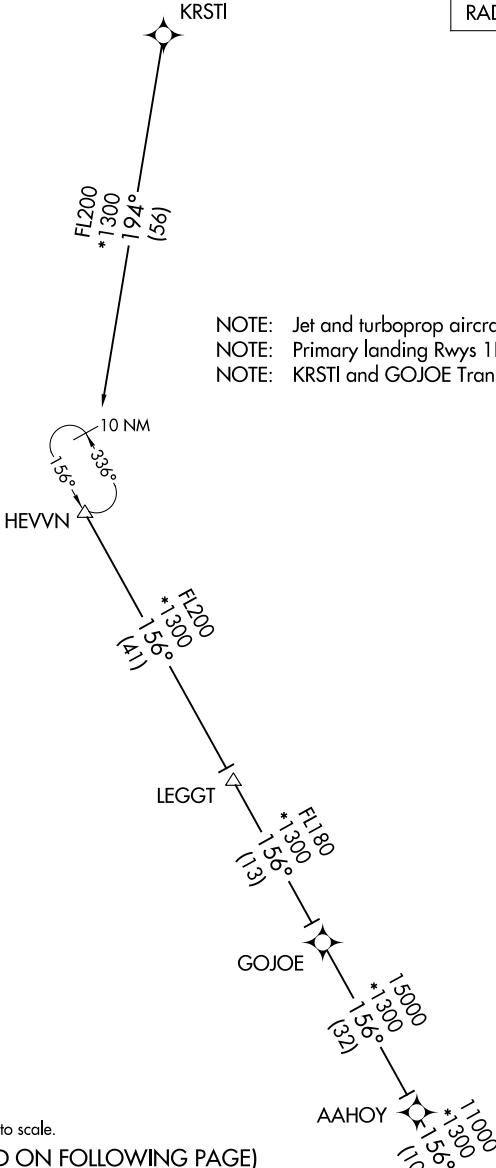


TAMPA APP CON
118.8 239.3
KMCF ATIS
133.825 270.1
LAL ATIS
118.025
TPA D-ATIS
126.45

RNAV 1 - DME/DME/IRU or GPS.
RADAR required.



NOTE: Jet and turboprop aircraft only.
NOTE: Primary landing Rwy's 1L/R, 19L/R.
NOTE: KRSTI and GOJOE Transitions, ATC assigned only.

NOTE: Chart not to scale.

(CONTINUED ON FOLLOWING PAGE)

GOJOE TRANSITION (GOJOE.MAATY2)
HEVNV TRANSITION (HEVNV.MAATY2)
KRSTI TRANSITION (KRSTI.MAATY2)

See following page for arrival routes.

SE-3, 30 DEC 2021 to 27 JAN 2022

SE-3, 30 DEC 2021 to 27 JAN 2022