

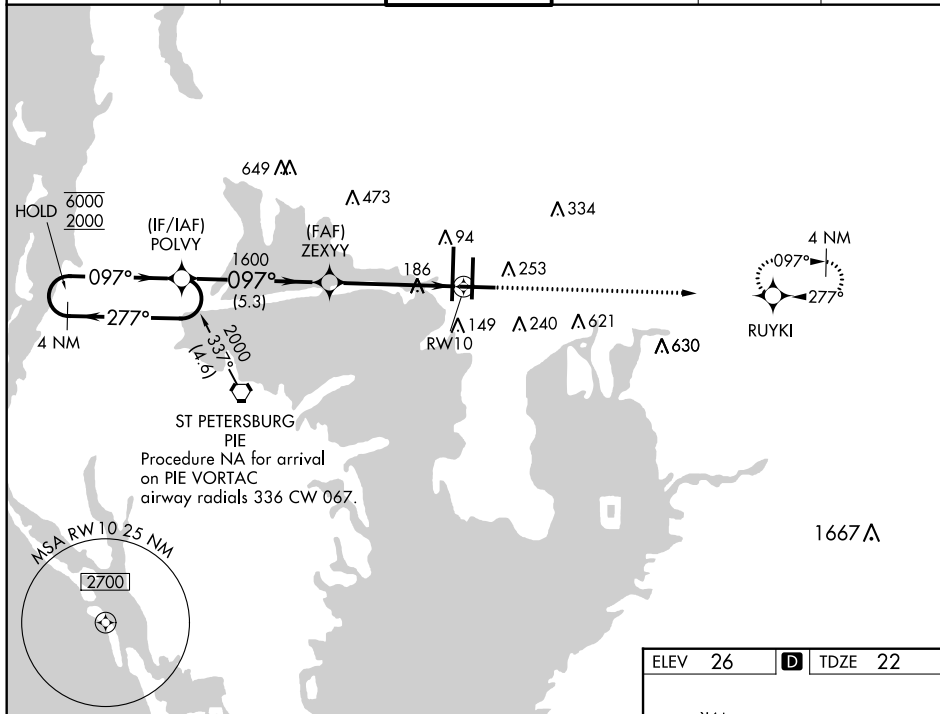
WAAS CH 77720 W10A	APP CRS 097°	Rwy Idg TDZE 22 Apt Elev 26	6501
--	------------------------	---	-------------

RNAV (GPS) RWY 10

TAMPA INTL (TPA)

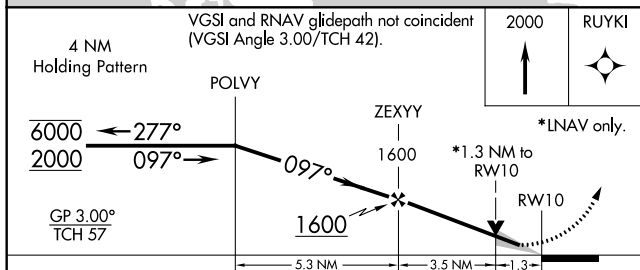
RNP APCH.	MISSED APPROACH: Climb to 2000 direct RUYKI and hold.		
<p>▼ For uncompensated Baro-VNAV systems, LNAV/VNAV NA below 2°C or above 54°C.</p>			

ARR	D-ATIS	DEP	TAMPA APP CON	TAMPA TOWER	GND CON	CLNC DEL	CPDLC
126.45		128.475	118.5 307.175	119.5 269.4	121.7 269.4	133.6	

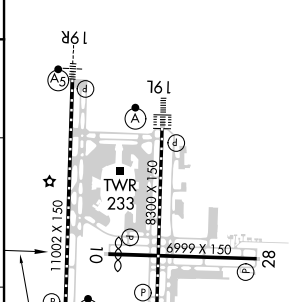


SE-3, 30 DEC 2021 to 27 JAN 2022

SE-3, 30 DEC 2021 to 27 JAN 2022



ELEV 26	D TDZE 22
---------	------------------



CATEGORY	A	B	C	D
LPV DA		272-1	250 (300-1)	
LNAV/VNAV DA		436-1 $\frac{3}{8}$	414 (500-1 $\frac{3}{8}$)	
LNAV MDA	480-1 458 (500-1)		480-1 $\frac{3}{8}$ 458 (500-1 $\frac{3}{8}$)	
C CIRCLING	560-1 534 (600-1)		680-1 $\frac{3}{4}$ 654 (700-1 $\frac{3}{4}$)	980-3 954 (1000-3)

REIL Rwy 1R
TDZ/CL Rws 1L and 19L
HIRL Rws 1L-19R, 1R-19L, and 10-28