

WAAS CH 72617 W24A	APP CRS 237°	Rwy Idg TDZE Apt Elev	4479 374 374
--	------------------------	-----------------------------	---

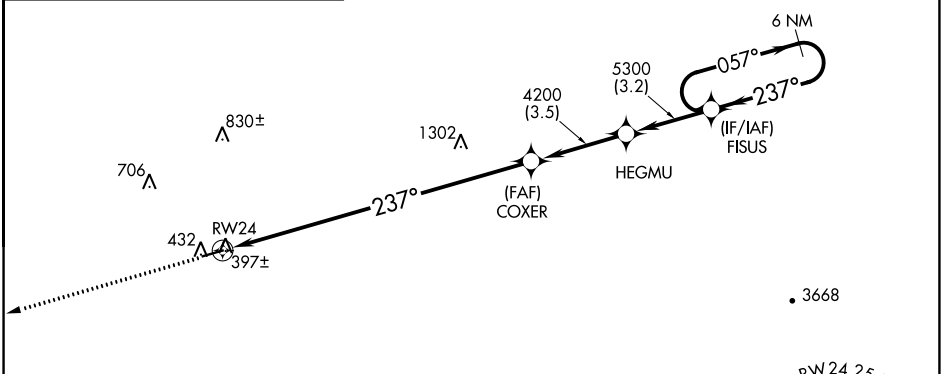
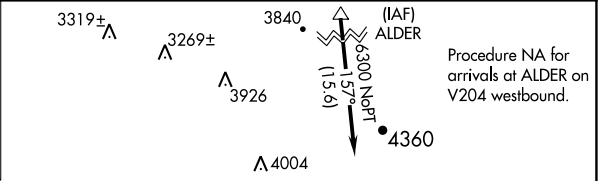
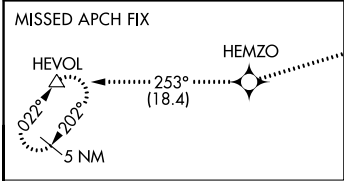
RNAV (GPS) RWY 24

ED CARLSON MEML FLD - SOUTH LEWIS COUNTY (TDO)

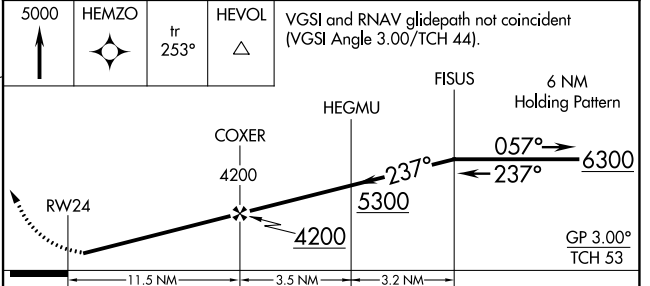
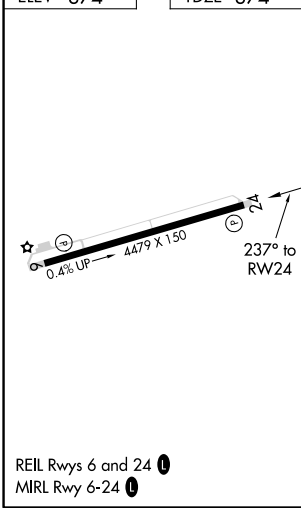
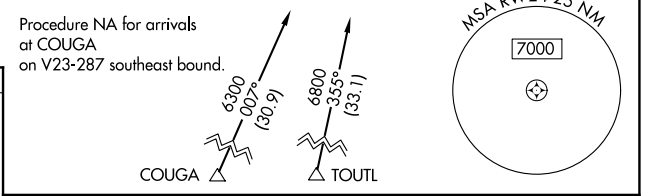
NA Baro-VNAV NA. DME/DME RNP-0.3 NA. Helicopter visibility reduction below 1 SM not authorized. Use Chehalis altimeter setting, when not received use Kello altimeter setting and increase all DA/MDA 40 feet and increase LPV visibility all Cats ¼ mile. Procedure NA at night.

MISSED APPROACH: Climb to 5000 direct HEMZO and on track 253° to HEVOL and hold.

SEATTLE CENTER 124.2 317.6	CTAF 122.9
--------------------------------------	----------------------



ELEV 374	TDZE 374
----------	----------



CATEGORY	A	B	C	D
LPV DA	685-1 311 (400-1)			
LNAV/VNAV DA	802-1½ 428 (500-1½)			

NW-1, 30 DEC 2021 to 27 JAN 2022

NW-1, 30 DEC 2021 to 27 JAN 2022