

WAAS CH 58017 W06A	APP CRS 057°	Rwy Idg TDZE Apt Elev	4479 367 374
--	------------------------	-----------------------------	---

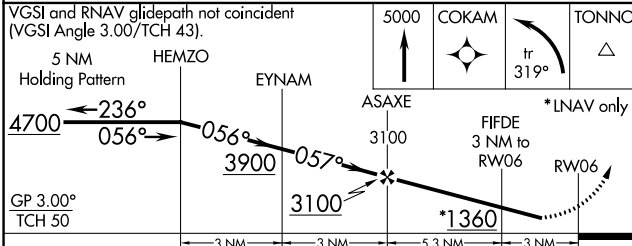
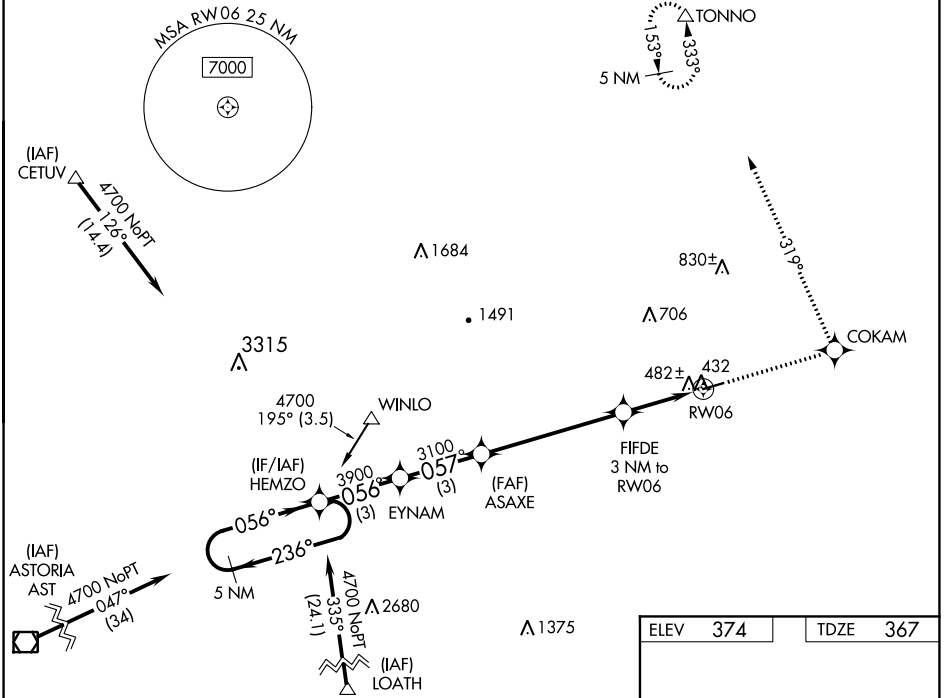
RNAV (GPS) RWY 6

ED CARLSON MEML FLD - SOUTH LEWIS COUNTY (TDO)

NA Circling NA at night. Baro-VNAV NA. DME/DME RNP-0.3 NA. Visibility reduction by helicopters NA. Use Chehalis altimeter setting, when not received use Kelso altimeter setting and increase all DA/MDA 40 feet and increase LNAV/VNAV visibility all Cats ¼ mile.

MISSED APPROACH: Climb to 5000 direct COKAM and left turn on track 319° to TONNO and hold, continue climb-in-hold to 5000.

SEATTLE CENTER 124.2 317.6	CTAF 122.9
--------------------------------------	----------------------



ELEV	374	TDZE	367
------	-----	------	-----

VGSI and RNAV glidepath not coincident (VGSI Angle 3.00/TCH 43).

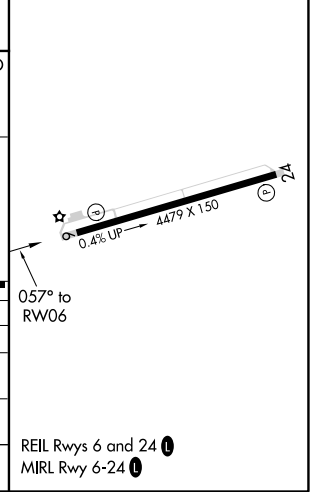
5 NM Holding Pattern

GP 3.00° TCH 50

*LNAV only

3 NM, 3 NM, 5.3 NM, 3 NM

CATEGORY	A	B	C	D
LPV DA		767-1½	400 (400-1½)	
LNAV/VNAV DA		813-1½	446 (500-1½)	
LNAV MDA	800-1	433 (500-1)	800-1¼ 433 (500-1¼)	800-1½ 433 (500-1½)
CIRCLING	900-1	526 (600-1)	900-1½ 526 (600-1½)	940-2 566 (600-2)



REIL Rwy 6 and 24
MIRL Rwy 6-24

RNAV (GPS) RWY 6

NW-1, 30 DEC 2021 to 27 JAN 2022

NW-1, 30 DEC 2021 to 27 JAN 2022