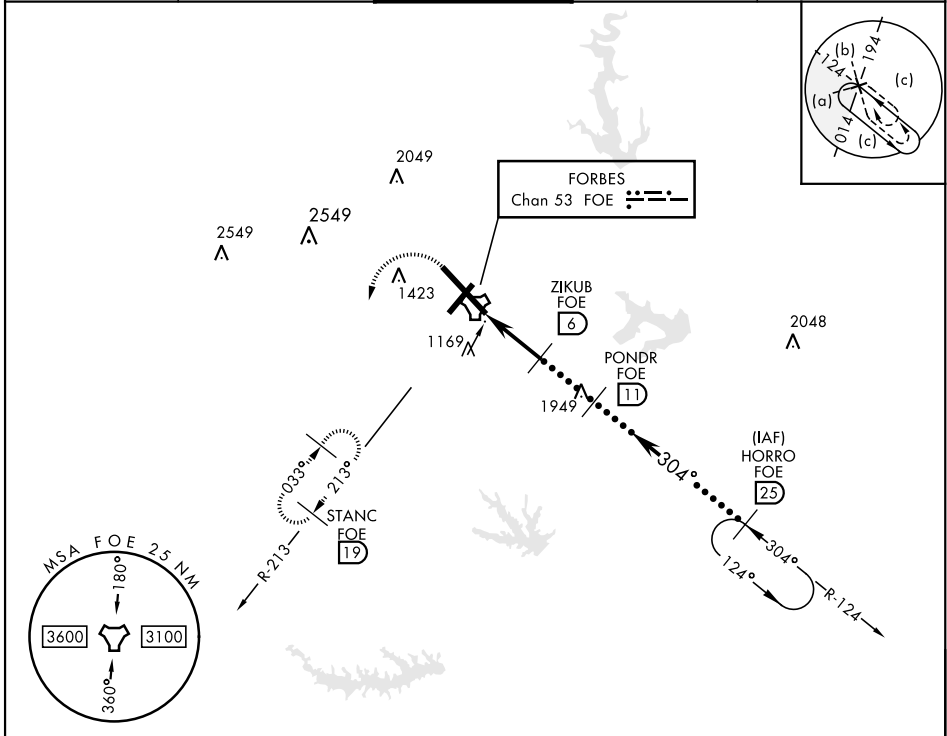


HI-TACAN RWY 31

TACAN FOE Chan 53	APCH CRS 304°	Rwy ldg 12,803 TDZE 1037 Arprt Elev 1078	AL-424 [USAF]	TOWEKA RGNL (KFOE)
▼ * For ALS inop, increase CAT CDE vis to 1 3/8.			MALSR 	MISSED APPROACH: Climbing left turn to 3000 via heading 190° and FOE TACAN R-213 to STANC/19° DME and hold.

ATIS 128.25	KANSAS CITY CENTER 123.8 343.7	FORBES TOWER ★ 120.8 (CTAF) 340.2	GND CON 118.425 275.8	UNICOM 122.95
-----------------------	--	---	---------------------------------	-------------------------



EMERG SAFE ALT 100 NM 3600

3000 FOE R-213 STANC FOE 19 HORRO R-124 25 FL 250 10,000 ZIKUB 6 POND R 11 TACAN 2.1 BUMKE 0.8 5.2 NM 2700 3000 2.90° TCH 58	ELEV 1078 TDZE 1037 TWR 1208 1200 7002 x 150 12,803 x 150 304° to TACAN MRL Rwy 3-21 REIL Rwy 3, 13, and 21 HIRL Rwy 13-31
CATEGORY C D E S-31 * 1520/50 483 (500-1) CIRCLING 1580-1 1/2 1700-2 1720-2 1/4 502 (600-1 1/2) 622 (700-2) 642 (700-2 1/4)	

HI-TACAN RWY 31

NC-2, 30 DEC 2021 to 27 JAN 2022

NC-2, 30 DEC 2021 to 27 JAN 2022