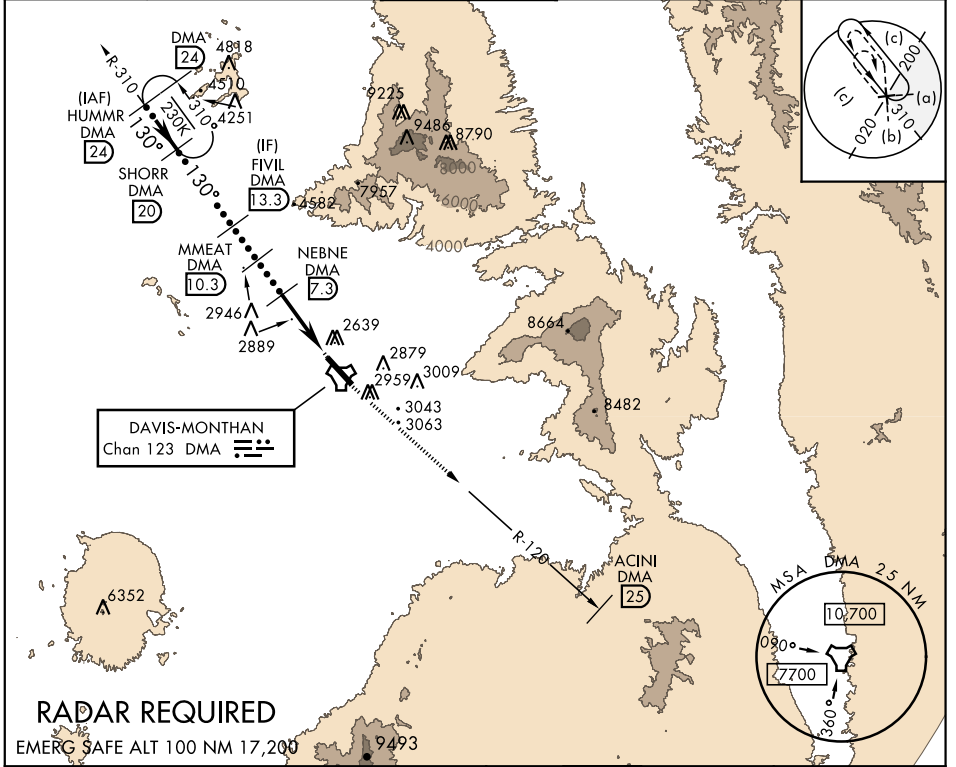


HI-TACAN Z RWY 12

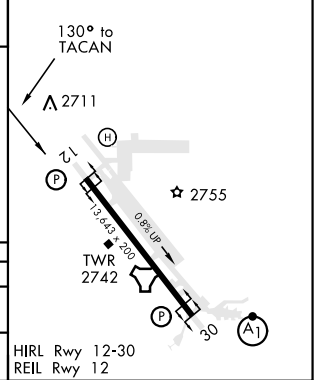
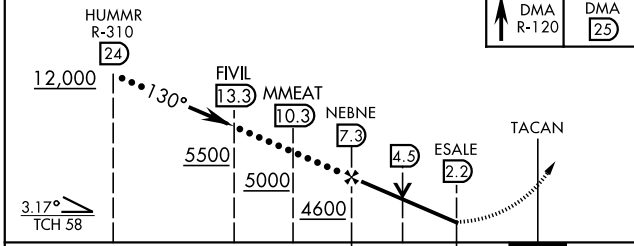
TACAN DMA Chan 123	APCH CRS 130°	Rwy ldg 13,643 TDZE 2615 Arprt Elev 2704	JAL-429 [USAF]	DAVIS-MONTHAN AFB (KDMA)
------------------------------	-------------------------	---	----------------	--------------------------

▼ * Circling not authorized S of Rwy 12-30. MISSED APPROACH: Climbing to 7900 intercept DMA TACAN R-120 to ACINI. Expect RADAR vectors.

ATIS★ 270.1	TUCSON APP CON 125.1 269.55 (090°- 285°) 119.4 318.1 (286°- 089°)	DAVIS-MONTHAN TOWER 118.85 253.5	GND CON 121.8 275.8	CLNC DEL 121.8 275.8
-----------------------	---	--	-------------------------------	--------------------------------



7900 DMA R-120	ACINI DMA (25)	ELEV 2704	TDZE 2615
-------------------	-------------------	-----------	-----------



CATEGORY	C	D	E
S-12	3600-3	985 (900-3)	
CIRCLING*	3600-3	896 (900-3)	

TUCSON, ARIZONA 32°10'N-110°53'W DAVIS-MONTHAN AFB (KDMA)

Amdt 8 28MAR19

HI-TACAN Z RWY 12

SW-4, 30 DEC 2021 to 27 JAN 2022

SW-4, 30 DEC 2021 to 27 JAN 2022