

# HI-TACAN Z RWY 30

TACAN DMA Chan <b>123</b>	APCH CRS <b>299°</b>	Rwy ldg <b>13,643</b> TDZE <b>2704</b> Arprt Elev <b>2704</b>
------------------------------	-------------------------	---

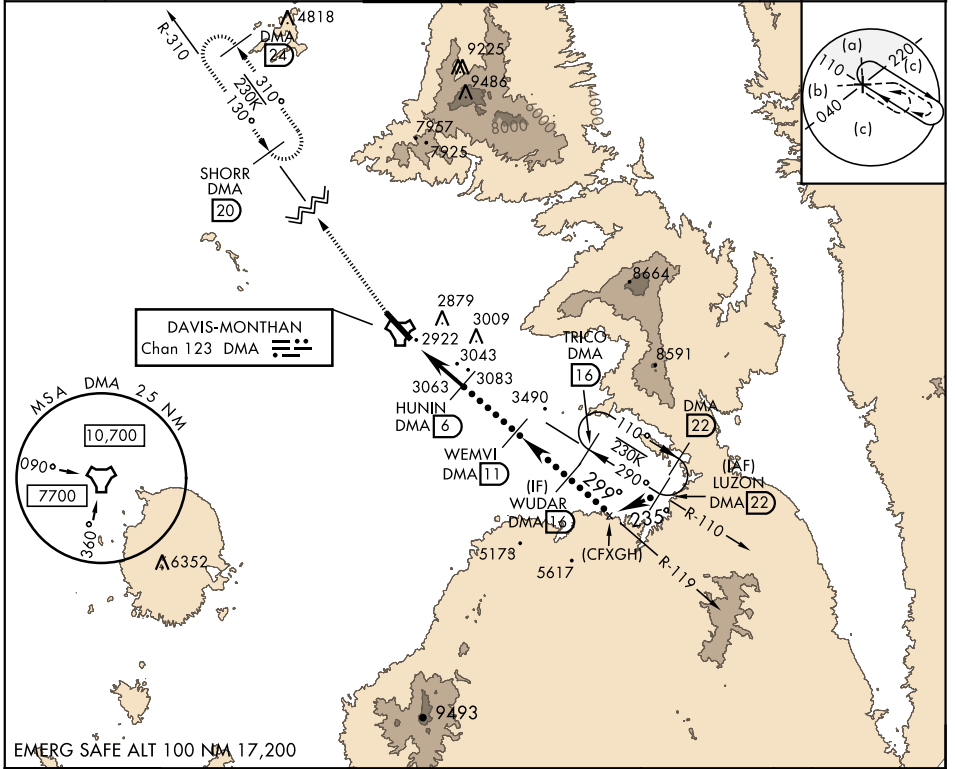
JAL-429 [USAF]

DAVIS-MONTHAN AFB (KDMA)

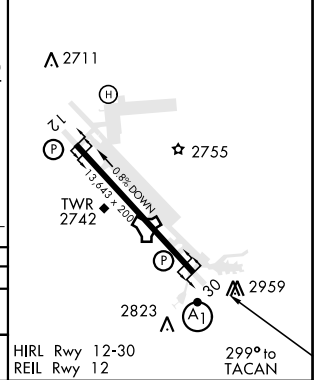
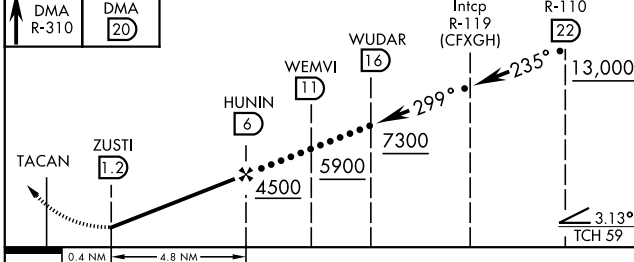
**⚠** \* When ALS inop, increase vis to 1 1/4 miles.  
**\*\*** Circling not authorized S of Rwy 12-30.

ALS-F1 <b>(A1)</b>	MISSED APPROACH: Climb to 7200, intercept DMA TACAN R-310 to SHORR and hold.
-----------------------	--

ATIS ★ <b>270.1</b>	TUCSON APP CON 066°-274° <b>119.4 318.1</b> 275°-065° <b>125.1 269.55</b>	DAVIS-MONTHAN TOWER <b>118.85 253.5</b>	GND CON <b>121.8 275.8</b>	CLNC DEL <b>121.8 275.8</b>
------------------------	---	--	-------------------------------	--------------------------------



7200 DMA R-310	SHORR DMA 20	ELEV 2704	TDZE 2704
-------------------	-----------------	-----------	-----------



CATEGORY	C		D		E
S-30 *	3340-1 3/8		636	(700-1 3/8)	
<b>C</b> CIRCLING **	3340-1 3/8 636 (700-1 3/8)		3360-2 656 (700-2)	3440-2 1/2 736 (800-2 1/2)	

# HI-TACAN Z RWY 30

SW-4, 30 DEC 2021 to 27 JAN 2022

SW-4, 30 DEC 2021 to 27 JAN 2022