

ILS or LOC Y RWY 12

LOC I- AFB 109.3	APCH CRS 125°	Rwy Ldg 13,643 TDZE 2615 Arprt Elev 2704
-----------------------------------	-------------------------	---

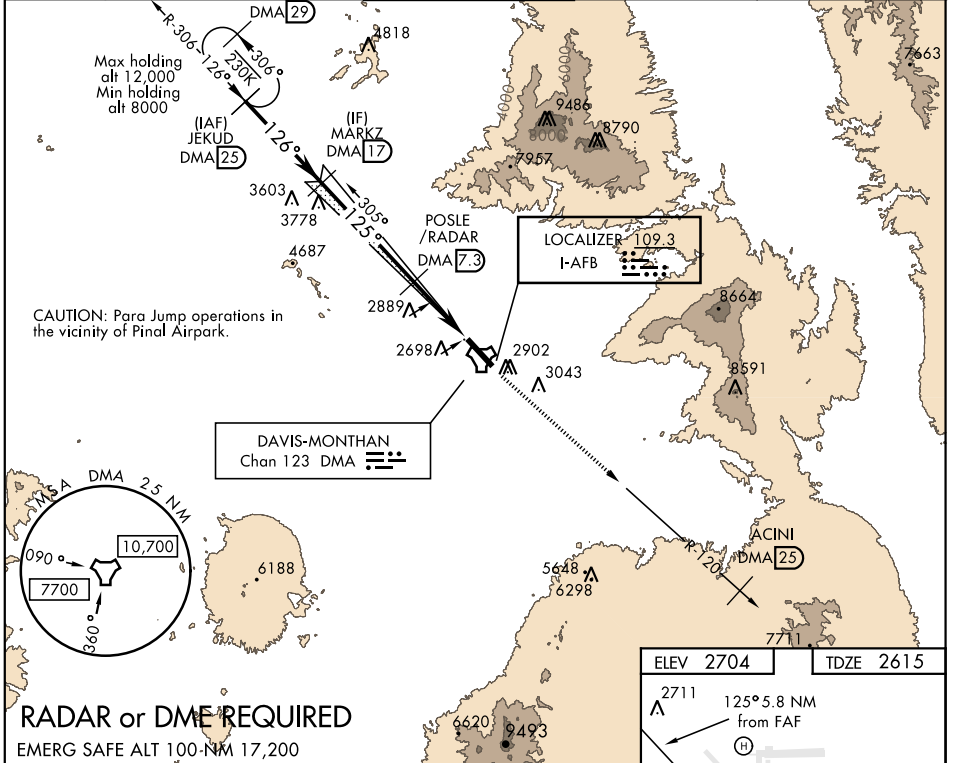
AL-429 [USAF]

DAVIS-MONTHAN AFB (KDMA)

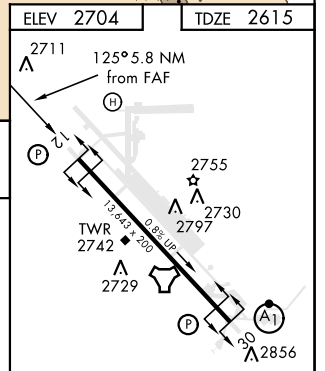
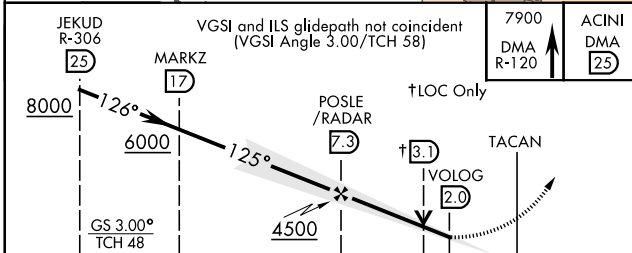
*** Circling not authorized S of Rwy 12-30.**

MISSED APPROACH: Climbing to 7900 intercept DMA TACAN R-120 to ACINI. Expect RADAR vectors.

ATIS★ 270.1	TUCSON APP CON 066°-274° 119.4 318.1 275°-065° 125.1 269.55	DAVIS-MONTHAN TOWER 118.85 253.5	GND CON 121.8 275.8	CLNC DEL 121.8 275.8
-----------------------	---	--	-------------------------------	--------------------------------



RADAR or DME REQUIRED
EMERG SAFE ALT 100-NM 17,200



CATEGORY	A	B	C	D	E
S-ILS 12	2865/40 250 (200-¾)				
S-LOC 12	3160/55 545 (500-1)	3160-1½ 545 (500-1½)			
* CIRCLING	3220-1 516 (600-1)	3240-1 536 (600-1)	3320-1¾ 616 (700-1¾)	3360-2 656 (700-2)	3440-2½ 736(800-2½)

REIL Rwy 12 HIRL Rwy 12-30					
FAF to MAP 5.3 NM					
Knots	60	90	120	150	180
Min:Sec	5:18	3:32	2:39	2:07	1:46

ILS or LOC Y RWY 12

SW-4, 30 DEC 2021 to 27 JAN 2022

SW-4, 30 DEC 2021 to 27 JAN 2022