

TACAN Y RWY 12

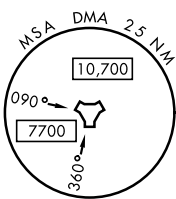
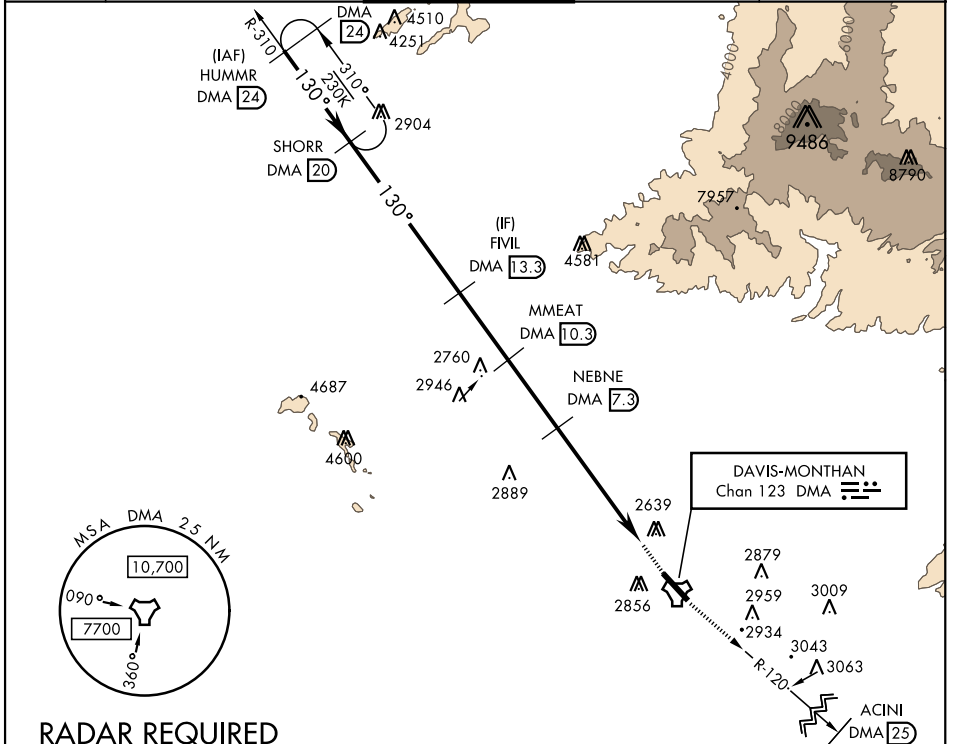
DAVIS-MONTHAN AFB (KDMA)

TACAN DMA Chan 123	APCH CRS 130°	Rwy Idg 13,643 TDZE 2615 Arpt Elev 2704
------------------------------	-------------------------	--

AL-429 [USAF]

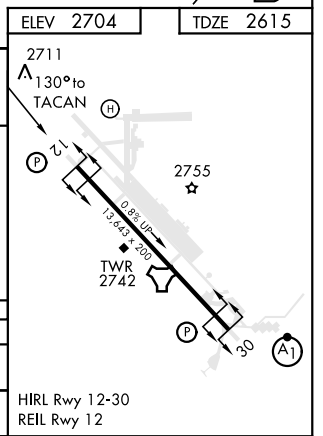
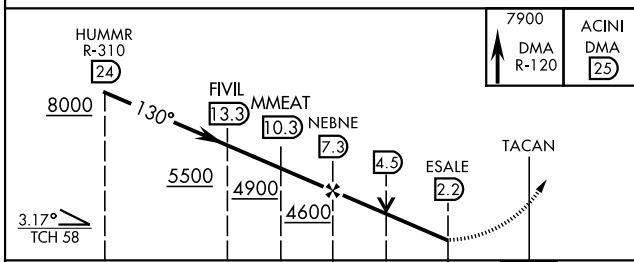
⚠ *Circling not authorized S of Rwy 12-30. MISSED APPROACH: Climbing to 7900 intercept DMA TACAN R-120 to ACINI. Expect RADAR vectors.

ATIS ★ 270.1	TUCSON APP CON 090°-285° 125.1 269.55 286°-089° 119.4 318.1	DAVIS-MONTHAN TOWER 118.85 253.5	GND CON 121.8 275.8	CLNC DEL 121.8 275.8
------------------------	---	--	-------------------------------	--------------------------------



RADAR REQUIRED

EMERG SAFE ALT 100 NM 17,200



CATEGORY	A	B	C	D	E
S-12	3600/60 985 (900-1¼)	3600-1½ 985 (900-1½)	3600-3	985	(900-3)
CIRCLING*	3600-1¼ 896 (900-1¼)	3600-1½ 896 (900-1½)		3600-3 896 (900-3)	

TUCSON, ARIZONA 32°10'N-110°53'W DAVIS-MONTHAN AFB (KDMA)

Amdt 8 28MAR19

TACAN Y RWY 12

SW-4, 30 DEC 2021 to 27 JAN 2022

SW-4, 30 DEC 2021 to 27 JAN 2022