

|                           |                        |  |
|---------------------------|------------------------|--|
| LOC I-ALW<br><b>111.7</b> | APP CRS<br><b>196°</b> | Rwy ldg<br>TDZE<br>Apt Elev<br><b>6527</b><br><b>1194</b><br><b>1194</b> |
|---------------------------|------------------------|--|

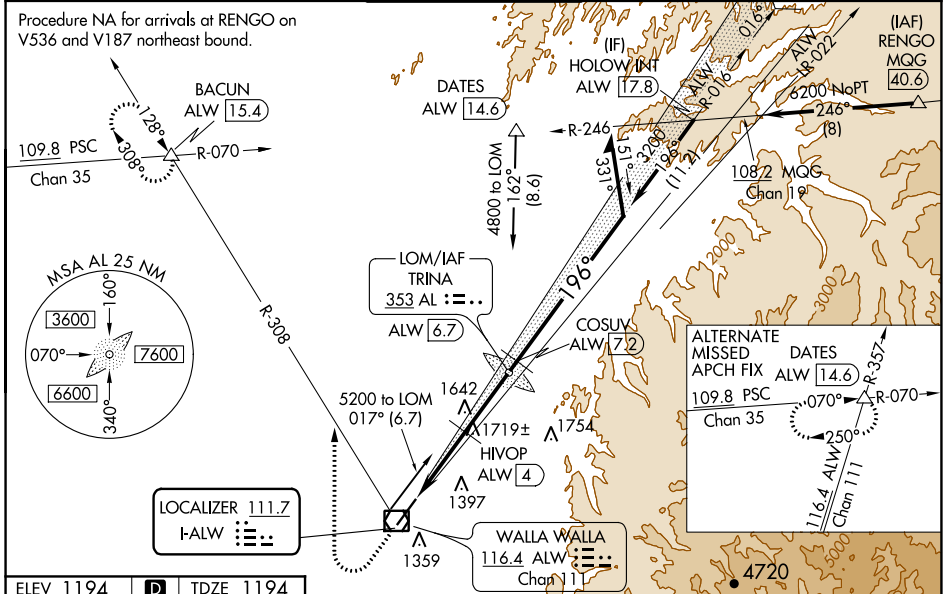
# ILS Y or LOC RWY 20

WALLA WALLA RGNL (ALW)

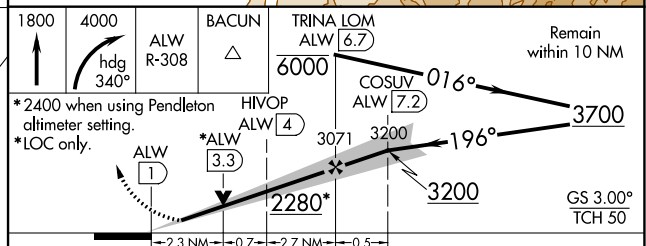
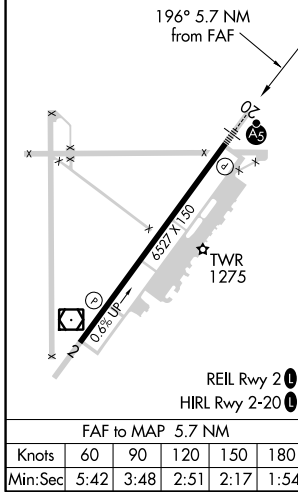
**▽** VDP NA when using Pendleton altimeter setting. When local altimeter setting not received, use Pendleton altimeter setting and increase all DA and all MDA 120 feet. Increase S-ILS 20 visibility all Cats to RVR 3200, S-LOC 20 Cat A/C/D visibility ½ mile. Increase HIVOP DME FIX S-LOC 20 Cat A/C/D visibility ¼ mile, and Circling Cat A and C visibility ¼ mile. For inoperative MALSR, when using Pendleton altimeter setting increase S-ILS 20 all Cats visibility to RVR 5500. For inoperative MALSR increase HIVOP DME FIX minimums S-LOC 20 Cat C/D visibility ¾ mile. Inoperative table does not apply to S-LOC 20 Cat A, C, and D visibility when using Pendleton altimeter setting. # RVR 1800 authorized with use of FD or AP or HUD to DA.

**MALSRS**  
 MISSED APPROACH: Climb to 1800 then climbing right turn to 4000 on heading 340° and ALW VOR/DME R-308 to BACUN INT/ALW 15.4 DME and hold.

|                        |   |  |                               |                         |
|------------------------|---|--|-------------------------------|-------------------------|
| ASOS<br><b>135.875</b> | CHINOOK APP CON *<br><b>133.15 379.15</b> | WALLA WALLA TOWER *<br><b>118.5 (CTAF) 289.4</b> | GND CON<br><b>121.6 289.4</b> | UNICOM<br><b>122.95</b> |
|------------------------|---|--|-------------------------------|-------------------------|



|           |          |           |
|-----------|----------|-----------|
| ELEV 1194 | <b>D</b> | TDZE 1194 |
|-----------|----------|-----------|



| CATEGORY               | A                         | B                         | C                         | D                       |
|------------------------|---------------------------|---------------------------|---------------------------|-------------------------|
| S-ILS 20 #             |                           | 1394/24                   | 200 (200-½)               |                         |
| S-LOC 20               | 2280/40<br>1086 (1100-¾)  | 2280/55<br>1086 (1100-1)  | 2280-2½<br>1086 (1100-2½) |                         |
| <b>C</b> CIRCLING      | 2280-1¼<br>1086 (1100-1¼) | 2280-1½<br>1086 (1100-1½) | 2280-3<br>1086 (1100-3)   | 2300-3<br>1106 (1200-3) |
| HIVOP DME FIX MINIMUMS |                           |                           |                           |                         |
| S-LOC 20               | 1980/24<br>786 (800-½)    | 1980/40<br>786 (800-¾)    | 1980-1¾<br>786 (800-1¼)   |                         |
| <b>C</b> CIRCLING      | 1980-1<br>786 (800-1)     | 1980-1¼<br>786 (800-1¼)   | 2120-2¾<br>926 (1000-2¾)  | 2300-3<br>1106 (1200-3) |