

VOR/DME ALW <b>116.4</b> Chan 111	APP CRS <b>197°</b>	Rwy Idg <b>6527</b> TDZE <b>1194</b> Apt Elev <b>1194</b>
---	------------------------	---

# VOR RWY 20

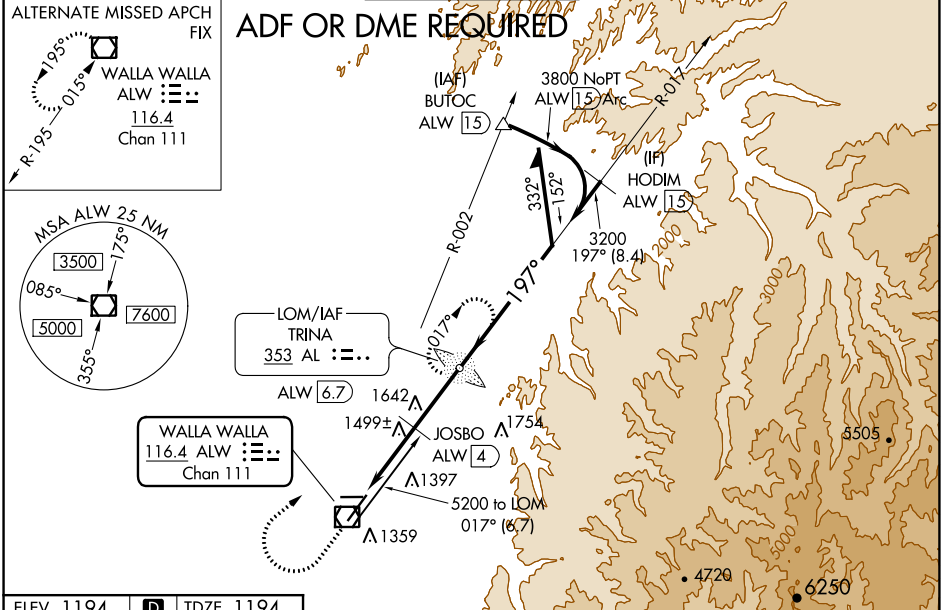
WALLA WALLA RGNL (ALW)

**ADF required.** VDP NA with Pendleton altimeter setting. When local altimeter setting not received, use Pendleton altimeter setting and increase all MDA 120 feet. Increase S-20 visibility Cat B ¼ mile, Cat C and D ½ mile. Increase JOSBO fix minimums S-20 visibility Cat C and D ¼ mile, Circling visibility Cat A and C ¼ mile, and Cat B ½ mile.

**MALS**

**MISSED APPROACH:** Climb to 2300 then climbing right turn to 4000 direct TRINA LOM and hold.

ASOS <b>135,875</b>	CHINOOK APP CON ★ <b>133.15 379.15</b>	WALLA WALLA TOWER ★ <b>118.5 (CTAF) 289.4</b>	GND CON <b>121.6 289.4</b>	UNICOM <b>122.95</b>
------------------------	---	--	-------------------------------	-------------------------



ELEV 1194	<b>D</b>	TDZE 1194
-----------	----------	-----------

197° to VOR/DME

2300 4000 AL

VGSI and descent angles not coincident (VGSI Angle 3.00/TCH 50). TRINA AL LOM ALW 6.7

Remain within 10 NM

\*2240 when using Pendleton altimeter setting.

JOSBO ALW 4

ALW VOR/DME ALW 2.6

3.26° TCH 50

2120\*

3200

1.6 NM 1.4 NM 2.7 NM

CATEGORY	A	B	C	D
S-20	2120/40	926 (1000-¾)	2120-2	926 (1000-2)
<b>C</b> CIRCLING	2120-1¼	926 (1000-1¼)	2120-3 926 (1000-3)	2240-3 1046 (1100-3)
JOSBO FIX MINIMUMS (DME REQUIRED)				
S-20	1760/24	566 (600-½)	1760-1¼	566 (600-1¼)
<b>C</b> CIRCLING	1760-1 566 (600-1)	1820-1 626 (700-1)	2080-2¾ 886 (900-2¾)	2240-3 1046 (1100-3)

REIL Rwy 20  
HIRL Rwy 2-20

NW-1, 30 DEC 2021 to 27 JAN 2022

NW-1, 30 DEC 2021 to 27 JAN 2022