

RNAV (GPS) RWY 30

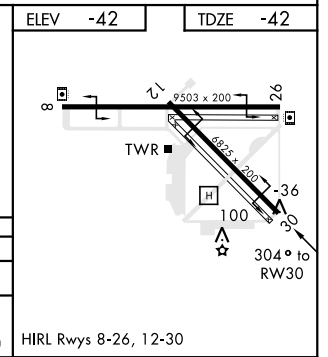
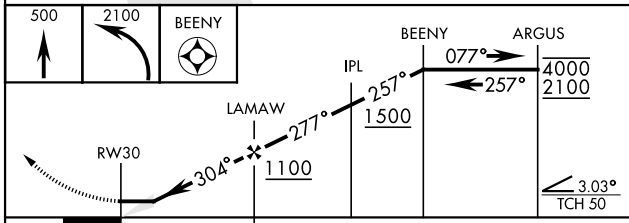
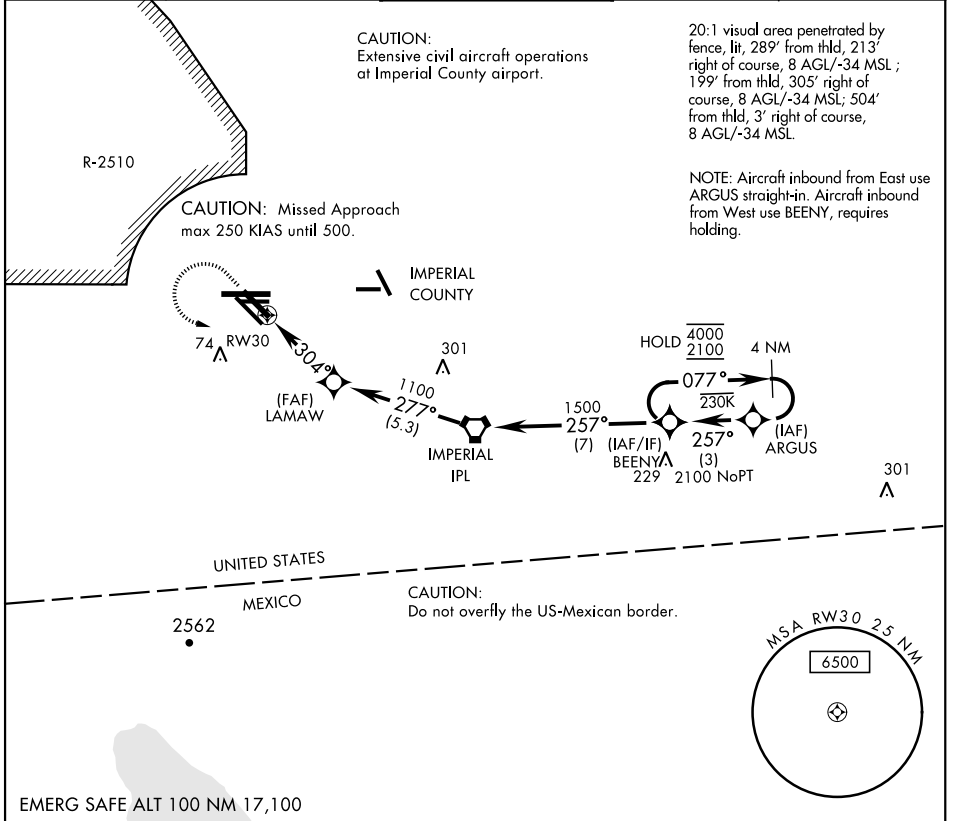
APCH CRS	Rwy ldg	6825
304°	TDZE	-42
	Arpt Elev	-42

AL-472 [USN]

EL CENTRO NAF (VRACIU FLD) (KNJK)

<p>▼ DME/DME RNP -0.3 NA. Visibility reduction by helicopters NA.</p>	<p>MISSED APPROACH: Climb to 500, then climbing left turn to 2100 direct BEENY and hold.</p>
---	--

<p>ATIS ★ 269.275</p>	<p>LOS ANGELES CENTER 128.6 291.7</p>	<p>TOWER ★ 119.1 360.2</p>	<p>GND CON 121.9 254.35</p>	<p>CLNC DEL 340.2</p>
----------------------------------	--	---------------------------------------	--	----------------------------------



CATEGORY	A	B	C	D
LNVA MDA	360-1 402 (500-1)	360-1½ 402 (500-1½)	420-1½ 462 (500-1½)	520-2 562 (600-2)
CIRCLING	420-1 462 (500-1)	420-1½ 462 (500-1½)	520-2 562 (600-2)	

HIRL Rwy 8-26, 12-30

RNAV (GPS) RWY 30

SW-3, 30 DEC 2021 to 27 JAN 2022

SW-3, 30 DEC 2021 to 27 JAN 2022